

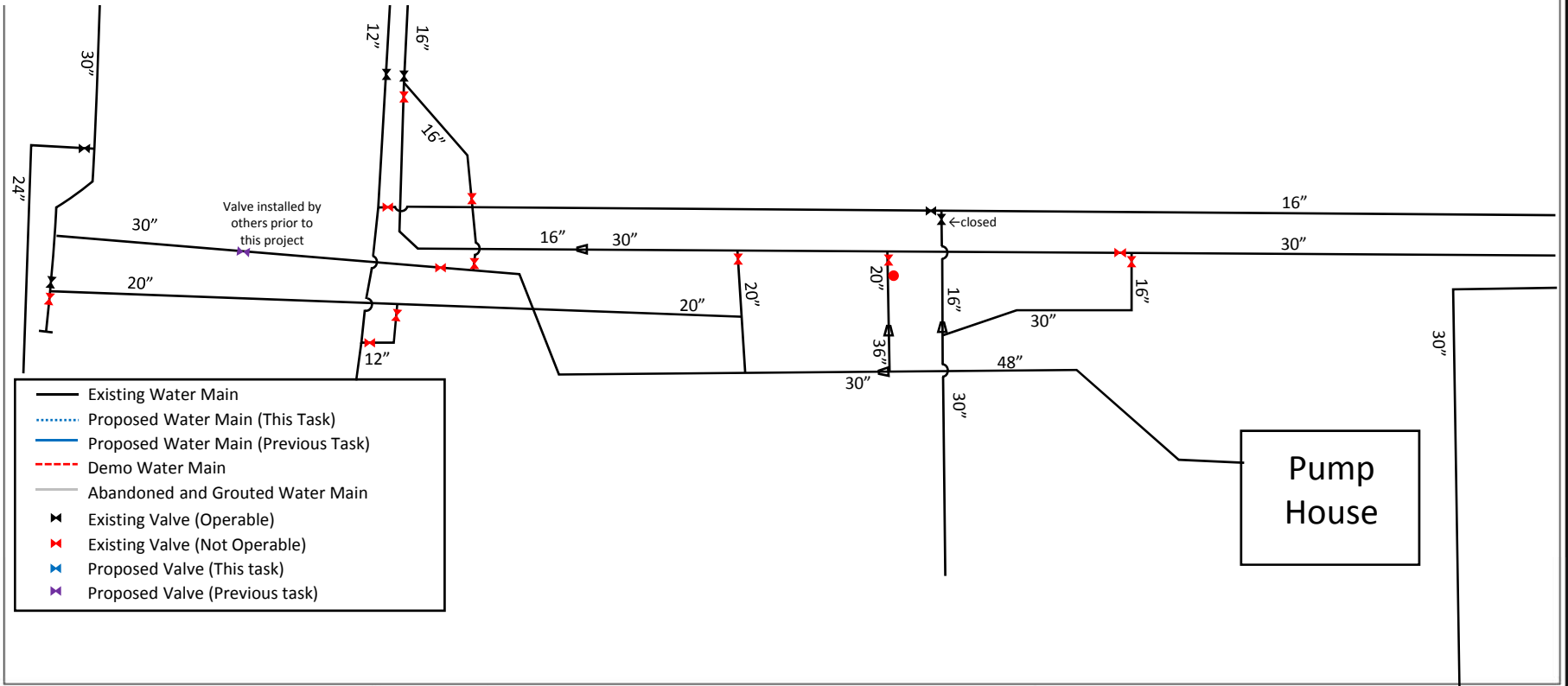
Due to seasonal demand and the significance of the Carica Pump Station, **major construction shall not take place during the months of December through April.**

The Carica pump station must be capable of uninterrupted tank filling and pumping at this time.

Remobilization may be required.

The contractor may deviate from this sequence if a construction sequence plan is submitted and approved by the Engineer and County Operations.

Existing System



Carica PS WM Improvements
Collier County, Florida



JOHNSON ENGINEERING, INC.
2122 JOHNSON STREET
P.O. BOX 1550
FORT MYERS, FLORIDA 33902-1550
PHONE (239) 334-0046
FAX (239) 334-3661
E.B. #642 & L.B. #642

Construction Sequence Specification

DATE	PROJECT NO.	REV. NO.	SCALE	SHEET
08/20/18	20149700-110	-	As Shown	EX.

Due to seasonal demand and the significance of the Carica Pump Station, **major construction shall not take place during the months of December through April.**

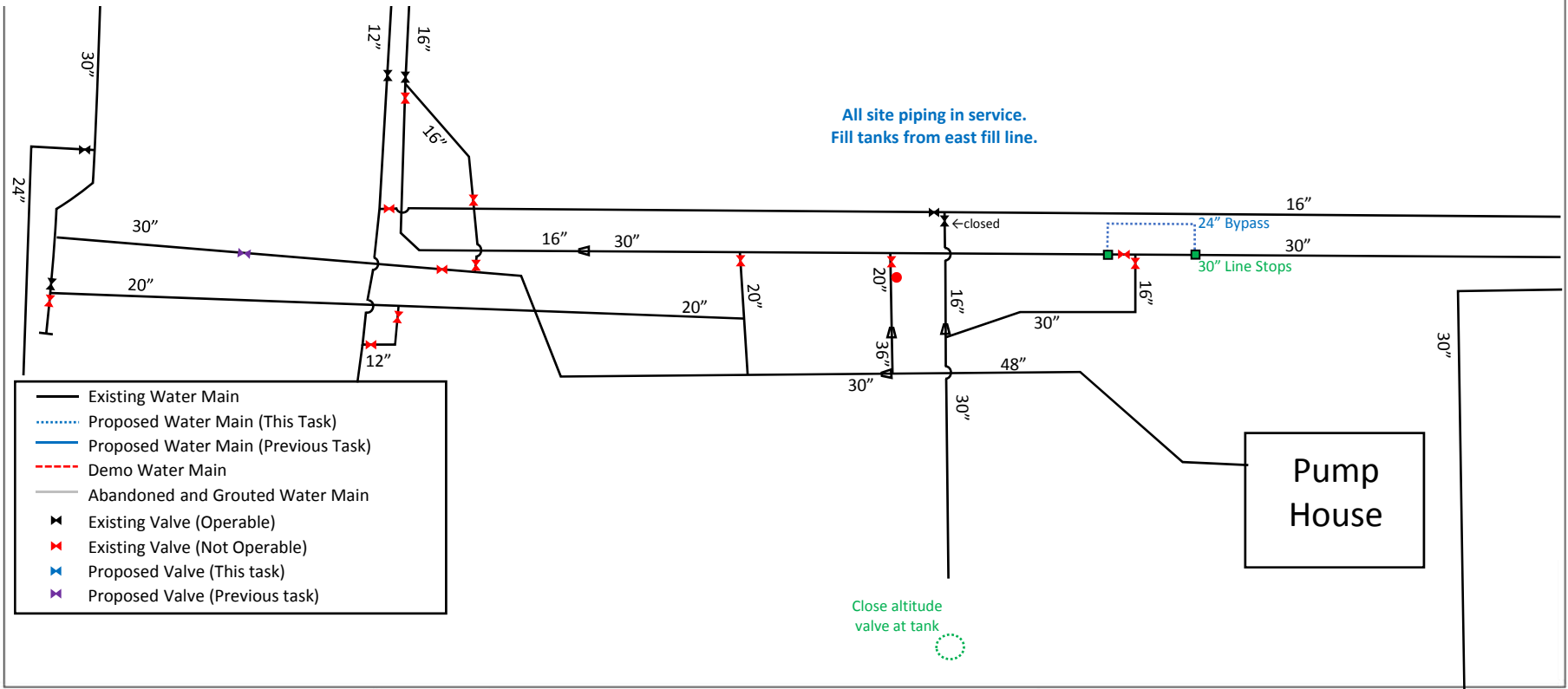
The Carica pump station must be capable of uninterrupted tank filling and pumping at this time.

Remobilization may be required.

The contractor may deviate from this sequence if a construction sequence plan is submitted and approved by the Engineer and County Operations.

Task 1 – Install 30" Valve

- a. Close altitude valve at tank
- b. Install 30" line stops w/ 24" bypass (west bypass must be on west side of ex. vault)



Carica PS WM Improvements
Collier County, Florida

JOHNSON
ENGINEERING

JOHNSON ENGINEERING, INC.
2122 JOHNSON STREET
P.O. BOX 1550
FORT MYERS, FLORIDA 33902-1550
PHONE (239) 334-0046
FAX (239) 334-3661
E.B. #842 & L.B. #642

Construction Sequence Specification

DATE 08/20/18	PROJECT NO. 20149700-110	DWG. NO. -	SCALE As Shown	SHEET 1-1
------------------	-----------------------------	---------------	-------------------	--------------

Due to seasonal demand and the significance of the Carica Pump Station, **major construction shall not take place during the months of December through April.**

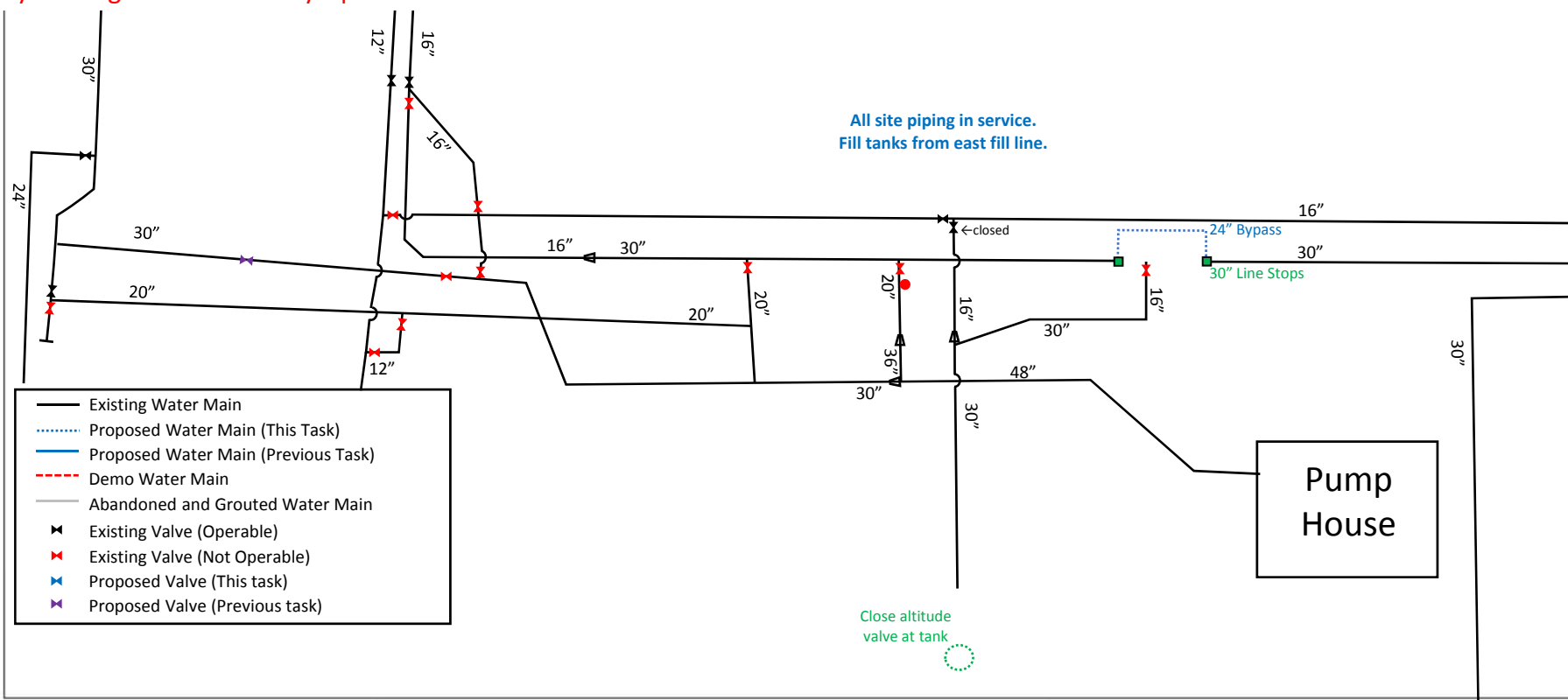
The Carica pump station must be capable of uninterrupted tank filling and pumping at this time.

Remobilization may be required.

The contractor may deviate from this sequence if a construction sequence plan is submitted and approved by the Engineer and County Operations.

Task 1 – Install 30" Valve

- a. Close altitude valve at tank
- b. Install 30" line stops w/ 24" bypass (west bypass must be on west side of ex. vault)
- c. Remove existing 30" valve and vault



Carica PS WM Improvements
Collier County, Florida

JOHNSON
ENGINEERING

JOHNSON ENGINEERING, INC.
2122 JOHNSON STREET
P.O. BOX 1550
FORT MYERS, FLORIDA 33902-1550
PHONE (239) 334-0046
FAX (239) 334-3661
E.B. #842 & L.B. #642

Construction Sequence Specification

DATE	PROJECT NO.	REV. NO.	SCALE	SHEET
08/20/18	20149700-110	-	As Shown	1-2

Due to seasonal demand and the significance of the Carica Pump Station, **major construction shall not take place during the months of December through April.**

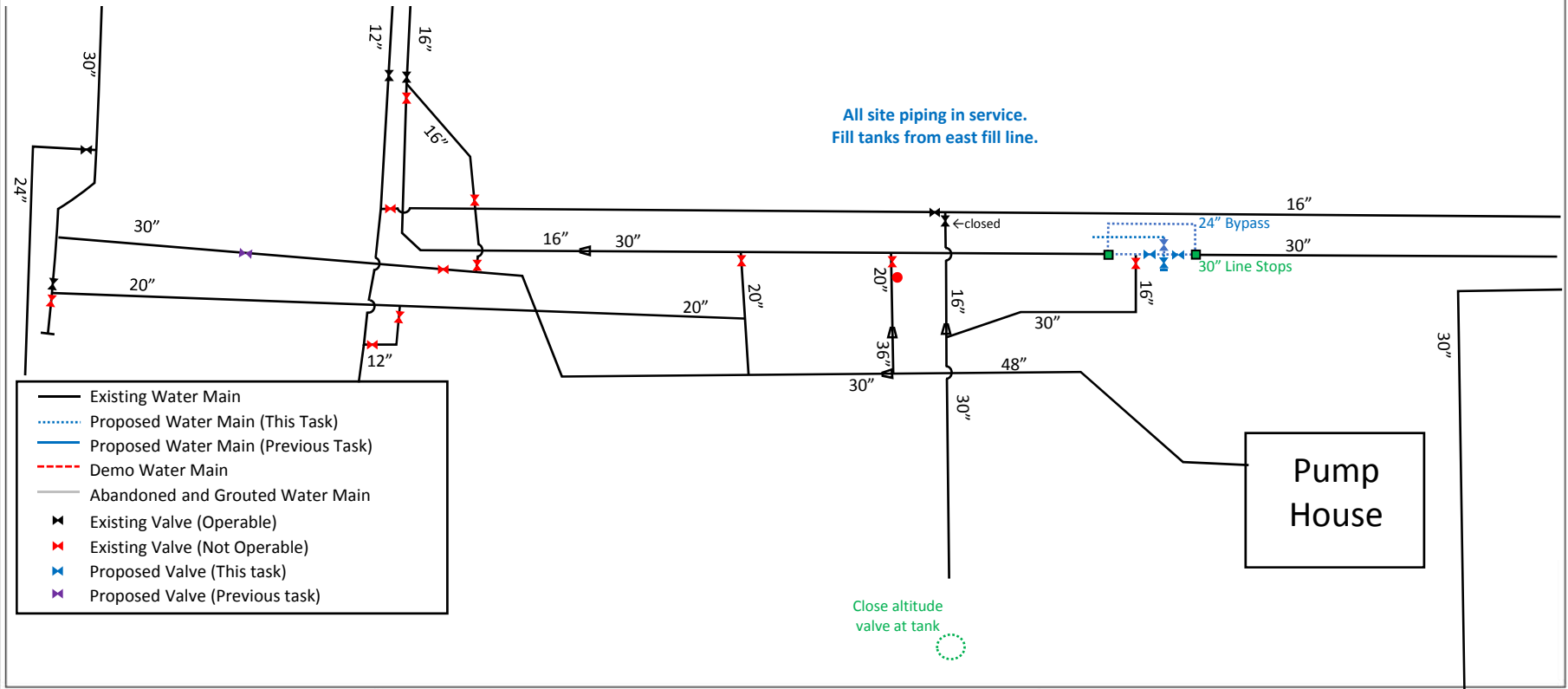
The Carica pump station must be capable of uninterrupted tank filling and pumping at this time.

Remobilization may be required.

The contractor may deviate from this sequence if a construction sequence plan is submitted and approved by the Engineer and County Operations.

Task 1 – Install 30" Valve

- Close altitude valve at tank
- Install 30" line stops w/ 24" bypass (west bypass must be on west side of ex. vault)
- Remove existing 30" valve and vault
- Cut in 30" cross, 30" valves, and 30" DIP



Carica PS WM Improvements
Collier County, Florida

JOHNSON
ENGINEERING

JOHNSON ENGINEERING, INC.
2122 JOHNSON STREET
P.O. BOX 1550
FORT MYERS, FLORIDA 33902-1550
PHONE (239) 334-0046
FAX (239) 334-3661
E.B. #842 & L.B. #642

Construction Sequence Specification

DATE	PROJECT NO.	DWG. NO.	SCALE	SHEET
08/20/18	20149700-110	-	As Shown	1-3

Due to seasonal demand and the significance of the Carica Pump Station, **major construction shall not take place during the months of December through April.**

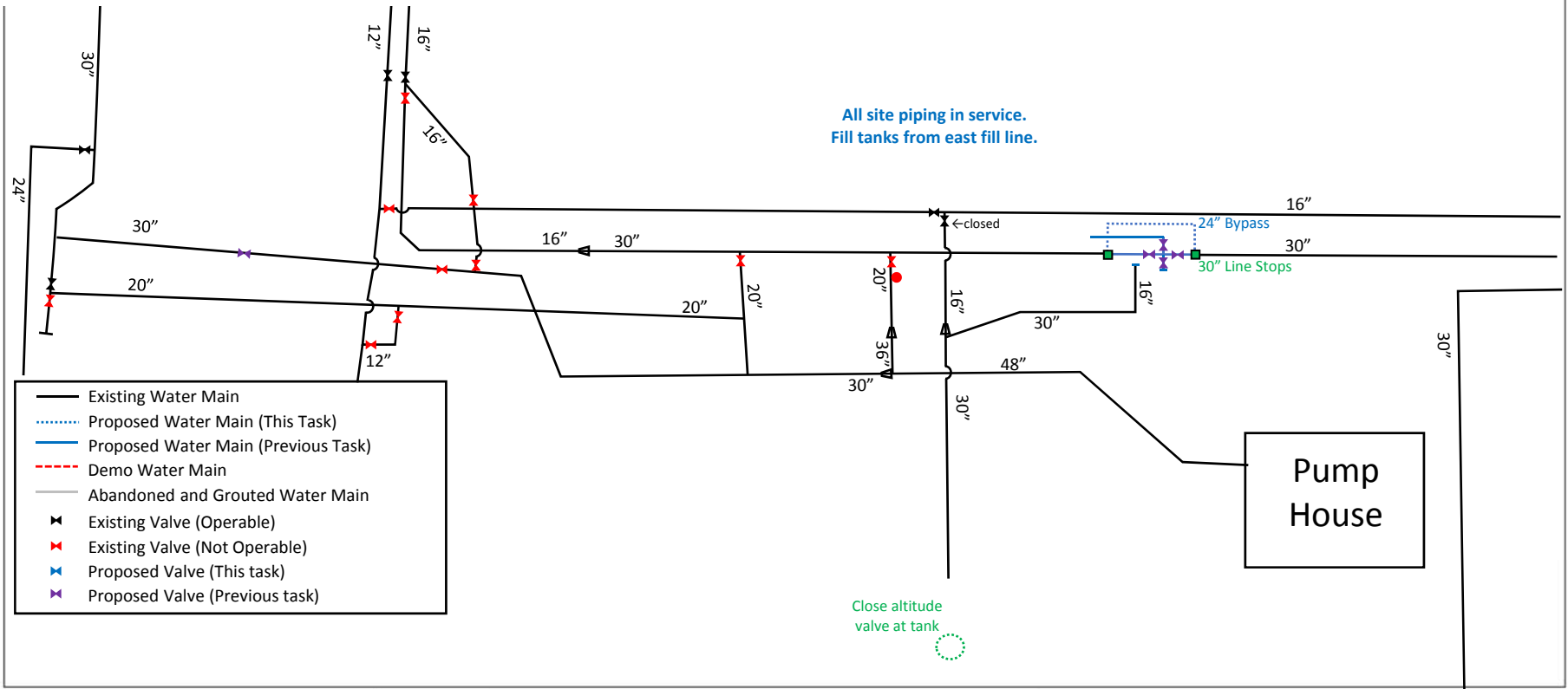
The Carica pump station must be capable of uninterrupted tank filling and pumping at this time.

Remobilization may be required.

The contractor may deviate from this sequence if a construction sequence plan is submitted and approved by the Engineer and County Operations.

Task 1 – Install 30" Valve

- Close altitude valve at tank
- Install 30" line stops w/ 24" bypass (west bypass must be on west side of ex. vault)
- Remove existing 30" valve and vault
- Cut in 30" cross, 30" valves, and 30" DIP
- Disconnect 16" fill line and cap (fill tanks with east fill line)



Carica PS WM Improvements
Collier County, Florida

JOHNSON
ENGINEERING

JOHNSON ENGINEERING, INC.
2122 JOHNSON STREET
P.O. BOX 1550
FORT MYERS, FLORIDA 33902-1550
PHONE (239) 334-0046
FAX (239) 334-3661
E.B. #842 & L.B. #642

Construction Sequence Specification

DATE	PROJECT NO.	DWG. NO.	SCALE	SHEET
08/20/18	20149700-110	-	As Shown	1-4

Due to seasonal demand and the significance of the Carica Pump Station, **major construction shall not take place during the months of December through April.**

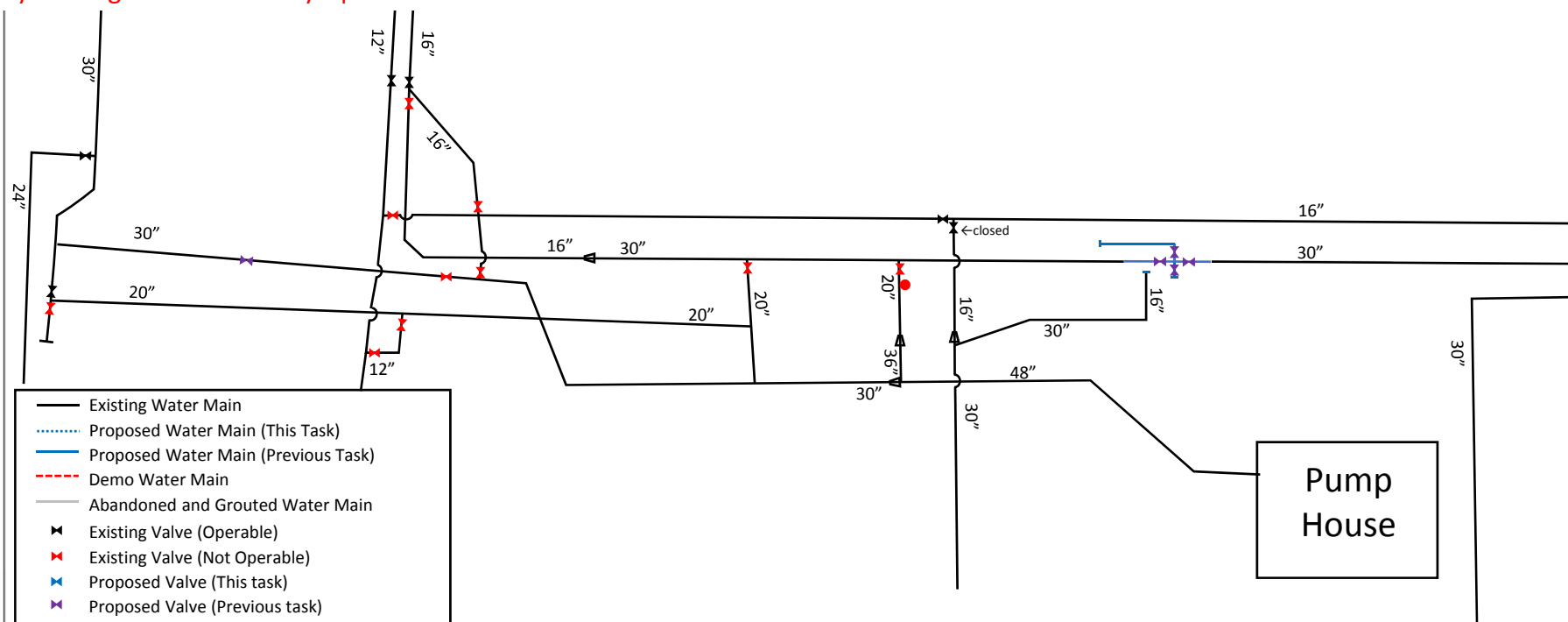
The Carica pump station must be capable of uninterrupted tank filling and pumping at this time.

Remobilization may be required.

The contractor may deviate from this sequence if a construction sequence plan is submitted and approved by the Engineer and County Operations.

Task 1 – Install 30" Valve

- a. Close altitude valve at tank
- b. Install 30" line stops w/ 24" bypass (west bypass must be on west side of ex. vault)
- c. Remove existing 30" valve and vault
- d. Cut in 30" cross, 30" valves, and 30" DIP
- e. Disconnect 16" fill line and cap (fill tanks with east fill line)
- f. Remove line stops and bypass, and open valves



Carica PS WM Improvements
Collier County, Florida

JOHNSON
ENGINEERING

JOHNSON ENGINEERING, INC.
2122 JOHNSON STREET
P.O. BOX 1550
FORT MYERS, FLORIDA 33907-1550
PHONE (239) 334-0046
FAX (239) 334-3661
E.B. #642 & L.B. #642

Construction Sequence Specification

DATE	PROJECT NO.	DWG. NO.	SCALE	SHEET
08/20/18	20149700-110	-	As Shown	1-5

Due to seasonal demand and the significance of the Carica Pump Station, **major construction shall not take place during the months of December through April.**

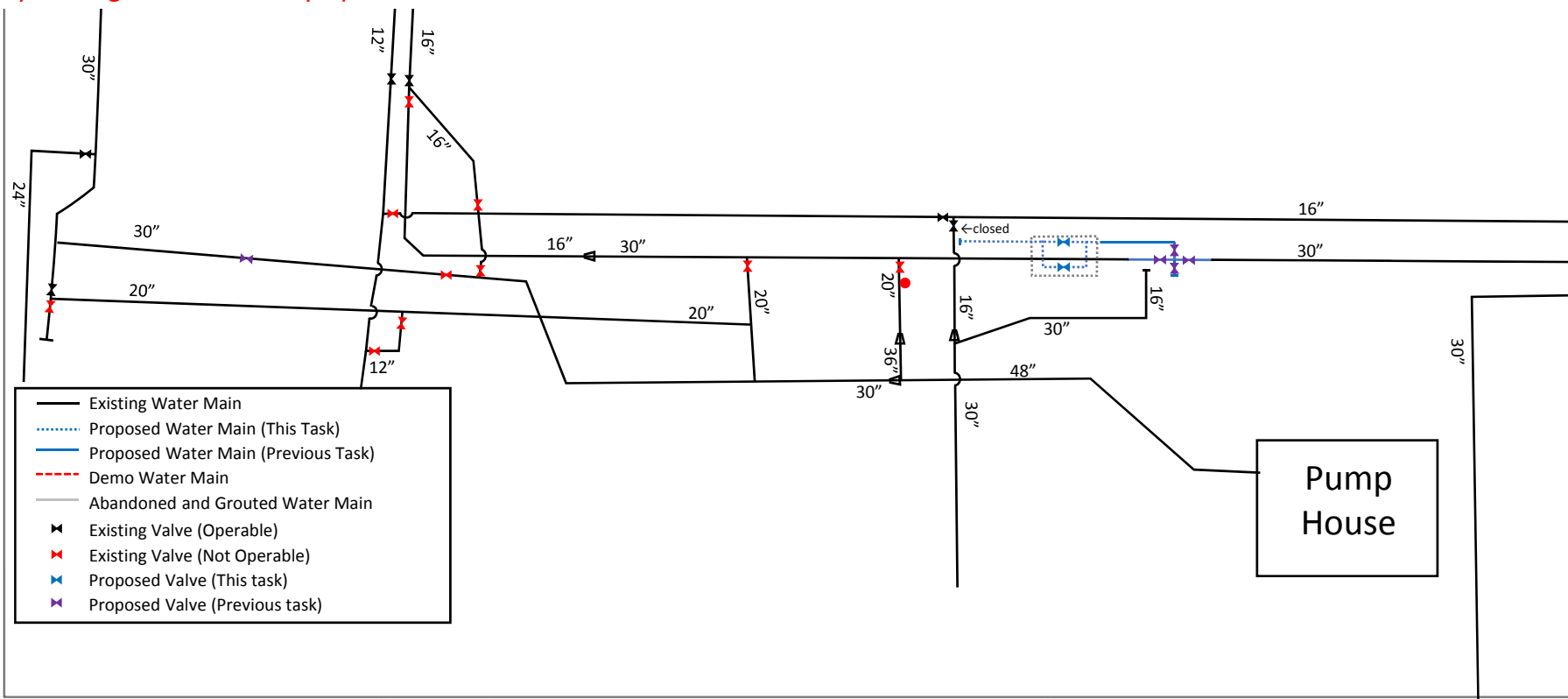
The Carica pump station must be capable of uninterrupted tank filling and pumping at this time.

Remobilization may be required.

The contractor may deviate from this sequence if a construction sequence plan is submitted and approved by the Engineer and County Operations.

Task 2 – Valve Assembly

a. Construct above ground valve assembly



Carica PS WM Improvements
Collier County, Florida

JOHNSON
ENGINEERING

JOHNSON ENGINEERING, INC.
2122 JOHNSON STREET
P.O. BOX 1550
FORT MYERS, FLORIDA 33902-1550
PHONE (239) 334-0046
FAX (239) 334-3661
E.B. #842 & L.B. #642

Construction Sequence Specification

DATE	PROJECT NO.	REV. NO.	SCALE	SHEET
08/20/18	20149700-110	-	As Shown	2-1

Due to seasonal demand and the significance of the Carica Pump Station, **major construction shall not take place during the months of December through April.**

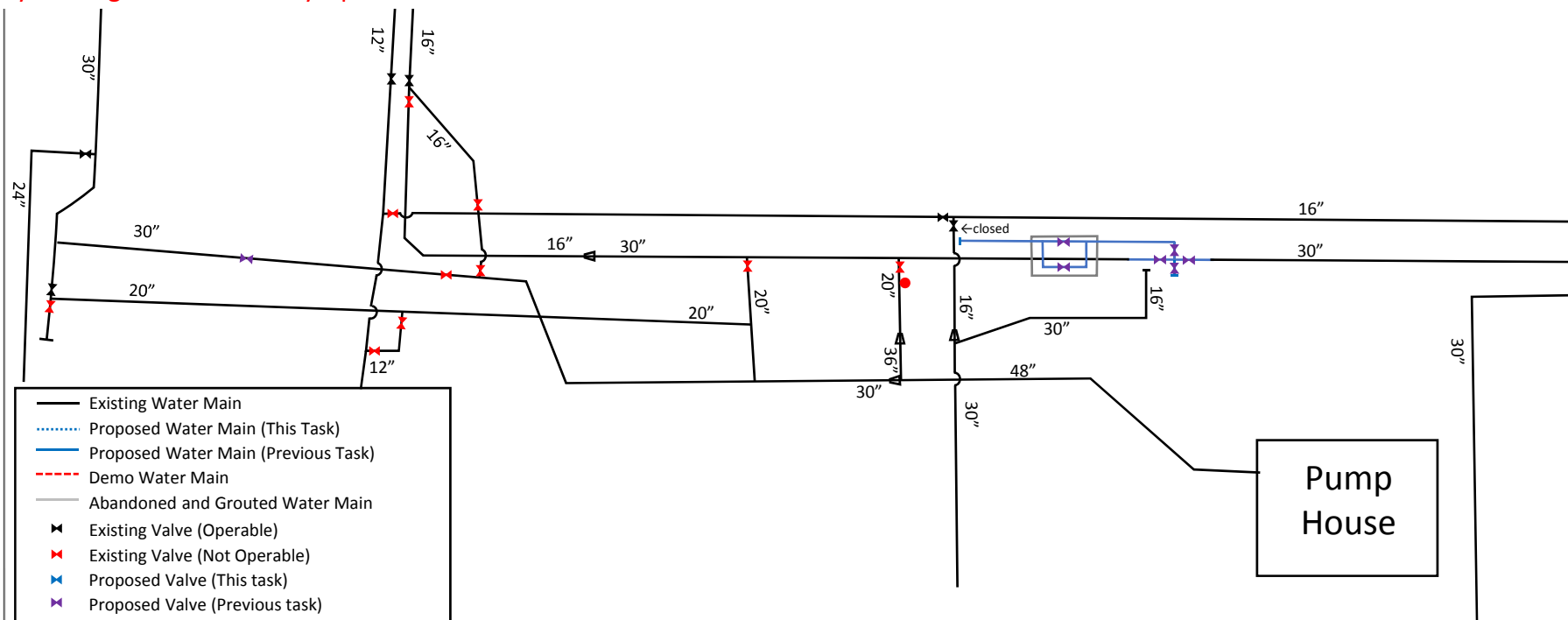
The Carica pump station must be capable of uninterrupted tank filling and pumping at this time.

Remobilization may be required.

The contractor may deviate from this sequence if a construction sequence plan is submitted and approved by the Engineer and County Operations.

Task 2 – Valve Assembly

- Construct above ground valve assembly
- Remove temporary cap and connect to 30" valve



Carica PS WM Improvements
Collier County, Florida

JOHNSON
ENGINEERING

JOHNSON ENGINEERING, INC.
2122 JOHNSON STREET
P.O. BOX 1550
FORT MYERS, FLORIDA 33902-1550
PHONE (239) 334-0046
FAX (239) 334-3661
E.B. #842 & L.B. #642

Construction Sequence Specification

DATE	PROJECT NO.	REV. NO.	SCALE	SHEET
08/20/18	20149700-110	-	As Shown	2-2

Due to seasonal demand and the significance of the Carica Pump Station, **major construction shall not take place during the months of December through April.**

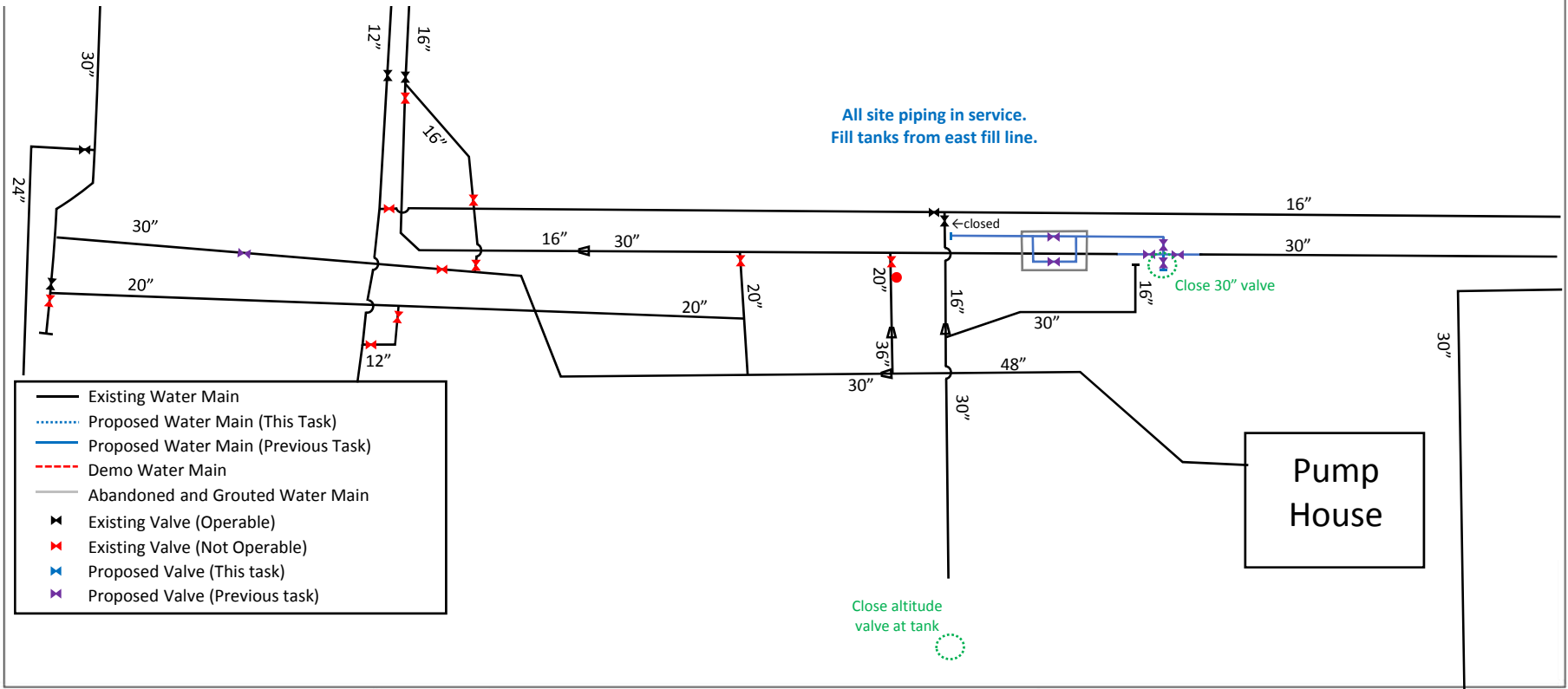
The Carica pump station must be capable of uninterrupted tank filling and pumping at this time.

Remobilization may be required.

The contractor may deviate from this sequence if a construction sequence plan is submitted and approved by the Engineer and County Operations.

Task 3 – Replace and Connect Fill Line

- a. Close altitude valve at tank and 30" valve south of cross



Carica PS WM Improvements
Collier County, Florida

JOHNSON
ENGINEERING

JOHNSON ENGINEERING, INC.
2122 JOHNSON STREET
P.O. BOX 1550
FORT MYERS, FLORIDA 33902-1550
PHONE (239) 334-0046
FAX (239) 334-3661
E.B. #842 & L.B. #642

Construction Sequence Specification

DATE	PROJECT NO.	DWG. NO.	SCALE	SHEET
08/20/18	20149700-110	-	As Shown	3-1

Due to seasonal demand and the significance of the Carica Pump Station, **major construction shall not take place during the months of December through April.**

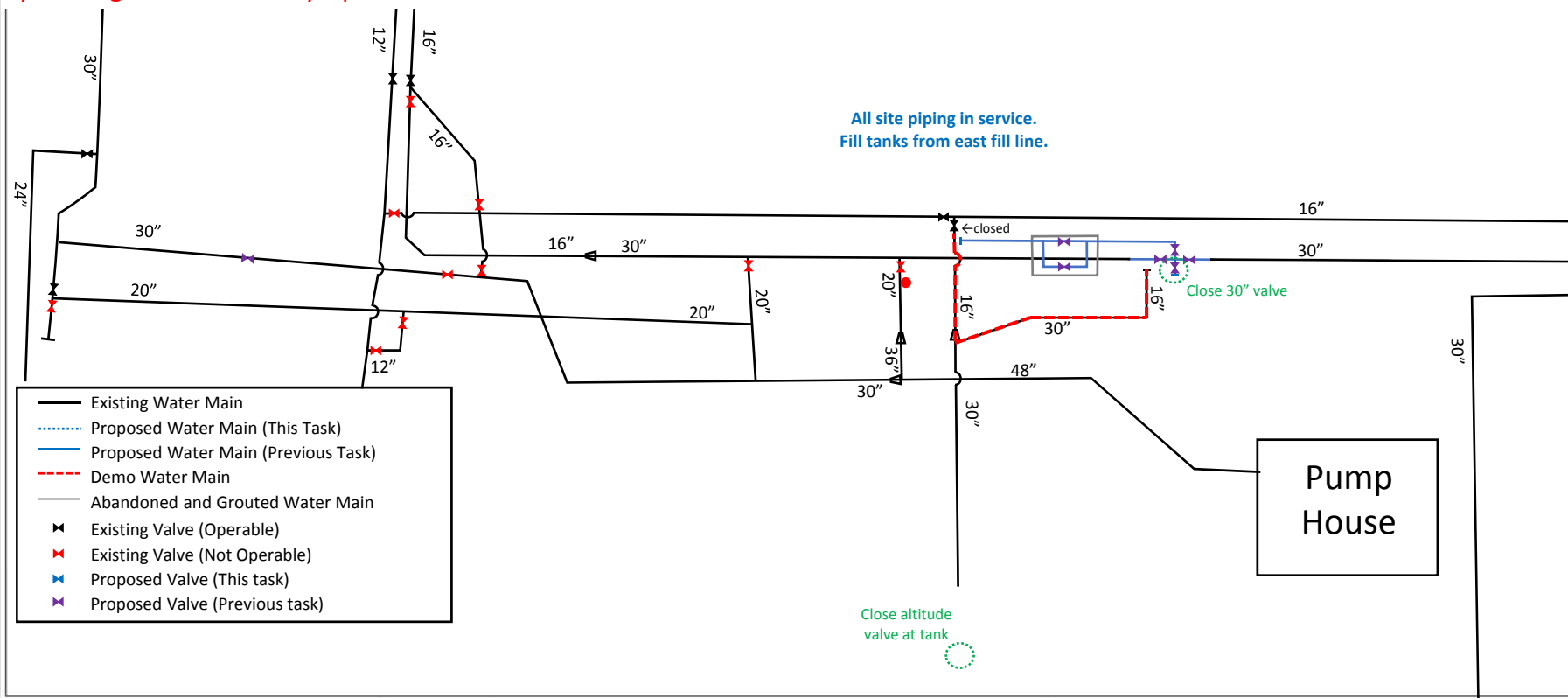
The Carica pump station must be capable of uninterrupted tank filling and pumping at this time.

Remobilization may be required.

The contractor may deviate from this sequence if a construction sequence plan is submitted and approved by the Engineer and County Operations.

Task 3 – Replace and Connect Fill Line

- Close altitude valve at tank and 30" valve south of cross
- Demo existing fill lines



Carica PS WM Improvements
Collier County, Florida

JOHNSON
ENGINEERING

JOHNSON ENGINEERING, INC.
2122 JOHNSON STREET
P.O. BOX 1550
FORT MYERS, FLORIDA 33902-1550
PHONE (239) 334-0046
FAX (239) 334-3661
E.B. #842 & L.B. #642

Construction Sequence Specification

DATE	PROJECT NO.	FILE NO.	SCALE	SHEET
08/20/18	20149700-110	-	As Shown	3-2

Due to seasonal demand and the significance of the Carica Pump Station, **major construction shall not take place during the months of December through April.**

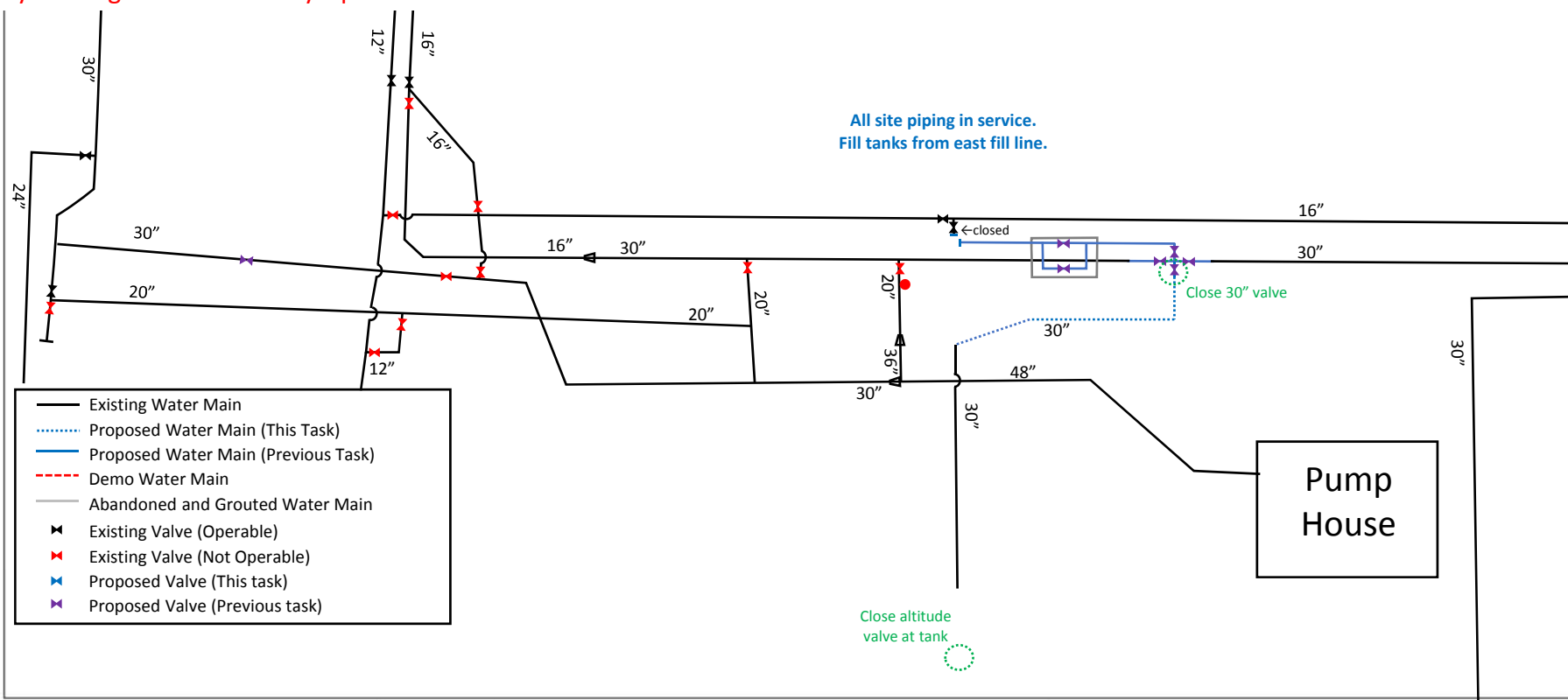
The Carica pump station must be capable of uninterrupted tank filling and pumping at this time.

Remobilization may be required.

The contractor may deviate from this sequence if a construction sequence plan is submitted and approved by the Engineer and County Operations.

Task 3 – Replace and Connect Fill Line

- Close altitude valve at tank and 30" valve south of cross
- Demo existing fill lines
- Install 30" fill line, remove cap, reconnect 30" fill line, cap 16" WM



Carica PS WM Improvements
Collier County, Florida

JOHNSON
ENGINEERING

JOHNSON ENGINEERING, INC.
2122 JOHNSON STREET
P.O. BOX 1550
FORT MYERS, FLORIDA 33902-1550
PHONE (239) 334-0046
FAX (239) 334-3661
E.B. #842 & L.B. #642

Construction Sequence Specification

DATE	PROJECT NO.	PIF NO.	SCALE	SHEET
08/20/18	20149700-110	-	As Shown	3-3

Due to seasonal demand and the significance of the Carica Pump Station, **major construction shall not take place during the months of December through April.**

The Carica pump station must be capable of uninterrupted tank filling and pumping at this time.

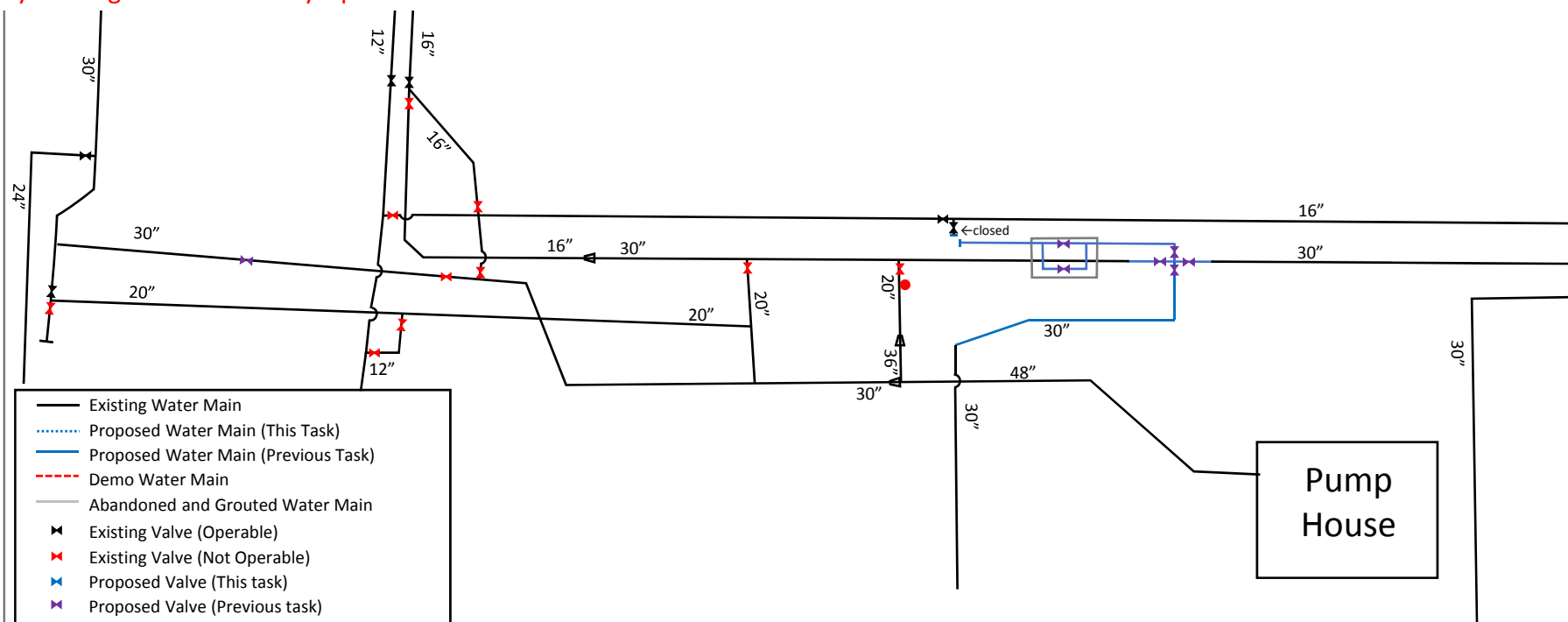
Remobilization may be required.

Task 3 – Replace and Connect Fill Line

- Close altitude valve at tank
- Demo existing fill lines
- Install 30" fill line, remove cap, reconnect 30" fill line, cap 16" WM
- Open altitude valve and 30" valve south of cross



The contractor may deviate from this sequence if a construction sequence plan is submitted and approved by the Engineer and County Operations.



Carica PS WM Improvements
Collier County, Florida

JOHNSON
ENGINEERING

JOHNSON ENGINEERING, INC.
2122 JOHNSON STREET
P.O. BOX 1550
FORT MYERS, FLORIDA 33902-1550
PHONE (239) 334-0046
FAX (239) 334-3661
E.B. #642 & L.B. #642

Construction Sequence Specification

DATE	PROJECT NO.	FILE NO.	SCALE	SHEET
08/20/18	20149700-110	-	As Shown	3-4

Due to seasonal demand and the significance of the Carica Pump Station, **major construction shall not take place during the months of December through April.**

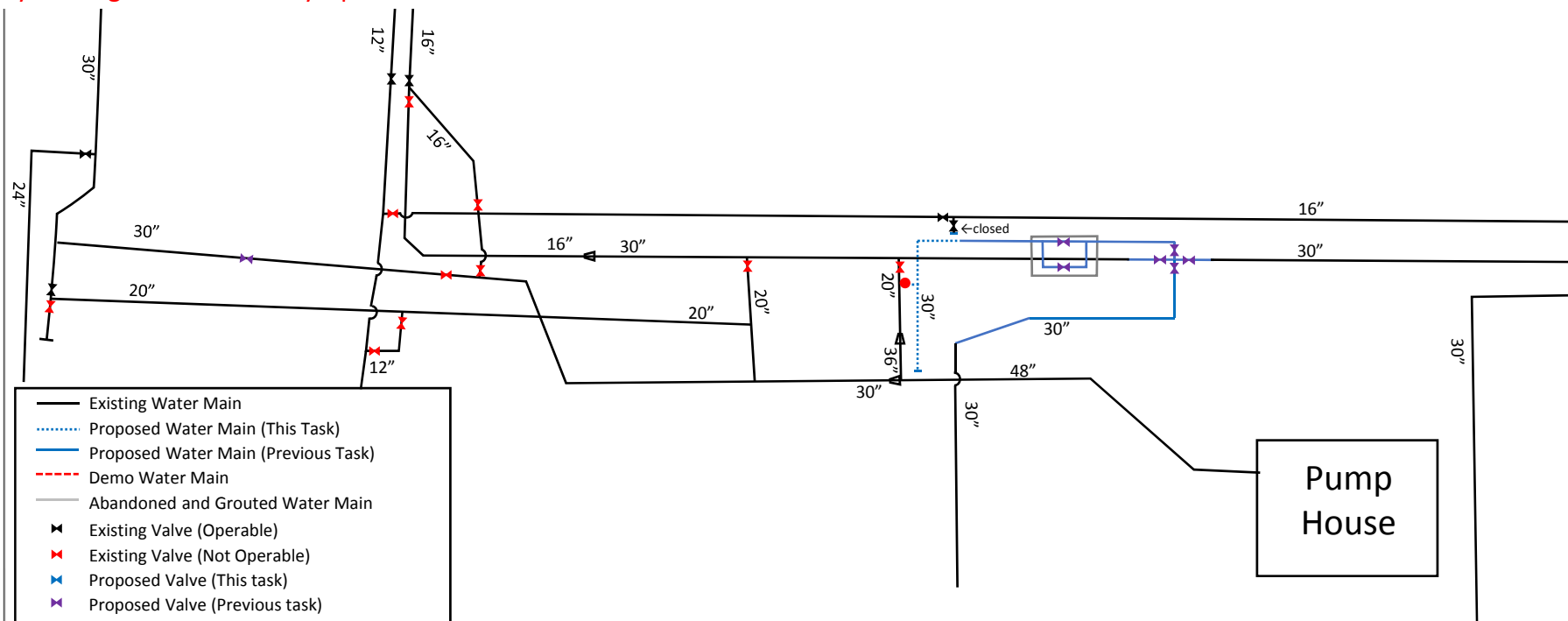
The Carica pump station must be capable of uninterrupted tank filling and pumping at this time.

Remobilization may be required.

The contractor may deviate from this sequence if a construction sequence plan is submitted and approved by the Engineer and County Operations.

Task 4 – Install 30” Water Main

- Install 30” WM
- Reconnect hydrant (must be in service)



Carica PS WM Improvements
Collier County, Florida



JOHNSON ENGINEERING, INC.
2122 JOHNSON STREET
P.O. BOX 1550
FORT MYERS, FLORIDA 33902-1550
PHONE (239) 334-0046
FAX (239) 334-3661
E.B. #642 & L.B. #642

Construction Sequence Specification

DATE	PROJECT NO.	PIF NO.	SCALE	SHEET
08/20/18	20149700-110	-	As Shown	4-1

Due to seasonal demand and the significance of the Carica Pump Station, **major construction shall not take place during the months of December through April.**

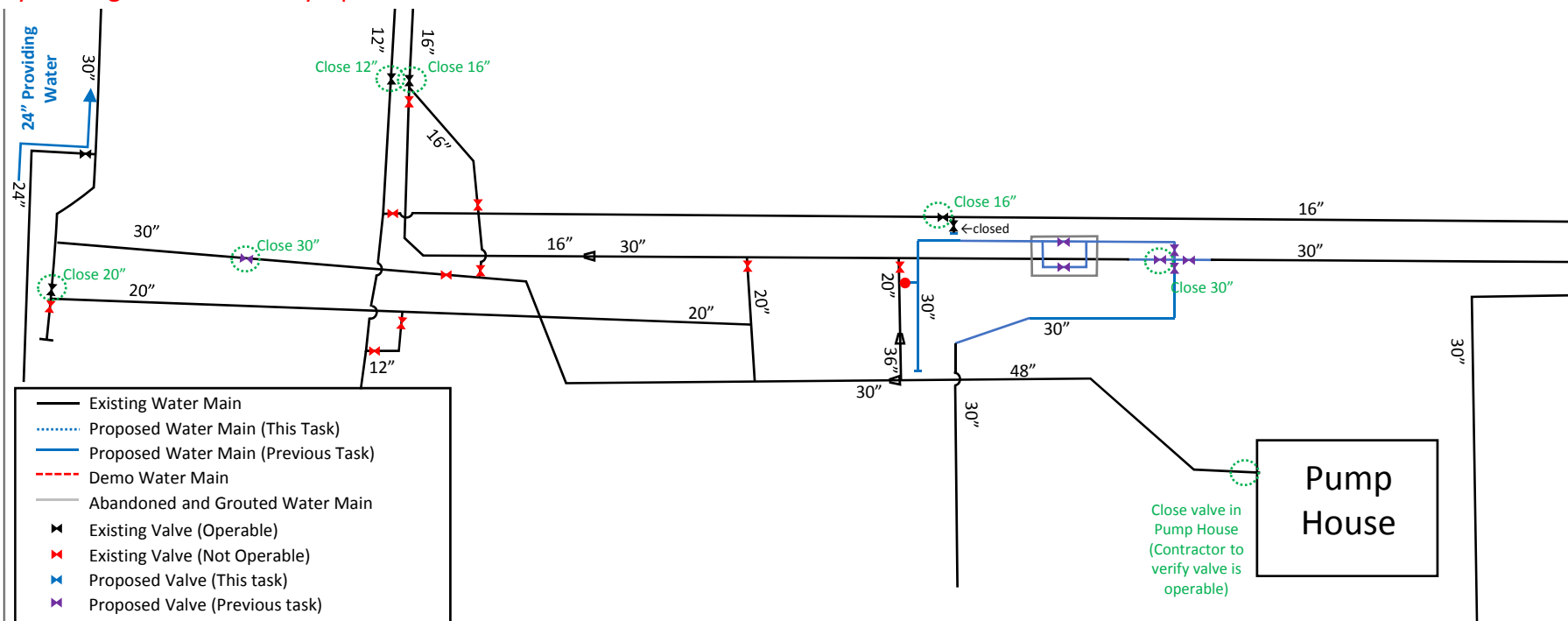
The Carica pump station must be capable of uninterrupted tank filling and pumping at this time.

Remobilization may be required.

The contractor may deviate from this sequence if a construction sequence plan is submitted and approved by the Engineer and County Operations.

Task 4 – Install 30” Water Main

- Install 30” WM
- Reconnect hydrant (must be in service)
- Close 20” valve in median, new 30” valve, valve in pump house, 16” valve to north, 12” valve to north, 16” valve, 30” valve at entrance (24” WM in median providing water)



Carica PS WM Improvements
Collier County, Florida

JOHNSON
ENGINEERING

JOHNSON ENGINEERING, INC.
2122 JOHNSON STREET
P.O. BOX 1550
FORT MYERS, FLORIDA 33902-1550
PHONE: (239) 334-0046
FAX: (239) 334-3661
E.B. #642 & L.B. #642

Construction Sequence Specification

DATE	PROJECT NO.	REV. NO.	SCALE	SHEET
08/20/18	20149700-110	-	As Shown	4-2

Due to seasonal demand and the significance of the Carica Pump Station, **major construction shall not take place during the months of December through April.**

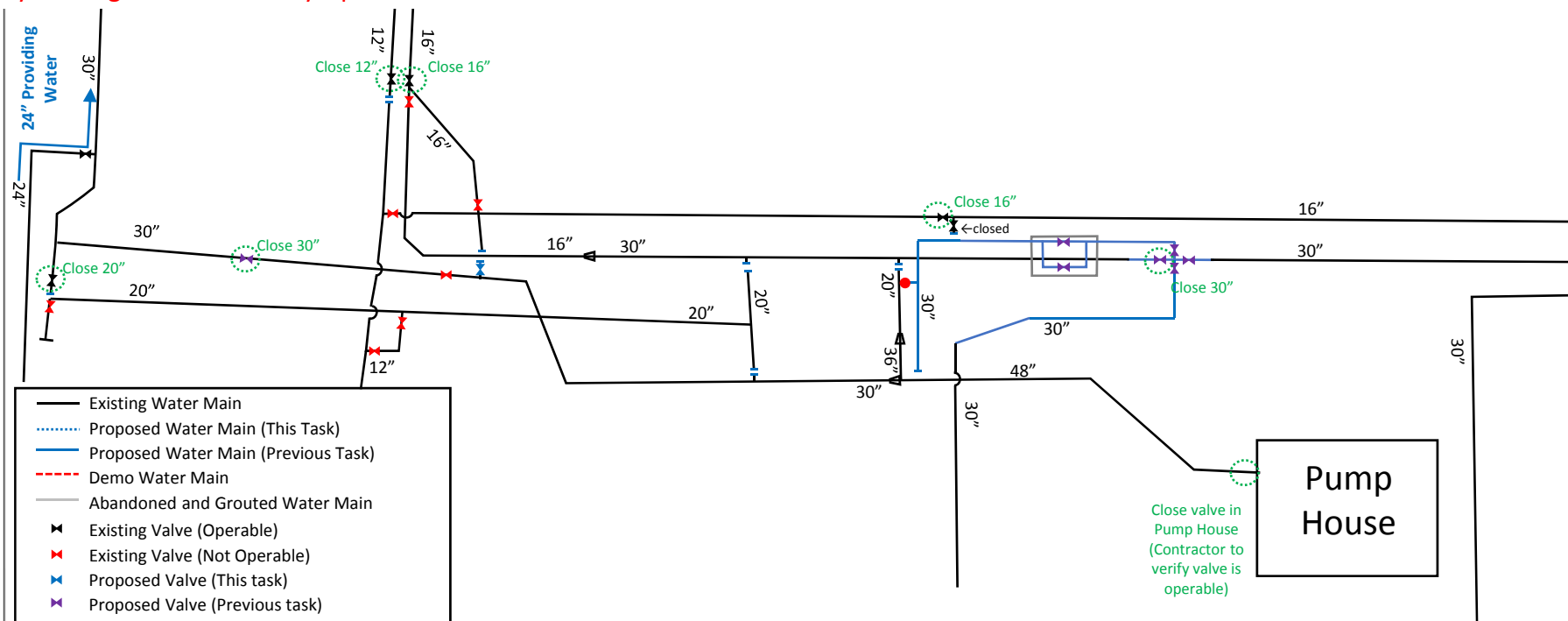
The Carica pump station must be capable of uninterrupted tank filling and pumping at this time.

Remobilization may be required.

The contractor may deviate from this sequence if a construction sequence plan is submitted and approved by the Engineer and County Operations.

Task 4 – Install 30” Water Main

- Install 30” WM
- Reconnect hydrant (must be in service)
- Close 20” valve in median, new 30” valve, valve in pump house, 16” valve to north, 12” valve to north, 16” valve, 30” valve at entrance (24” WM in median providing water)
- Disconnect and cap 20” WM (x4), 16” WM with 16” valve, and 12” WM



Carica PS WM Improvements
Collier County, Florida

JOHNSON
ENGINEERING

JOHNSON ENGINEERING, INC.
2122 JOHNSON STREET
P.O. BOX 1550
FORT MYERS, FLORIDA 33907-1550
PHONE (239) 334-0046
FAX (239) 334-3661
E.B. #642 & L.B. #642

Construction Sequence Specification

DATE	PROJECT NO.	REV. NO.	SCALE	SHEET
08/20/18	20149700-110	-	As Shown	4-3

Due to seasonal demand and the significance of the Carica Pump Station, **major construction shall not take place during the months of December through April.**

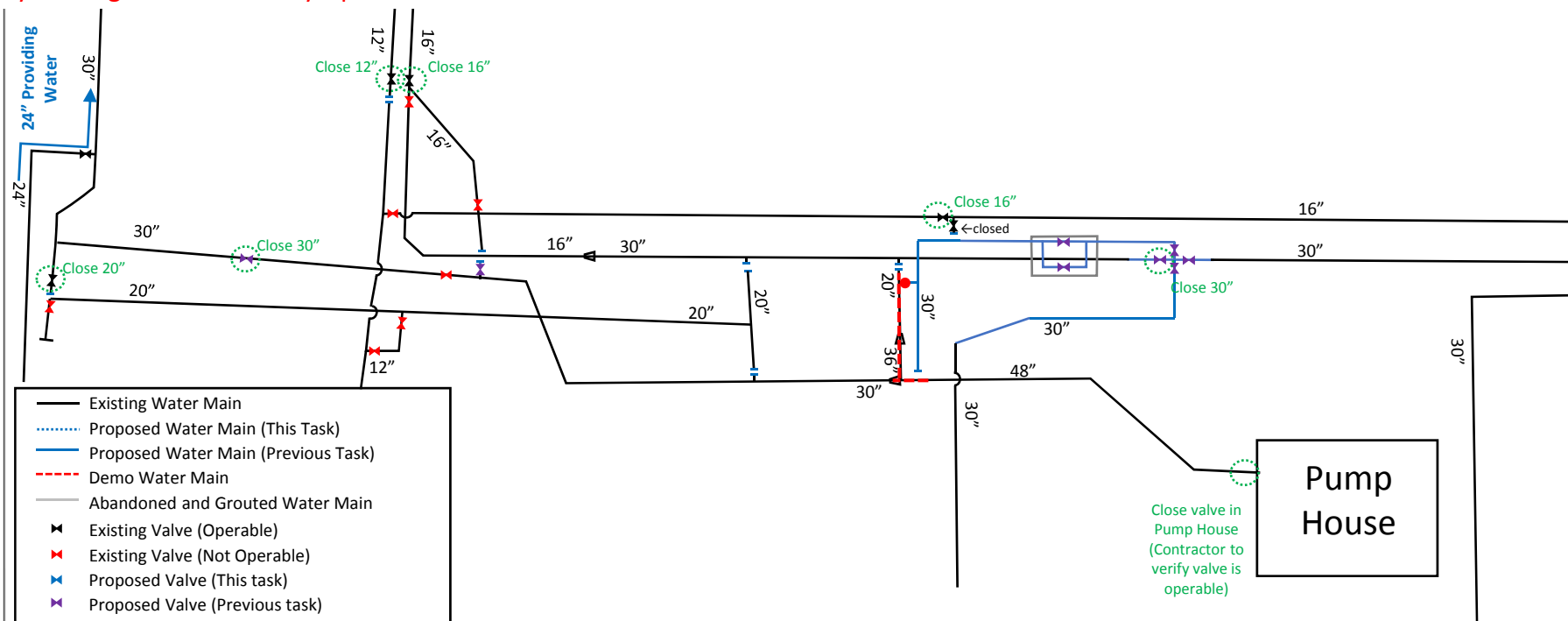
The Carica pump station must be capable of uninterrupted tank filling and pumping at this time.

Remobilization may be required.

The contractor may deviate from this sequence if a construction sequence plan is submitted and approved by the Engineer and County Operations.

Task 4 – Install 30” Water Main

- Install 30” WM
- Reconnect hydrant (must be in service)
- Close 20” valve in median, new 30” valve, valve in pump house, 16” valve to north, 12” valve to north, 16” valve, 30” valve at entrance (24” WM in median providing water)
- Disconnect and cap 20” WM (x4), 16” WM with 16” valve, and 12” WM
- Demo 20”/36” WM, 48” Tee



Carica PS WM Improvements
Collier County, Florida

JOHNSON
ENGINEERING

JOHNSON ENGINEERING, INC.
2122 JOHNSON STREET
P.O. BOX 1550
FORT MYERS, FLORIDA 33907-1550
PHONE (239) 334-0046
FAX (239) 334-3661
E.B. #842 & L.B. #642

Construction Sequence Specification

DATE	PROJECT NO.	DWG. NO.	SCALE	SHEET
08/20/18	20149700-110	-	As Shown	4-4

Due to seasonal demand and the significance of the Carica Pump Station, **major construction shall not take place during the months of December through April.**

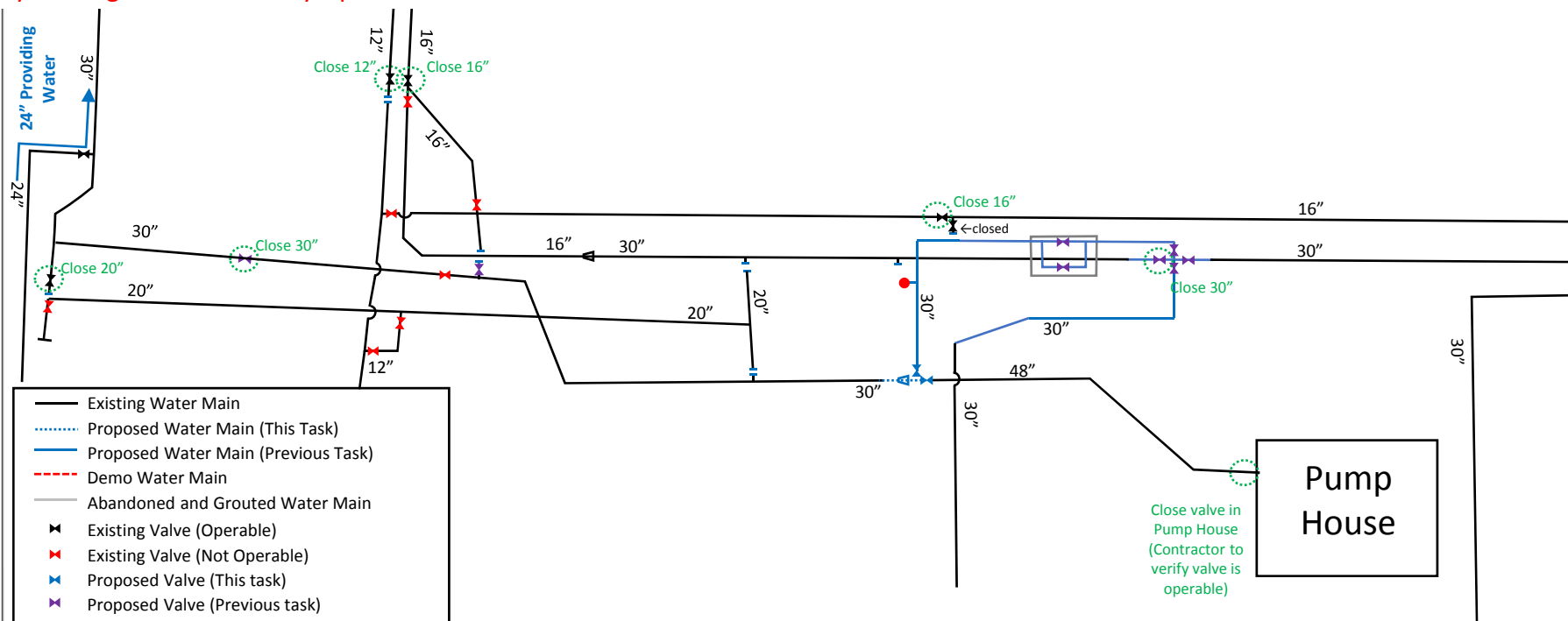
The Carica pump station must be capable of uninterrupted tank filling and pumping at this time.

Remobilization may be required.

The contractor may deviate from this sequence if a construction sequence plan is submitted and approved by the Engineer and County Operations.

Task 4 – Install 30” Water Main

- Install 30” WM
- Reconnect hydrant (must be in service)
- Close 20” valve in median, new 30” valve, valve in pump house, 16” valve to north, 12” valve to north, 16” valve, 30” valve at entrance (24” WM in median providing water)
- Disconnect and cap 20” WM (x4), 16” WM with 16” valve, and 12” WM
- Demo 20”/36” WM, 48” Tee
- Cut in 48”x30” Tee, 30” valve, 48” valve, 48”x30” reducer, and 30” DIP WM



Due to seasonal demand and the significance of the Carica Pump Station, **major construction shall not take place during the months of December through April.**

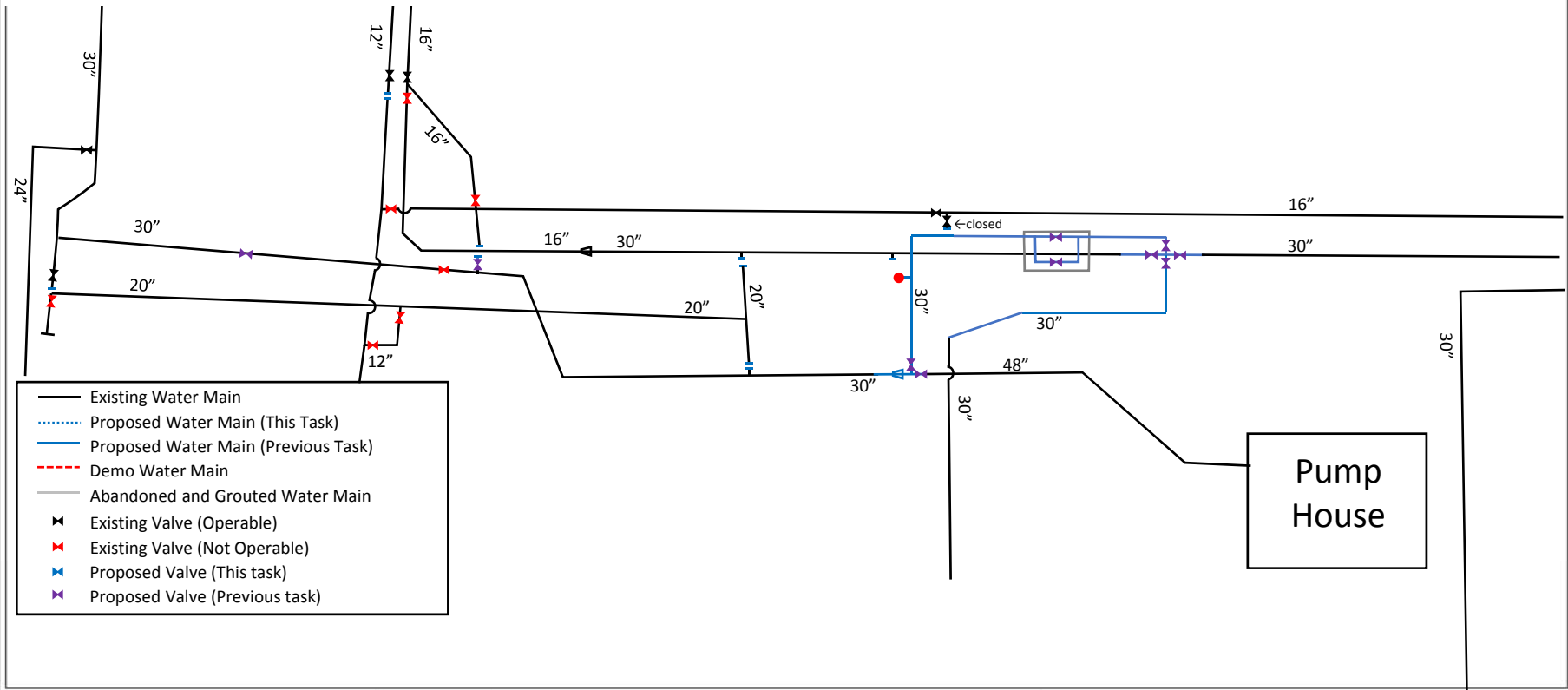
The Carica pump station must be capable of uninterrupted tank filling and pumping at this time. Remobilization may be required.

The contractor may deviate from this sequence if a construction sequence plan is submitted and approved by the Engineer and County Operations.

Task 4 – Install 30” Water Main



- a. Install 30” WM
- b. Reconnect hydrant (must be in service)
- c. Close 20” valve in median, new 30” valve, valve in pump house, 16” valve to north, 12” valve to north, 16” valve, 30” valve at entrance (24” WM in median providing water)
- d. Disconnect and cap 20” WM (x4), 16” WM with 16” valve, and 12” WM
- e. Demo 20”/36” WM, 48” Tee
- f. Cut in 48”x30” Tee, 30” valve, 48” valve, 48”x30” reducer, and 30” DIP WM
- g. Open valves



Carica PS WM Improvements
Collier County, Florida



JOHNSON ENGINEERING, INC.
2122 JOHNSON STREET
P.O. BOX 1550
FORT MYERS, FLORIDA 33907-1550
PHONE (239) 334-0046
FAX (239) 334-3661
E.B. #842 & L.B. #642

Construction Sequence Specification

DATE	PROJECT NO.	REV. NO.	SCALE	SHEET
08/20/18	20149700-110	-	As Shown	4-6

Due to seasonal demand and the significance of the Carica Pump Station, **major construction shall not take place during the months of December through April.**

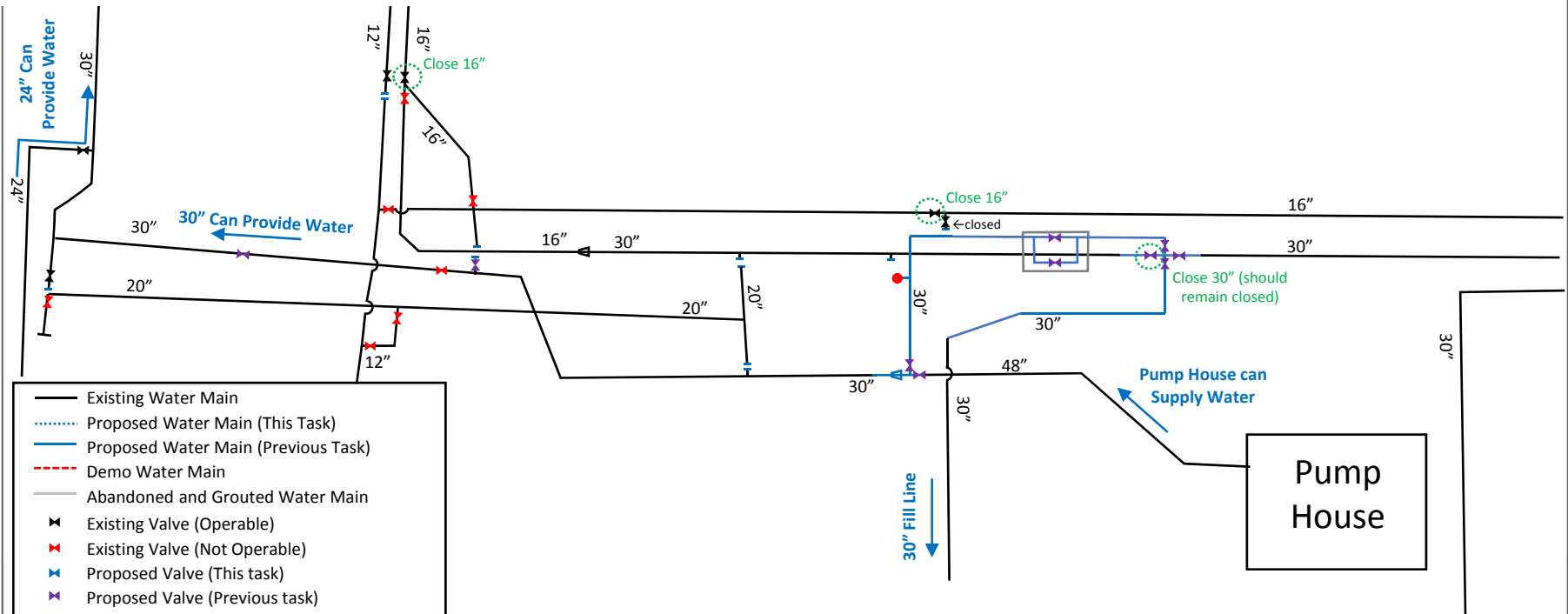
The Carica pump station must be capable of uninterrupted tank filling and pumping at this time.

Remobilization may be required.

The contractor may deviate from this sequence if a construction sequence plan is submitted and approved by the Engineer and County Operations.

Task 5 – Decommission 30" PCCP WM

- a. Close new 30" valve, 16" valve to north, 16" valve



Carica PS WM Improvements
Collier County, Florida



JOHNSON ENGINEERING, INC.
2122 JOHNSON STREET
P.O. BOX 1550
FORT MYERS, FLORIDA 33902-1550
PHONE (239) 334-0046
FAX (239) 334-3661
E.B. #842 & L.B. #642

Construction Sequence Specification

DATE	PROJECT NO.	PIF NO.	SCALE	SHEET
08/20/18	20149700-110	-	As Shown	5-1

Due to seasonal demand and the significance of the Carica Pump Station, **major construction shall not take place during the months of December through April.**

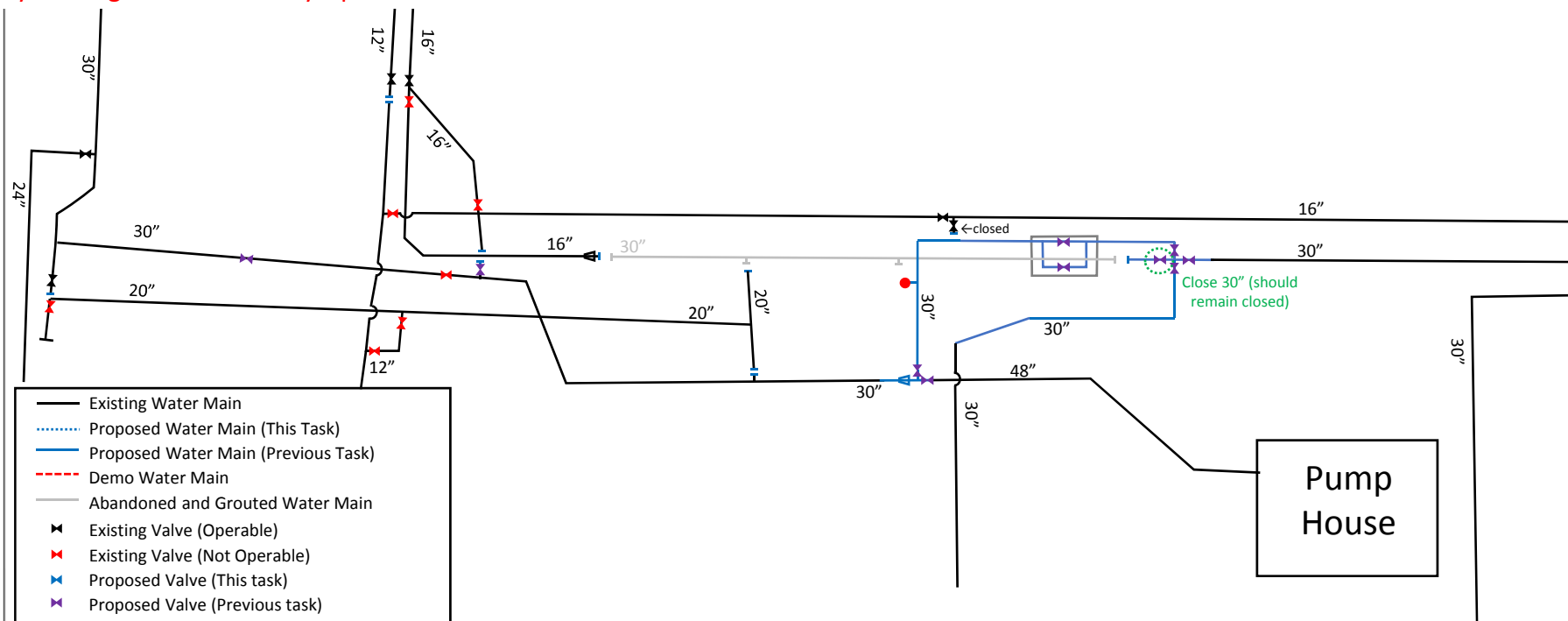
The Carica pump station must be capable of uninterrupted tank filling and pumping at this time.

Remobilization may be required.

The contractor may deviate from this sequence if a construction sequence plan is submitted and approved by the Engineer and County Operations.

Task 5 – Decommission 30” PCCP WM

- Close new 30” valve, 16” valve to north, 16” valve
- Disconnect 30”, abandon and grout 30” PCCP WM, cap
- Open Valves, new 30” valve to remain closed.



Carica PS WM Improvements
Collier County, Florida

JOHNSON
ENGINEERING

JOHNSON ENGINEERING, INC.
2122 JOHNSON STREET
P.O. BOX 1550
FORT MYERS, FLORIDA 33902-1550
PHONE (239) 334-0046
FAX (239) 334-3661
E.B. #642 & L.B. #642

Construction Sequence Specification

DATE	PROJECT NO.	REV. NO.	SCALE	SHEET
08/20/18	20149700-110	-	As Shown	5-3

Due to seasonal demand and the significance of the Carica Pump Station, **major construction shall not take place during the months of December through April.**

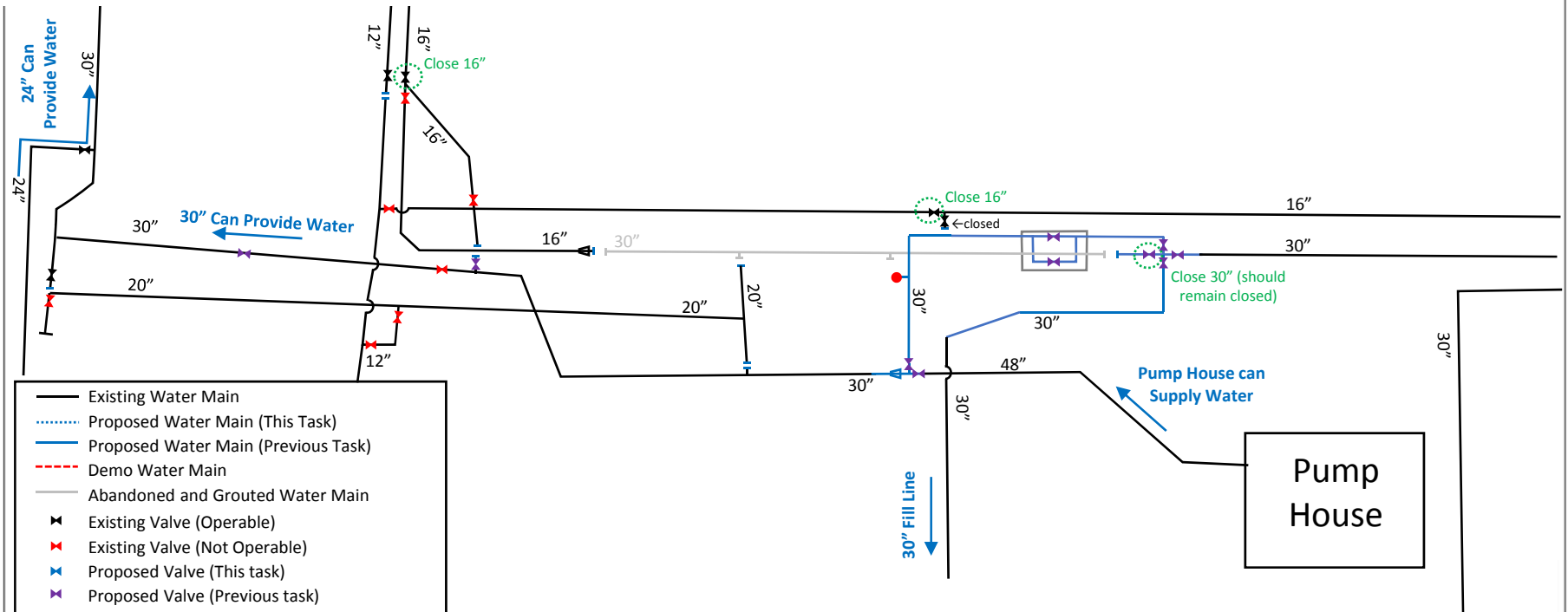
The Carica pump station must be capable of uninterrupted tank filling and pumping at this time.

Remobilization may be required.

The contractor may deviate from this sequence if a construction sequence plan is submitted and approved by the Engineer and County Operations.

Task 6 – Clean-up Site Piping

- a. Close new 30" valve, 16" valve to north, 16" valve



Carica PS WM Improvements
Collier County, Florida

JOHNSON
ENGINEERING

JOHNSON ENGINEERING, INC.
2122 JOHNSON STREET
P.O. BOX 1550
FORT MYERS, FLORIDA 33902-1550
PHONE (239) 334-0046
FAX (239) 334-3661
E.B. #842 & L.B. #642

Construction Sequence Specification

DATE 08/20/18	PROJECT NO. 20149700-110	PIF NO. -	SCALE As Shown	SHEET 6-1
------------------	-----------------------------	--------------	-------------------	--------------

Due to seasonal demand and the significance of the Carica Pump Station, **major construction shall not take place during the months of December through April.**

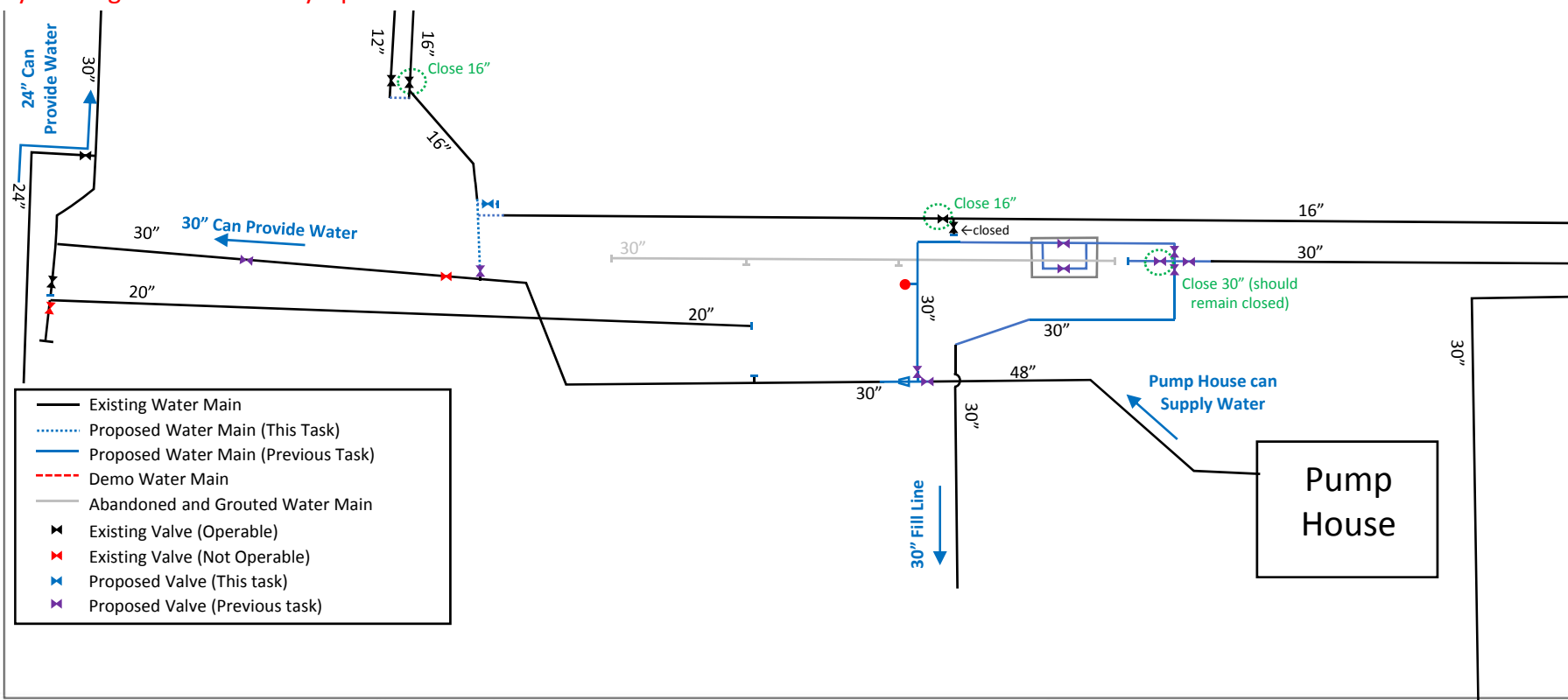
The Carica pump station must be capable of uninterrupted tank filling and pumping at this time.

Remobilization may be required.

The contractor may deviate from this sequence if a construction sequence plan is submitted and approved by the Engineer and County Operations.

Task 6 – Clean-up Site Piping

- Close new 30" valve, 16" valve to north, 16" valve
- Demo 20", 16", and 12" WM and 12" WM, cap
- Install 16" WM, Cut in 16" Tee and valves, connect to 30" WM, interconnect 12" and 16" water mains



Carica PS WM Improvements
Collier County, Florida

JOHNSON
ENGINEERING

JOHNSON ENGINEERING, INC.
2122 JOHNSON STREET
P.O. BOX 1550
FORT MYERS, FLORIDA 33902-1550
PHONE (239) 334-0046
FAX (239) 334-3661
E.B. #642 & L.B. #642

Construction Sequence Specification

DATE	PROJECT NO.	PIF NO.	SCALE	SHEET
08/20/18	20149700_110	-	As Shown	6-3

Due to seasonal demand and the significance of the Carica Pump Station, **major construction shall not take place during the months of December through April.**

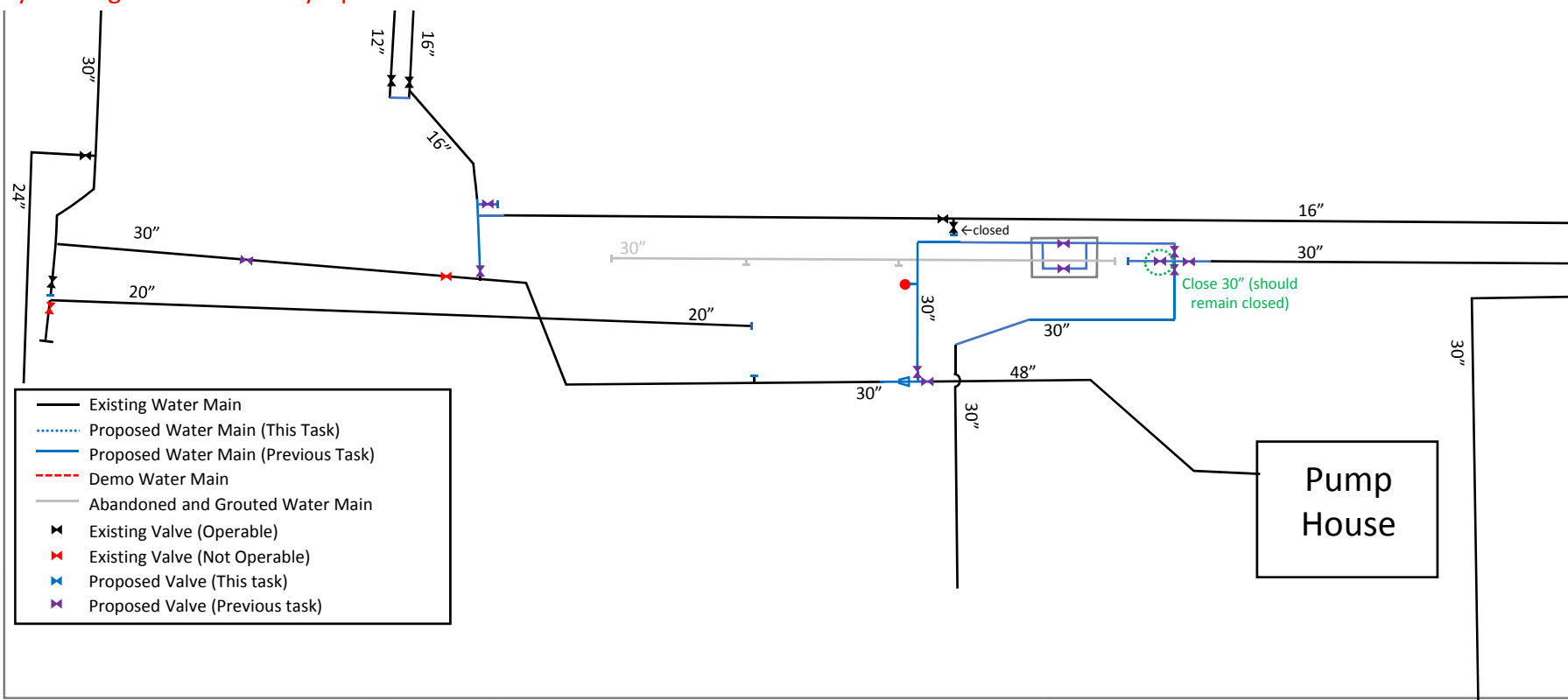
The Carica pump station must be capable of uninterrupted tank filling and pumping at this time.

Remobilization may be required.

The contractor may deviate from this sequence if a construction sequence plan is submitted and approved by the Engineer and County Operations.

Task 6 – Clean-up Site Piping

- Close new 30" valve, 16" valve to north, 16" valve
- Demo 20", 16", and 12" WM, cap
- Install 16" WM, Cut in 16" Tee and valves, connect to 30" WM interconnect 12" and 16" water mains
- Open Valves, 30" valve west of cross to remain closed



Carica PS WM Improvements
Collier County, Florida

JOHNSON
ENGINEERING

JOHNSON ENGINEERING, INC.
2122 JOHNSON STREET
P.O. BOX 1550
FORT MYERS, FLORIDA 33902-1550
PHONE (239) 334-0046
FAX (239) 334-3661
E.B. #642 & L.B. #642

Construction Sequence Specification

DATE	PROJECT NO.	REV. NO.	SCALE	SHEET
08/20/18	20149700-110	-	As Shown	6-4

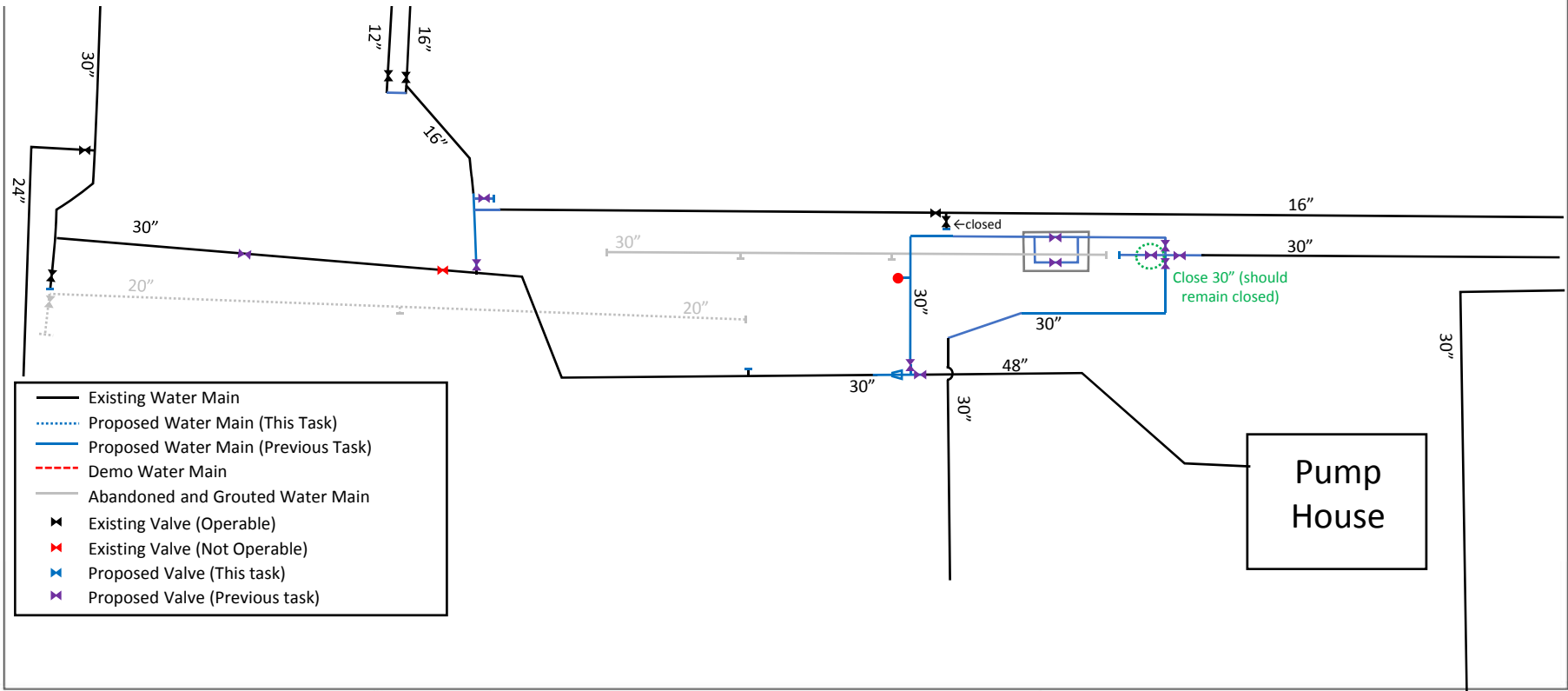
Due to seasonal demand and the significance of the Carica Pump Station, **major construction shall not take place during the months of December through April.**

The Carica pump station must be capable of uninterrupted tank filling and pumping at this time.
Remobilization may be required.

The contractor may deviate from this sequence if a construction sequence plan is submitted and approved by the Engineer and County Operations.

Task 7 – Abandon and Grout Site Piping

a. Abandon and grout 20" and 12" WM



Carica PS WM Improvements
Collier County, Florida

JOHNSON
ENGINEERING

JOHNSON ENGINEERING, INC.
2122 JOHNSON STREET
P.O. BOX 1550
FORT MYERS, FLORIDA 33907-1550
PHONE (239) 334-0046
FAX (239) 334-3661
E.B. #642 & L.B. #642

Construction Sequence Specification

DATE 08/20/18	PROJECT NO. 20149700-110	REV. NO. -	SCALE As Shown	SHEET 7-1
------------------	-----------------------------	---------------	-------------------	--------------

Due to seasonal demand and the significance of the Carica Pump Station, **major construction shall not take place during the months of December through April.**

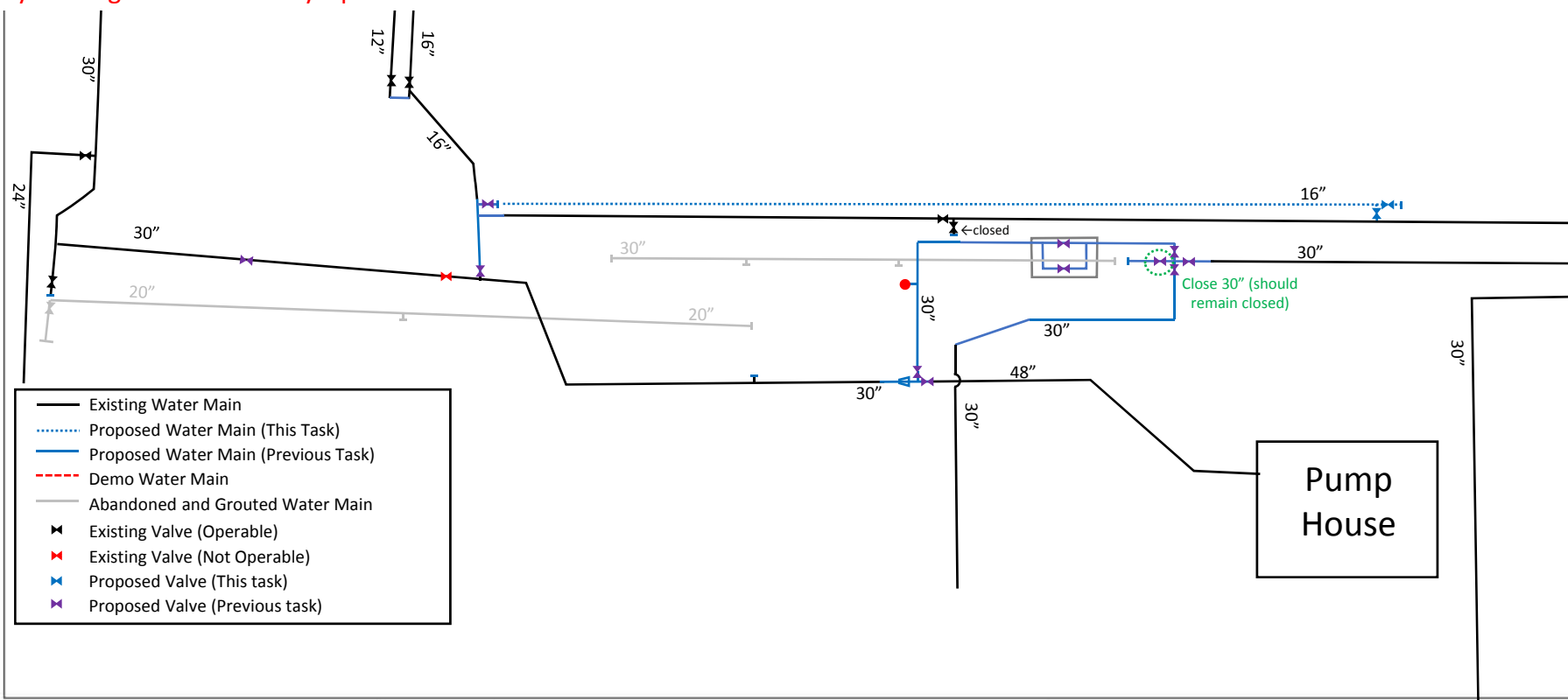
The Carica pump station must be capable of uninterrupted tank filling and pumping at this time.

Remobilization may be required.

The contractor may deviate from this sequence if a construction sequence plan is submitted and approved by the Engineer and County Operations.

Task 8 – Replace 16” Cast Iron WM

- a. Install parallel 16” WM with valves and cap



Carica PS WM Improvements
Collier County, Florida

JOHNSON
ENGINEERING

JOHNSON ENGINEERING, INC.
2122 JOHNSON STREET
P.O. BOX 1550
FORT MYERS, FLORIDA 33907-1550
PHONE (239) 334-0046
FAX (239) 334-3661
E.B. #642 & L.B. #642

Construction Sequence Specification

DATE	PROJECT NO.	FILE NO.	SCALE	SHEET
08/20/18	20149700-110	-	As Shown	8-1

Due to seasonal demand and the significance of the Carica Pump Station, **major construction shall not take place during the months of December through April.**

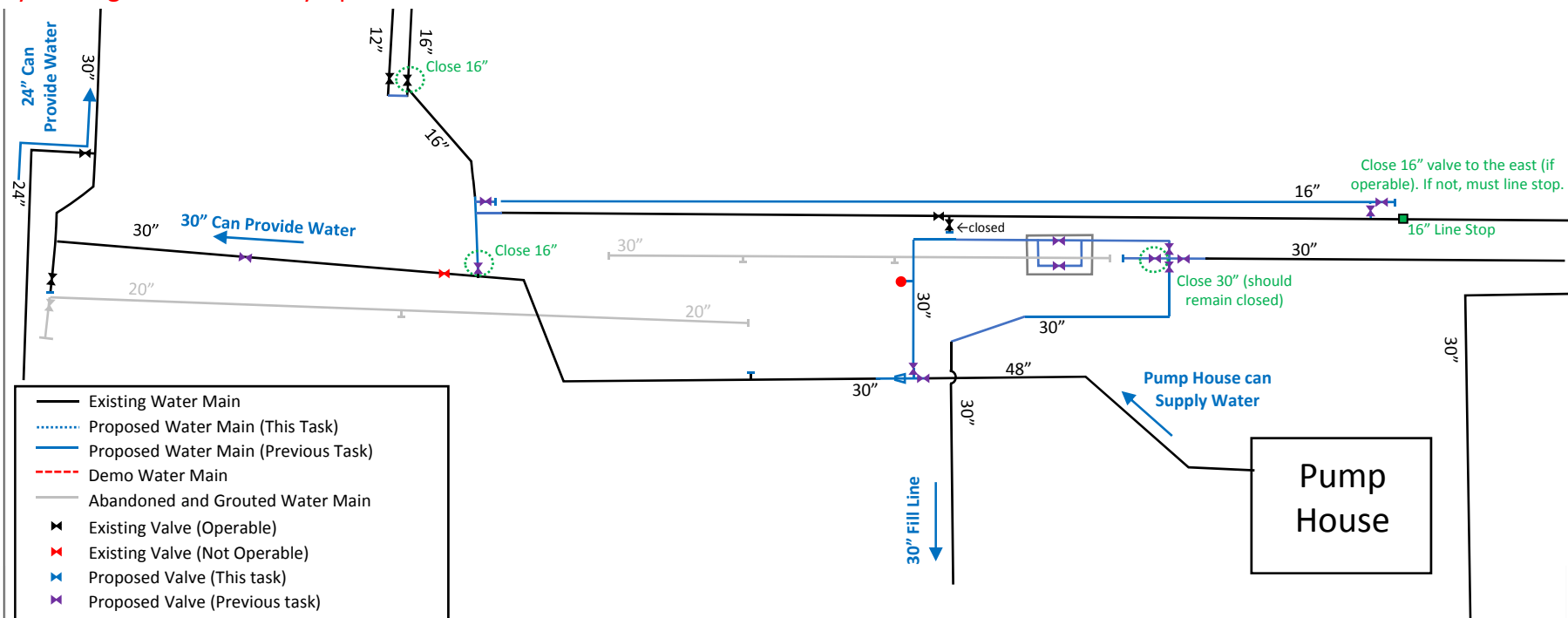
The Carica pump station must be capable of uninterrupted tank filling and pumping at this time.

Remobilization may be required.

The contractor may deviate from this sequence if a construction sequence plan is submitted and approved by the Engineer and County Operations.

Task 8 – Replace 16” Cast Iron WM

- Install parallel 16” WM with valves and cap
- Close 16” valve to the north, 16” valve to the south, 16” valve to the east (if operable). If not operable, must single line stop.



Due to seasonal demand and the significance of the Carica Pump Station, **major construction shall not take place during the months of December through April.**

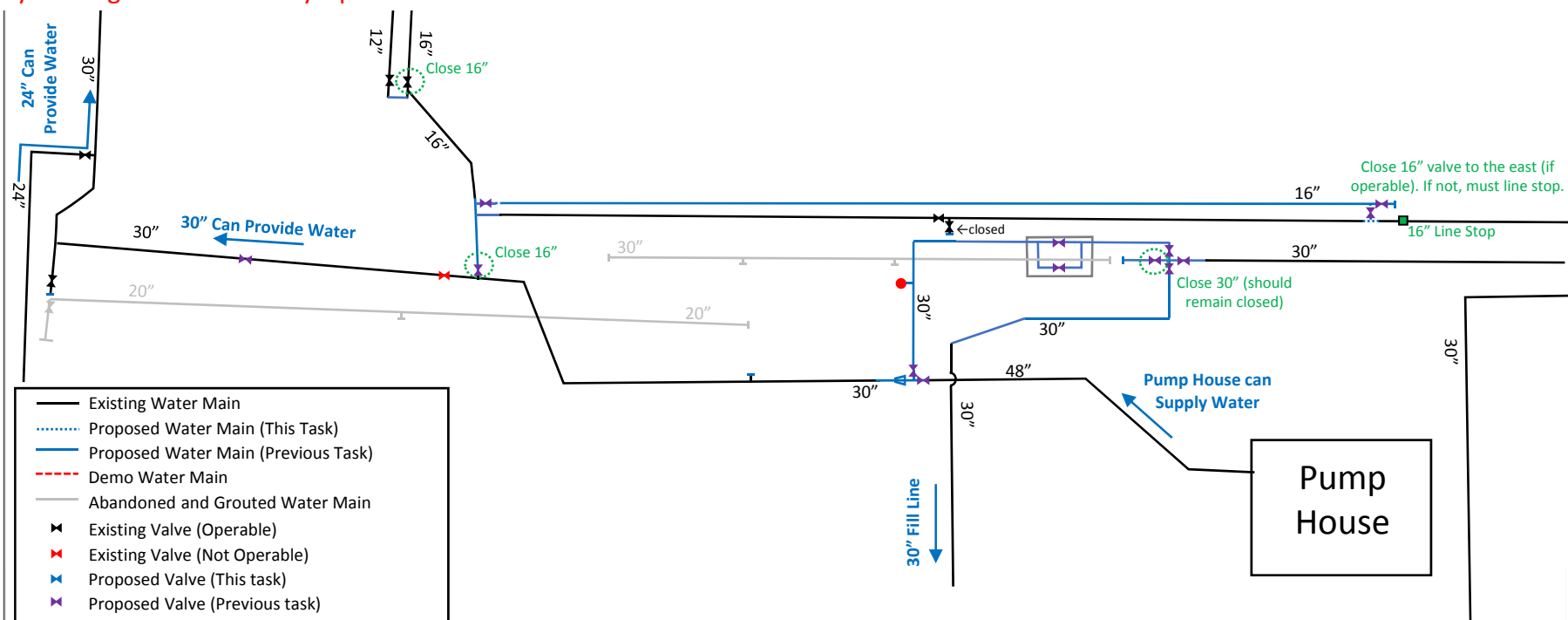
The Carica pump station must be capable of uninterrupted tank filling and pumping at this time.

Remobilization may be required.

The contractor may deviate from this sequence if a construction sequence plan is submitted and approved by the Engineer and County Operations.

Task 8 – Replace 16” Cast Iron WM

- Install parallel 16” WM with valves and cap
- Close 16” valve to the north, 16” valve to the south, 16” valve to the east (if operable). If not operable, must single line stop.
- Connect to existing 16” WM with 16” 90°



Carica PS WM Improvements
Collier County, Florida

JOHNSON
ENGINEERING

JOHNSON ENGINEERING, INC.
2122 JOHNSON STREET
P.O. BOX 1550
FORT MYERS, FLORIDA 33907-1550
PHONE (239) 334-0046
FAX (239) 334-3661
E.B. #842 & L.B. #642

Construction Sequence Specification

DATE	PROJECT NO.	PIF NO.	SCALE	SHEET
08/20/18	20149700-110	-	As Shown	8-3

Due to seasonal demand and the significance of the Carica Pump Station, **major construction shall not take place during the months of December through April.**

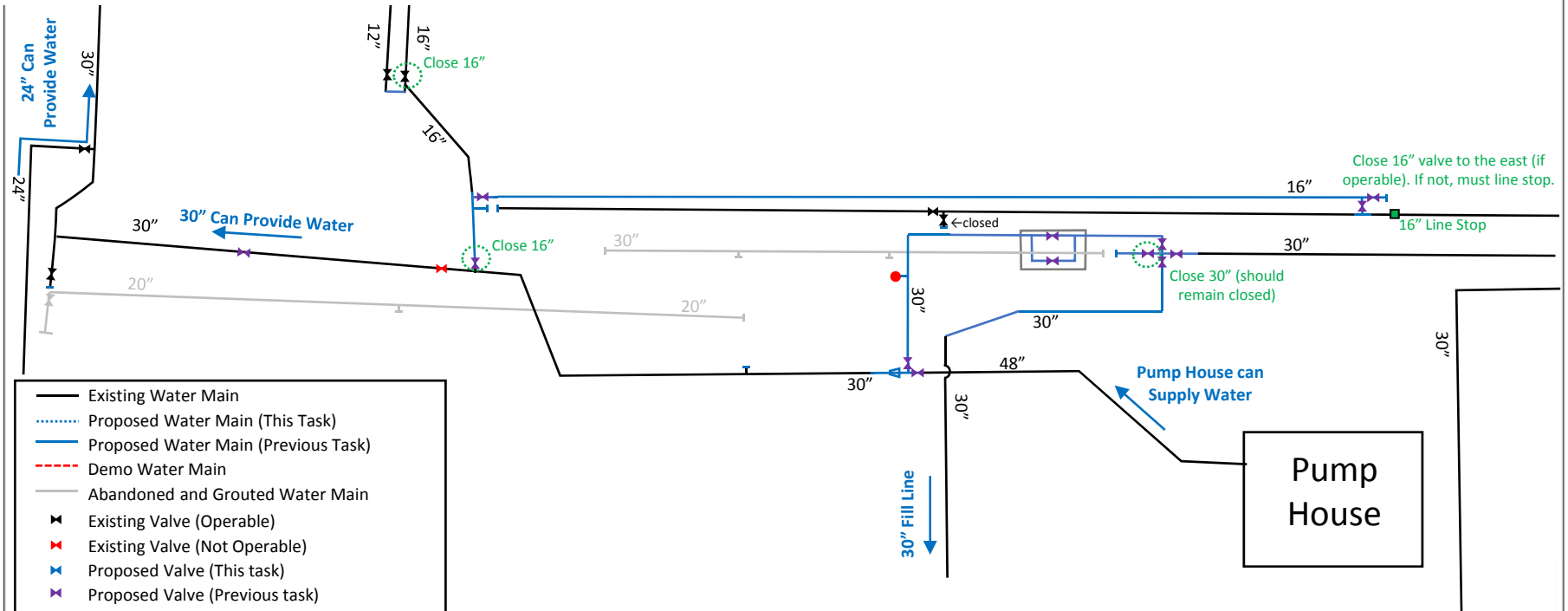
The Carica pump station must be capable of uninterrupted tank filling and pumping at this time.

Remobilization may be required.

The contractor may deviate from this sequence if a construction sequence plan is submitted and approved by the Engineer and County Operations.

Task 8 – Replace 16" Cast Iron WM

- Install parallel 16" WM with valves and cap
- Close 16" valve to the north, 16" valve to the south, 16" valve to the east (if operable). If not operable, must single line stop.
- Connect to existing 16" WM with 16" 90°
- Disconnect 16" cast iron WM and place new 16" WM in service



Carica PS WM Improvements
Collier County, Florida

JOHNSON
ENGINEERING

JOHNSON ENGINEERING, INC.
2122 JOHNSON STREET
P.O. BOX 1550
FORT MYERS, FLORIDA 33907-1550
PHONE (239) 334-0046
FAX (239) 334-3661
E.B. #842 & L.B. #642

Construction Sequence Specification

DATE	PROJECT NO.	PIF NO.	SCALE	SHEET
08/20/18	20149700_110	-	As Shown	8-4

Due to seasonal demand and the significance of the Carica Pump Station, **major construction shall not take place during the months of December through April.**

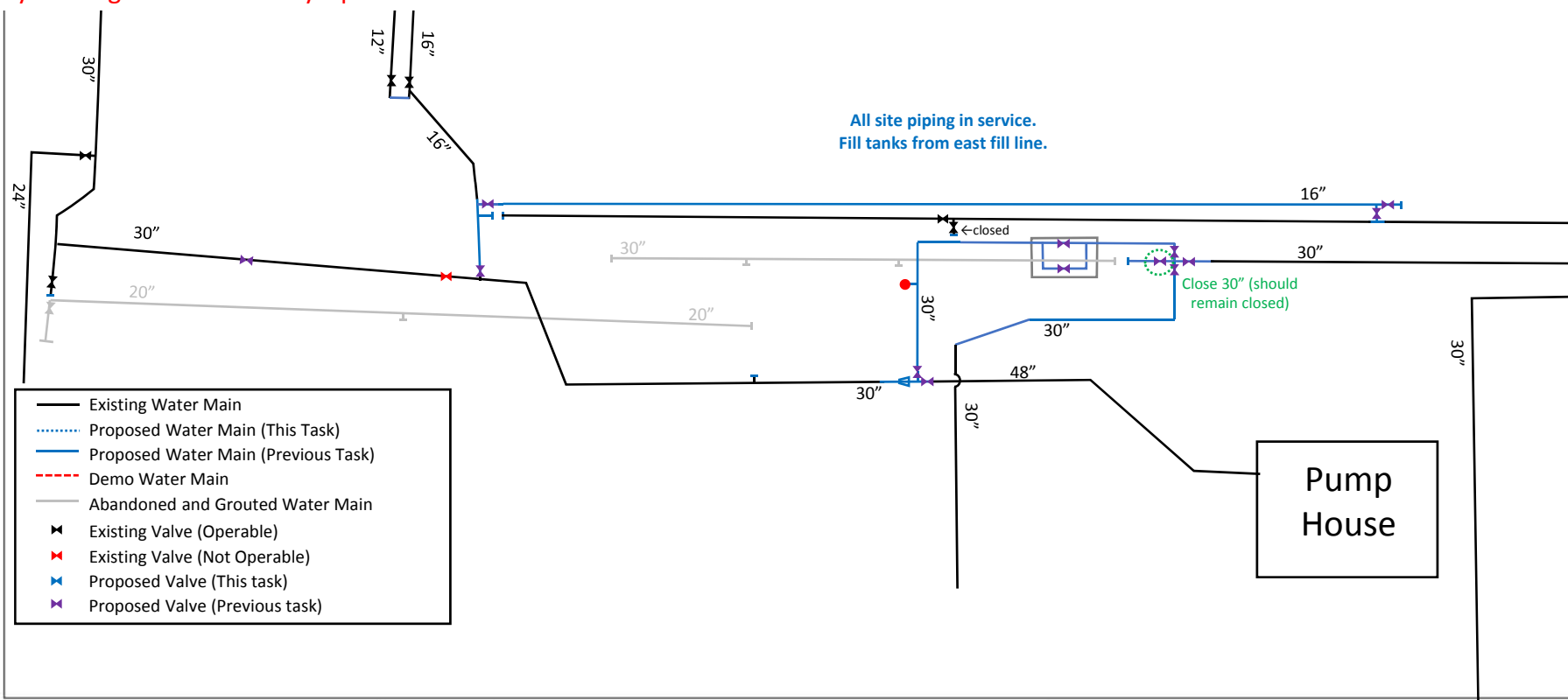
The Carica pump station must be capable of uninterrupted tank filling and pumping at this time.

Remobilization may be required.

The contractor may deviate from this sequence if a construction sequence plan is submitted and approved by the Engineer and County Operations.

Task 8 – Replace 16” Cast Iron WM

- Install parallel 16” WM with valves and cap
- Close 16” valve to the north, 16” valve to the south, 16” valve to the east (if operable). If not operable, must single line stop.
- Connect to existing 16” WM with 16” 90°
- Disconnect 16” cast iron WM and place new 16” WM in service
- Remove line stop, open valves, 30” valve west of cross to remain closed



Due to seasonal demand and the significance of the Carica Pump Station, **major construction shall not take place during the months of December through April.**

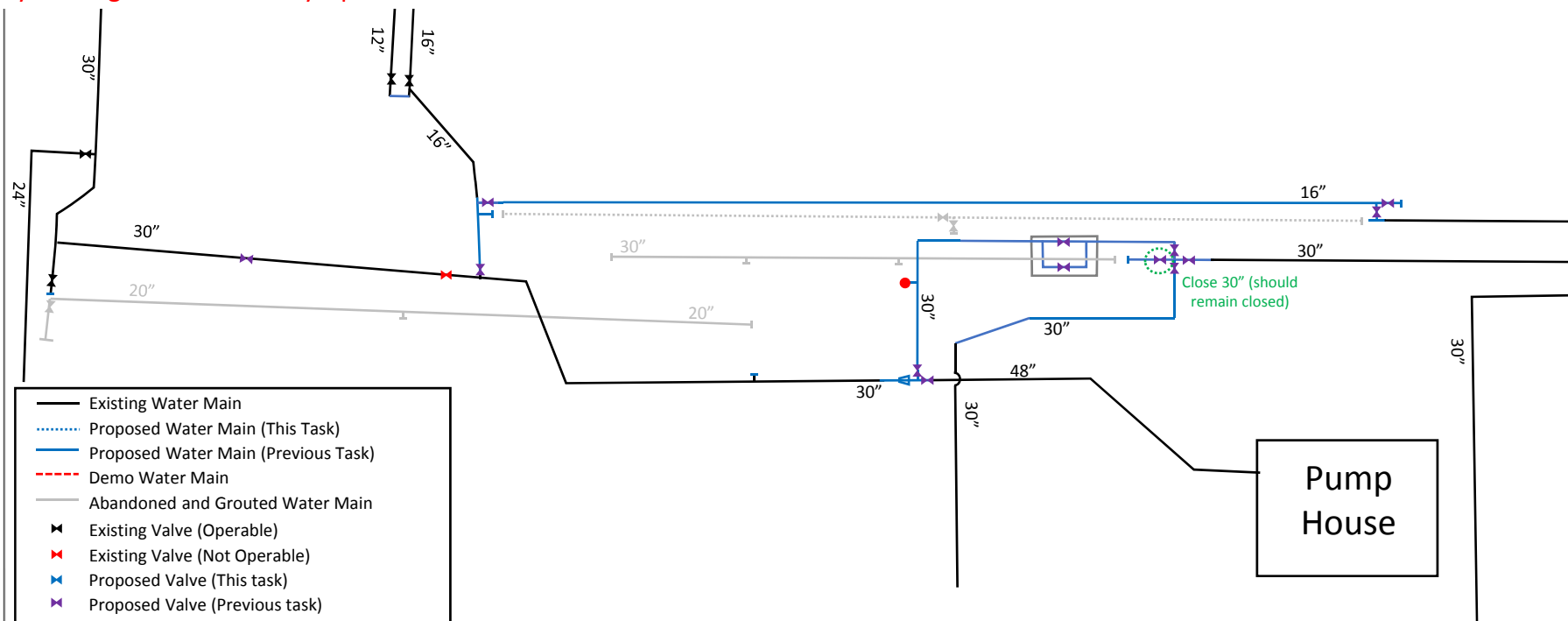
The Carica pump station must be capable of uninterrupted tank filling and pumping at this time.

Remobilization may be required.

The contractor may deviate from this sequence if a construction sequence plan is submitted and approved by the Engineer and County Operations.

Task 8 – Replace 16” Cast Iron WM

- Install parallel 16” WM with valves and cap
- Close 16” valve to the north, 16” valve to the south, 16” valve to the east (if operable). If not operable, must single line stop.
- Connect to existing 16” WM with 16” 90°
- Disconnect 16” cast iron WM and place new 16” WM in service
- Remove line stop, open valves
- Abandon and grout 16” cast iron WM



Carica PS WM Improvements
Collier County, Florida



JOHNSON ENGINEERING, INC.
2122 JOHNSON STREET
P.O. BOX 1550
FORT MYERS, FLORIDA 33907-1550
PHONE (239) 334-0046
FAX (239) 334-3661
E.B. #842 & L.B. #642

Construction Sequence Specification

DATE	PROJECT NO.	REV. NO.	SCALE	SHEET
08/20/18	20149700-110	-	As Shown	8-6

Due to seasonal demand and the significance of the Carica Pump Station, **major construction shall not take place during the months of December through April.**

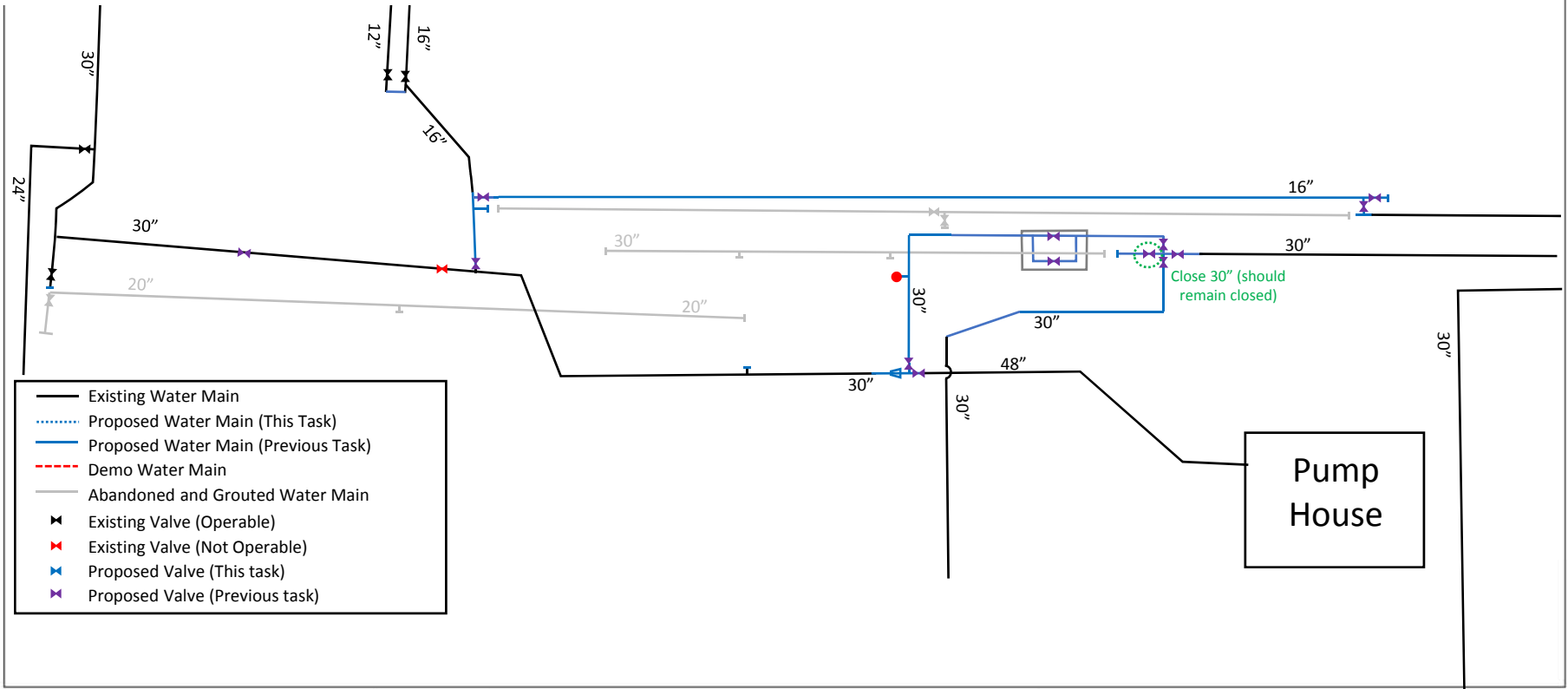
The Carica pump station must be capable of uninterrupted tank filling and pumping at this time.

Remobilization may be required.

Entire Project Complete



The contractor may deviate from this sequence if a construction sequence plan is submitted and approved by the Engineer and County Operations.



- Existing Water Main
- Proposed Water Main (This Task)
- Proposed Water Main (Previous Task)
- - - Demo Water Main
- Abandoned and Grouted Water Main
- ✕ Existing Valve (Operable)
- ✕ Existing Valve (Not Operable)
- ✕ Proposed Valve (This task)
- ✕ Proposed Valve (Previous task)

Carica PS WM Improvements
Collier County, Florida



JOHNSON ENGINEERING, INC.
2122 JOHNSON STREET
P.O. BOX 1550
FORT MYERS, FLORIDA 33902-1550
PHONE (239) 334-0046
FAX (239) 334-3661
E.B. #642 & L.B. #642

Construction Sequence Specification

DATE	PROJECT NO.	REV. NO.	SCALE	SHEET
08/20/18	20149700-110	-	As Shown	PR.