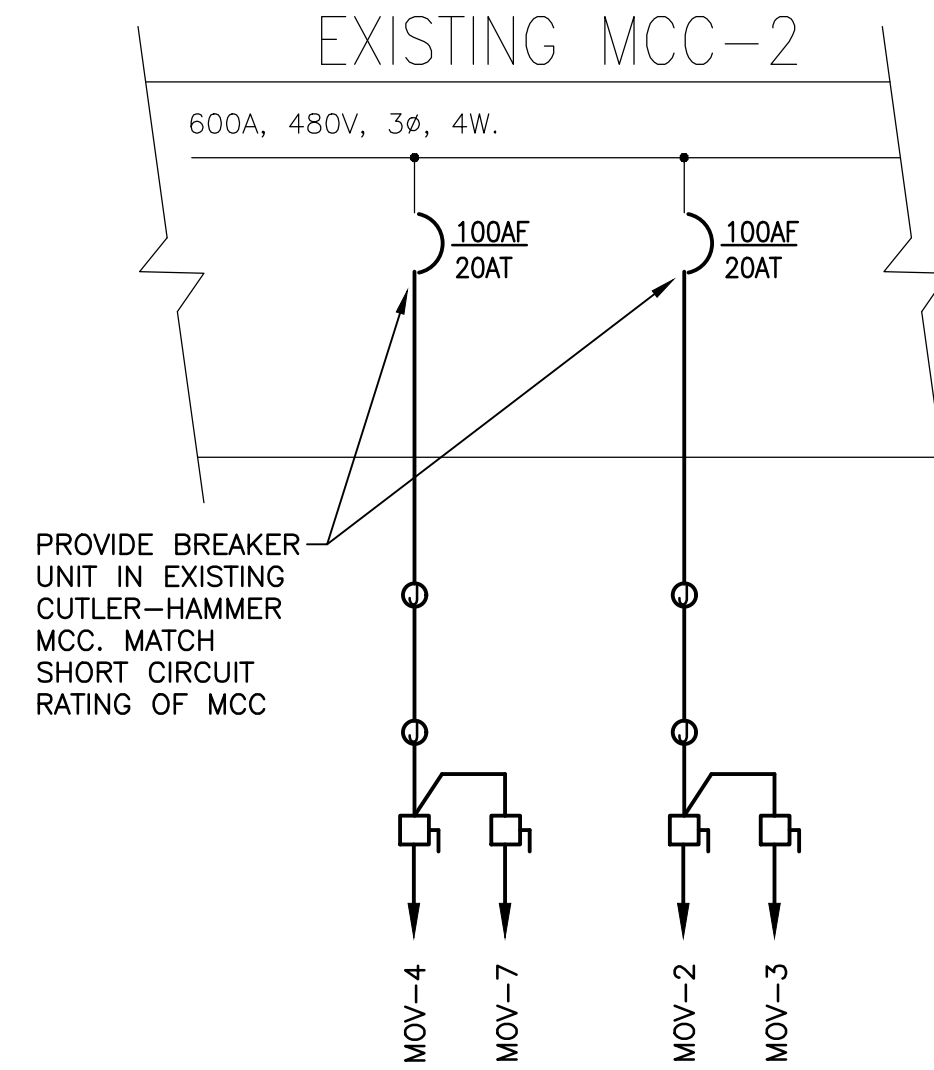
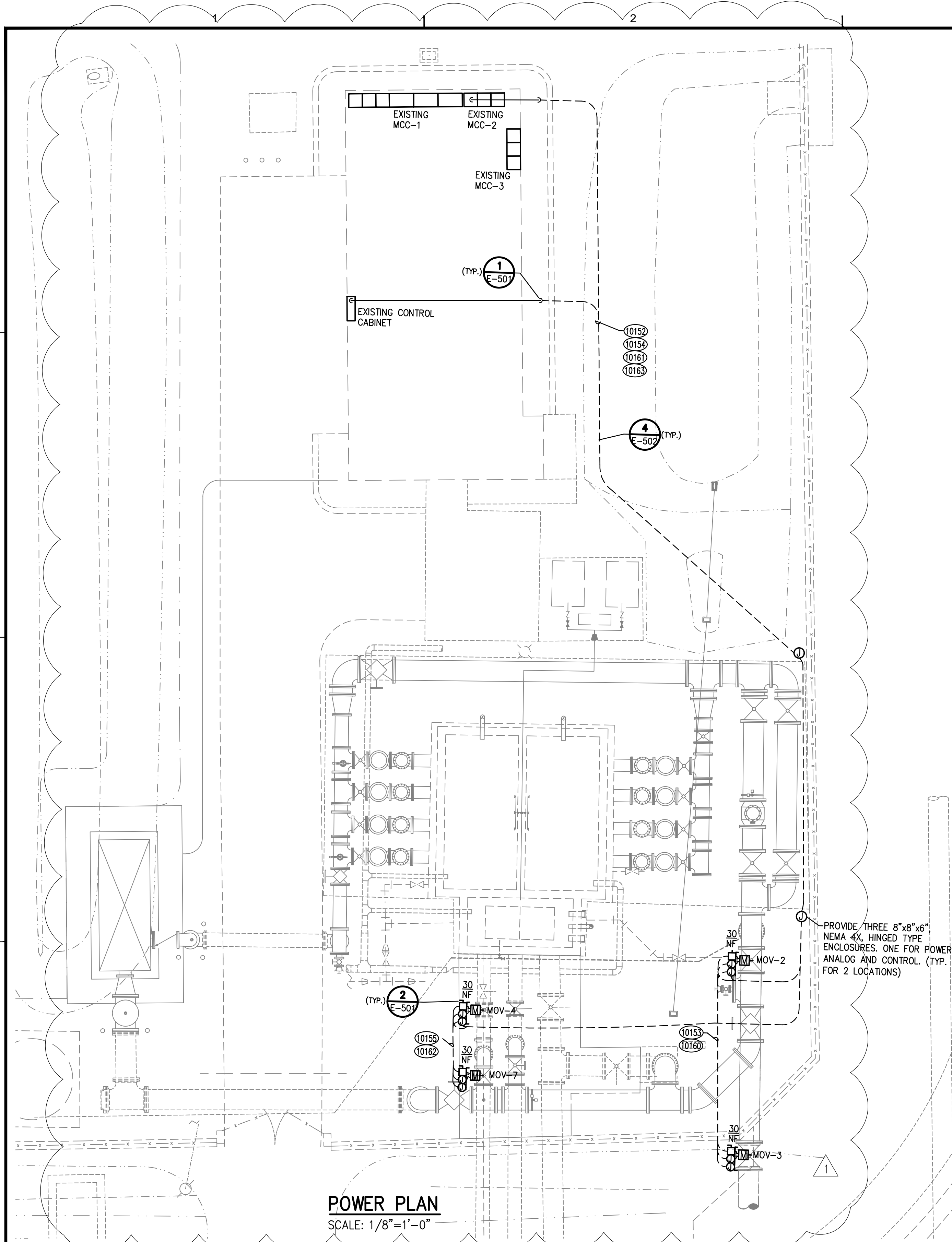
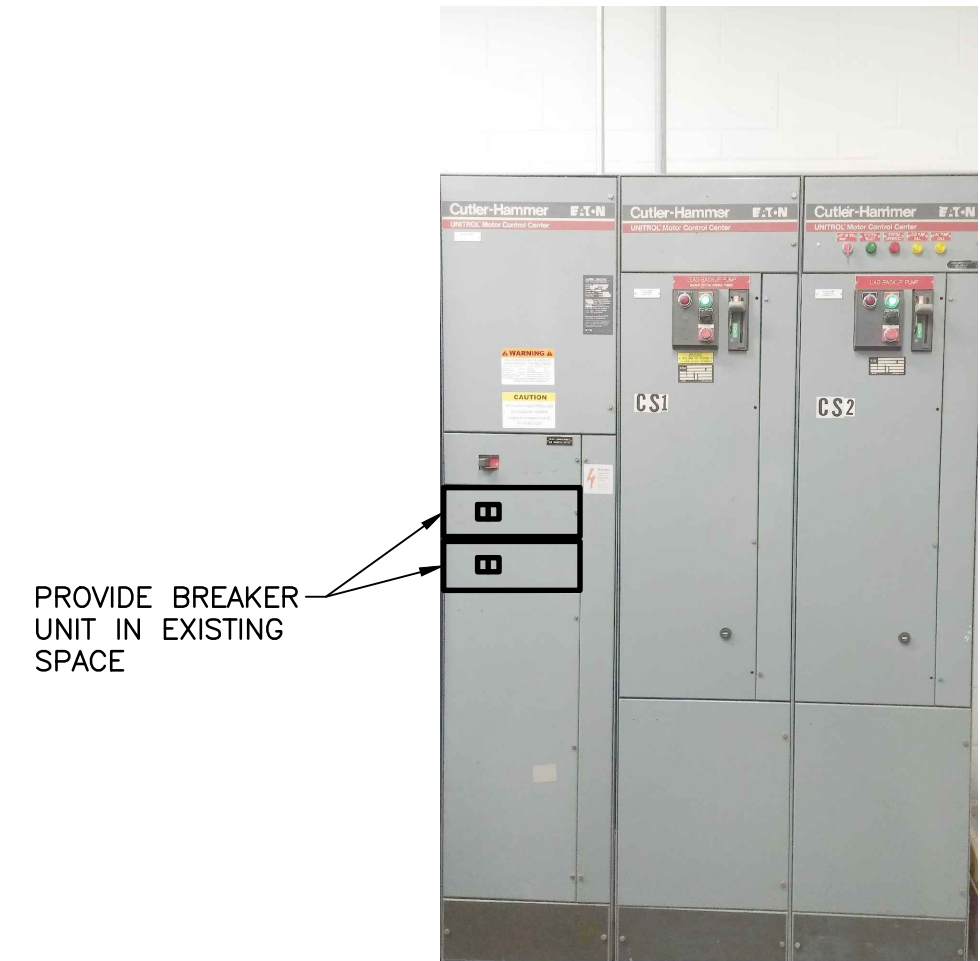


FILE NAME: P:\COLLIER_COUNTY\60334966\WV BASIN CONSTRUCTION SERVICES\600 CONSTRUCTION - MPS 306\CONFORMED FEB19\CAD\SHEETS\E-204.DWG LAST SAVED BY: CHISUMD PLOT DATE: 2/26/2019 3:27:47 PM



SINGLE LINE DIAGRAM
SCALE: NTS



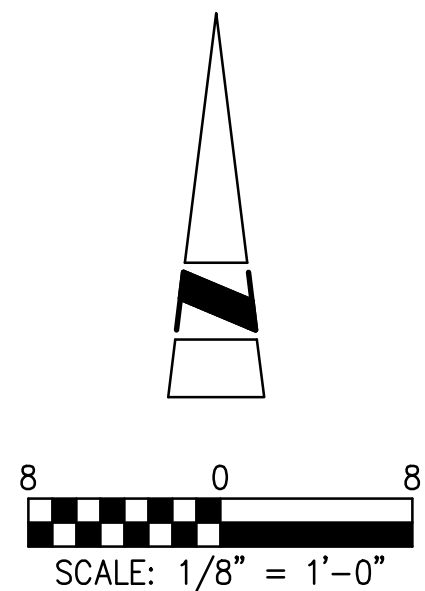
EXISTING MCC-2 ELEVATION
SCALE: NTS



EXISTING CONTROL CABINET MODIFICATIONS
SCALE: NTS

GENERAL NOTES:

CONTRACTOR SHALL CONTACT QUALITY ENTERPRISES USA, INC. FOR MPS 302 BYPASS PUMPING IMPROVEMENTS PROJECT TO OBTAIN AS-BUILT INFORMATION FOR MOV'S.
CONTACT: GREG HAAS
PROJECT MANAGER
3494 SHEARWATER STREET
NAPLES, FLORIDA 34117-8414
CELL: (517) 599-3214
TEL: (239) 435-7200



2	CONFORMED	FEB-19
1	ADDENDUM # 2: PLAN VIEW EXTENDED TO SHOW MOV-3 AND MPS 302 FUTURE PIPE IMPROVEMENTS	CTC MAY-18
MARK	DESCRIPTION	APP DATE

AECOM

AECOM Technical Services, Inc.
4415 Metro Parkway, Suite 404
Fort Myers, Florida 33916
T 239.278.7996 F 239.278.0913
FL Engineering Business No. EB-8115
www.aecom.com

This drawing has been prepared for the use of AECOM's client and may not be used, reproduced or relied upon by third parties, except as agreed by AECOM and its client, as required by law or for use by governmental reviewing agencies. AECOM accepts no responsibility, and denies any liability whatsoever, to any party that modifies this drawing without AECOM's express written consent.

PROJECT ENGINEER:
IRA S. BRANDELL, PE
REG NUMBER:
65814



WASTEWATER BASIN ANALYSIS - BASIN 306
MASTER PUMP STATION 306
MPS 302 POWER PLAN AND SINGLE LINE DIAGRAM

DRN:	DSN:	CHK:	DATE:
DK	DK	ISB	JUN-17
Do not scale this document. All measurements must be obtained from stated dimensions.			
PROJECT NUMBER: 60334966			
DRAWING NUMBER: E-204			
SHEET 83 OF 100			