

*Request for Competitive Solicitations
Rebid Sands SLR Roadway and
Drainage Pilot Project, Big Pine Key,
Monroe County, Florida
RFP-484-0-2023/1a
ADDENDUM NO. 1
February 14, 2023*

The information contained in this Addendum modifies, supplements, or replaces information contained in the Project Manual and is hereby made a part of the Contract Documents. The following items are clarifications, deletions, revisions, changes, and modifications that change the Project Manual only in the amount and to the extent hereinafter specified and set forth in this ADDENDUM NO. 1.

Note: Sands Rebid notice is also advertised in My Florida Marketplace - ITB-03791 – wherein it references Demandstar to obtain bid documents.

Questions, Responses and Clarifications:

Bid sheets, Plan sheet SQ-1B Summary of Items and Plan sheet 10-B have been revised.

Q1: Bid item 120-6 Embankment has a bid quantity of 5 cy. This quantity appears to be low – can the Engineer provide their takeoff?

R1: Bid item 120-6 Embankment quantity has been revised from 5 to 50 CY. This is a contingent item for unforeseen conditions.

Q2: Please clarify the discrepancy between sheet RD-5B & RD8B.

RD5B – shows Ave I as Milling, Resurfacing & Overbuild for the entire length.

RD8B – shows Ave I as Milling, Resurfacing & Overbuild to a certain point, but then shows Reconstruction at the top of the page for the remainder of the road.

R2: The Reconstruction on sheet RD8B is on Father Tony Way. Avenue I shall be Milling, Resurfacing & Overbuild for the station length indicated.

Q3: Please clarify the discrepancy between sheets RD-4B & RD10B.

Sheet RD-4B shows M&R /Overbuild on Father Tony Way with Reconstruction on the bottom of the page for Ave G.

Sheet RD-10B shows Reconstruction along Ave G (Sta 60+35) but also along Father Tony Way (top of the page).

R3: Refer to revised RD-10B. It is M&R/Overbuild along Father Tony Way at this location.

Q4: Sheet RD-15B. The plan view shows the work as reconstruction according to the Legend. The elevation view states the work is Milling, Resurfacing & Overbuild. Please clarify.

R4: The hatch presented on sheet RD-14B is consistent with M&R/Overbuild.

Q5: Sheet G-2B Note 7 states the Overbuild is to be with Type SP 9.5. Why is the Optional Base Group quantity (4232.30 SY) different from the Stabilization Type B quantity (3526.92 SY)?

R5: 285-704 Optional Base Group 4 has been revised from 4,232.30 SY to 3,526.92 SY. Refer to revised bid and SQ-1B Summary of Pay Items plan sheet.

All other items remain as called for in the documents.

End of Addendum No. 1

Judith Clarke, P.E. Digitally signed by Judith Clarke, P.E.
Date: 2023.02.15 10:28:59 -05'00'

Judy Clarke, Director of Engineering Services

Addendum 1 Revised -Monroe County Rebid Form: Sands Sea Level Rise Pilot Project

BID PROPOSAL

Item No.	Description	Unit	Quantity	Unit Price	Written Price	Line Total Price
101-1	MOBILIZATION	LS	1.00			
102-1	MAINTENANCE OF TRAFFIC	LS	1.00			
104-10-3	SEDIMENT BARRIER (STRAW WATTLE 9")	LF	3000			
104-18	INLET PROTECTION	EA	30.00			
110-1-1	CLEARING & DEGRUBBING	AC	1.18			
120-1A	REGULAR EXCAVATION – Roadway	CY	1630.00			
120-6	EMBANKMENT	CY	50.00			
160-4	STABILIZATION TYPE B	SY	3526.92			
285-704	OPTIONAL BASE GROUP 04 - ASPHALT BASE (TYPE B-12.5)	SY	3526.92			
286-1	TURNOUT CONSTRUCTION (ASPHALT)	SY	43.78			
327-70-1	MILLING+OVERLAY EXIST ASPH PAVT, 1" AVG DEPTH	SY	4519.80			
334-1-11	SUPERPAVE ASPHALTIC CONC, TRAFFIC A	TN	714.14			
530-74	BEDDING STONE (NO. 57 STONE)	TN	266.37			
570-1-2	PERFORMANCE TURF, SOD	SY	2777.11			
700-1-60	SINGLE POST SIGN, RELOCATE	AS	14.00			
706-3	RETRO-REFLECTIVE PAVEMENT MARKERS	EA	72.00			

Addendum 1 Revised Monroe County Rebid Form: Sands Sea Level Rise Pilot Project

BID PROPOSAL

Item No.	Description	Unit	Quantity	Unit Price	Written Price	Line Total Price
711-11-125	THERMOPLASTIC, STANDARD, WHITE, SOLID 24"	LF	194.06			
711-16-201	THERMOPLASTIC, STANDARD-OTHER SURFACES, YELLOW, SOLID, 6"	GM	0.06			
711-16-231	THERMOPLASTIC, STANDARD-OTHER SURFACES, YELLOW, SKIP, 6"	GM	0.25			
1050-16-003	UTILITY PIPE- REMOVE & DISPOSE, 5-7.9"	LF	420.00			
1050-51-206	6" WM DI PIPE FURNISH & INSTALL	LF	420.00			
425-5	ADJUST MANHOLE (UTILITIES) (TOP ADJUSTMENT)	SY	2.00			
448-73-2	FURNISH AND INSTALL PUMPS: FLYGT MODEL LL3602/845	EA	4.00			
448-73-3	FURNISH AND INSTALL CONTECH TREATMENT UNIT: MODEL CDS5678	EA	1.00			
448-73-4	ELECTRICAL (INCL VFD, ELECT SERVICE, ETC.)	LS	1.00			
125-3	SELECT BEDDING MATERIAL	CY	395.00			
1050-51-224	UTILITY PIPE-DUCTILE IRON/CAST IRON, FURNISH & INSTALL, WATER/SEWER, 24"	LF	578.00			
1050-51-230-36	UTILITY PIPE-DUCTILE IRON/CAST IRON, FURNISH & INSTALL, WATER/SEWER, 36"	LF	456.00			

Addendum 1 Revised Monroe County Rebid Form: Sands Sea Level Rise Pilot Project

BID PROPOSAL

Item No.	Description	Unit	Quantity	Unit Price	Written Price	Line Total Price
1050-51-230-48	UTILITY PIPE-DUCTILE IRON/CAST IRON, FURNISH & INSTALL, WATER/SEWER, 48"	LF	477.00			
1080-29-124	UTILITY FIXTURE, MECHANICAL JOINT RESTRAINT, FURNISH & INSTALL, 24"	EA	30.00			
1080-11-509	UTILITY FIXTURES, F&I, 20-49.9", MECHANICAL JOINT RESTRAINT	EA	18.00			
1055 51-124	UTILITY FITTINGS, DUCTILE IRON/CAST IRON, FURNISH AND INSTALL ELBOW, 24"	EA	14.00			
1055 51-136	UTILITY FITTINGS, DUCTILE IRON/CAST IRON, FURNISH AND INSTALL ELBOW, 36"	EA	4.00			
1055 51-148	UTILITY FITTINGS, DUCTILE IRON/CAST IRON, FURNISH AND INSTALL ELBOW, 48"	EA	5.00			
1055-11-425	UTILITY FITTING, F&I,DI/CI,TEE,20-49.9"	EA	12.00			
1055-51-524	UTILITY FITTINGS, DUCTILE IRON/CAST IRON, FURNISH & INSTALL, CAP/PLUG, 24"	EA	1.00			
1055-11-435	UTILITY FITTINGS, F&I, DI/CI, REDUCER, 20 - 49.9"	EA	3.00			
1080-24-124	UTILITY FIXTURE, VALVE ASSEMBLY, FURNISH AND INSTALL, 24" FOR GATE AND SWING VALVES	EA	20.00			
1080-24-102	UTILITY FIXTURE, VALVE ASSEMBLY, FURNISH AND INSTALL, 2"	EA	2.00			

Rebid Sands Sea Level Rise Pilot

Addendum 1 Revised Monroe County Rebid Form: Sands Sea Level Rise Pilot Project

BID PROPOSAL

Item No.	Description	Unit	Quantity	Unit Price	Written Price	Line Total Price
1050-16-002	UTILITY PIPE- REMOVE & DISPOSE, 2-4.9"	LF	300.00			
425-15-41	INLETS, DT BOT, TYPE D <10'	EA	34.00			
425-2-71	MANHOLES, J-7 <10'	EA	16.00			
425-2-72	MANHOLES, J-7 >10'	EA	4.00			
430-173-115	PIPE CULVERT, OPTIONAL MATERIAL ROUND, 15" SD	LF	30.00			
430-173-118	PIPE CULVERT, OPTIONAL MATERIAL ROUND, 18" SD	LF	1365.00			
430-173-124	PIPE CULVERT, OPTIONAL MATERIAL ROUND, 24" SD	LF	1426.00			
430-173-136	PIPE CULVERT, OPTIONAL MATERIAL ROUND, 36" SD	LF	151.00			
288- INJECTION WELLS	FURNISH AND INSTALL INJECTION WELLS AND ANCILLARY EQUIPMENT (EXCEPT GATE VALVES)	LS	12			
400-4-25	SUPPORT OF EXCAVATION-COFFERDAM	LS	1.00			
400-4-25	CONCRETE-PUMP STATION	CY	269.40			
415-1-6	MISCELLANEOUS STEEL-PUMP STATION	LB	71130.81			

Addendum 1 Revised Monroe County Rebid Form: Sands Sea Level Rise Pilot Project

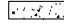

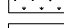
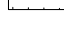
Item No.	Description	Unit	Quantity	Unit Price	Written Price	Line Total Price
120-1B	REGULAR EXCAVATION, DRAINAGE STRUCTURES, PIPING AND PUMP STATION	CY	6870.68			
580-1-1	LANDSCAPE COMPLETE – SMALL PLANTS	EA	88.00			
580-1-2	LANDSCAPE COMPLETE – LARGE PLANTS	EA	20.00			
286-1	TURNOUT CONSTRUCTION GRAVEL	SY	439.20			
581-1-3	RELOCATE TREES-MULTI-TRUNK	EA	1			
425-15-42	INLETS-DT BOT, TYPE D> 10"	EA	4			
MC permit	Monroe County permit# 20101595 pass thru amount \$45,966.44 (awarded contractor to pick up and pay for)	LS	1	\$45,966.44	Forty-five thousand nine hundred sixty six dollars and forty four cents.	\$45,966.44

Grand Total Rebid Amount (includes permit amount above)

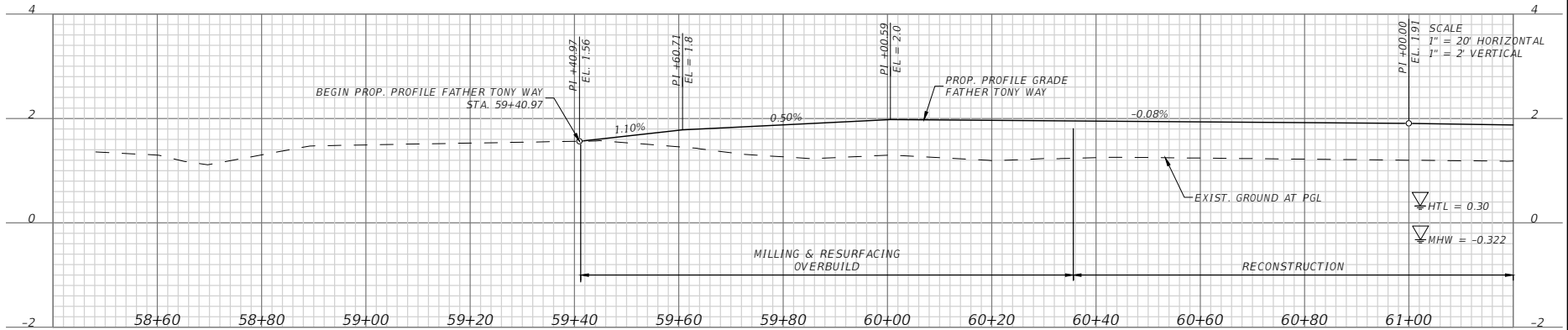
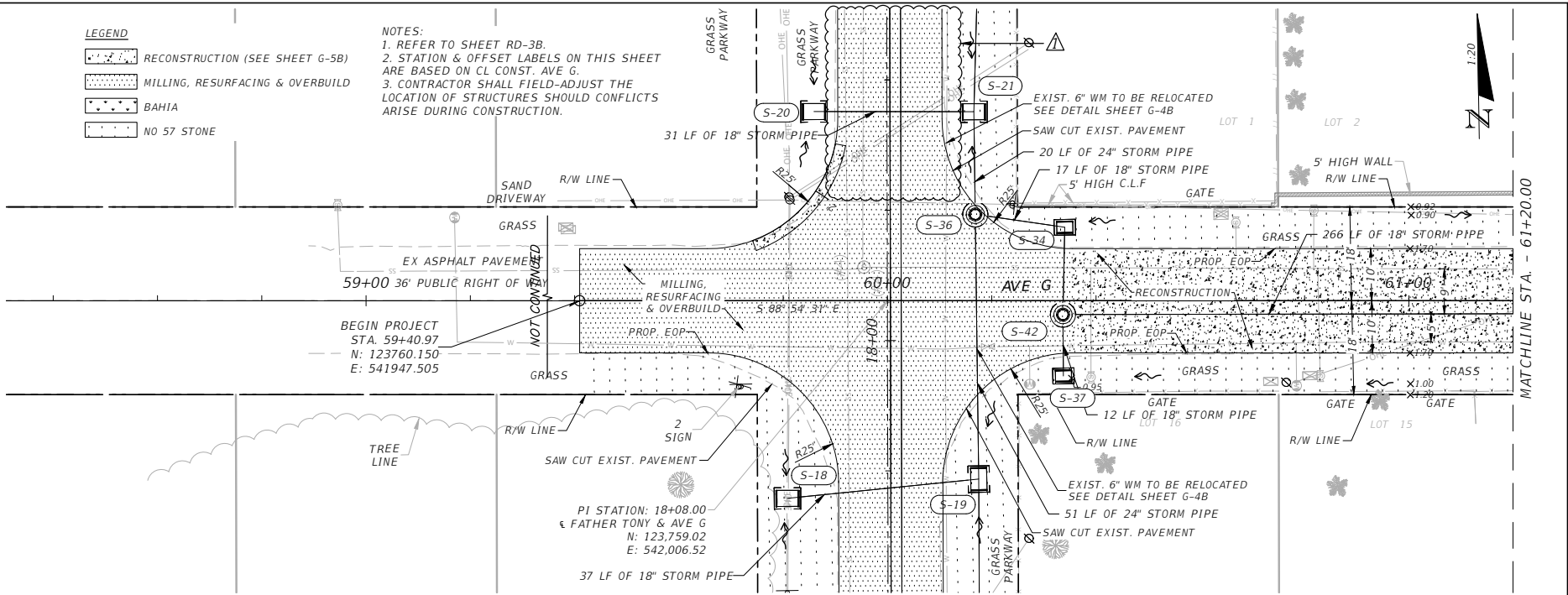
\$ _____

Company Name - Bidder _____

LEGEND

-  RECONSTRUCTION (SEE SHEET G-5B)
-  MILLING, RESURFACING & OVERBUILD
-  BAHIA
-  NO 57 STONE

NOTES:
 1. REFER TO SHEET RD-3B.
 2. STATION & OFFSET LABELS ON THIS SHEET ARE BASED ON CL CONST. AVE G.
 3. CONTRACTOR SHALL FIELD-ADJUST THE LOCATION OF STRUCTURES SHOULD CONFLICTS ARISE DURING CONSTRUCTION.



REVISIONS			
DATE	DESCRIPTION	DATE	DESCRIPTION
2/13/22	BID COMMENTS		

WERNER REINEFELD, P.E.
 P.E. LICENSE NUMBER 63042
 WSP USA, 7650 CORPORATE CENTER DRIVE,
 SUITE 300, MIAMI, FLORIDA 33126
 CERTIFICATE OF AUTHORIZATION 01462



SEA LEVEL RISE ROADWAY AND DRAINAGE PILOT PROJECT
 SANDS SUBDIVISION - BIG PINE KEY
 MONROE COUNTY - DEPARTMENT OF ENGINEERING
 ROADWAY PLAN & PROFILE (AVE G)

SHEET NO.
 RD-10B

**MONROE COUNTY
SEA LEVEL RISE ROADWAY AND
DRAINAGE PILOT PROJECT - BIG PINE KEY
SUMMARY OF PAY ITEMS**

PAY ITEM NO.	ITEM DESCRIPTION	UNIT	QUANTITY
101-1	MOBILIZATION	LS	1.00
102-1	MAINTENANCE OF TRAFFIC	LS	1.00
104-10-3	SEDIMENT BARRIER (STRAW WATTLE 9")	LF	3000
104-18	INLET PROTECTION	EA	30.00
110-1-1	CLEARING & GRUBBING	AC	1.18
120-1A	REGULAR EXCAVATION, ROADWAY	CY	1630.00
120-6	EMBANKEMENT	CY	50.00
160-4	STABILIZATION TYPE B	SY	3526.92
285-704	OPTIONAL BASE GROUP 04 - ASPHALT BASE (TYPE B-12.5)	SY	3526.92
286-1	TURNOUT CONSTRUCTION (ASPHALT)	SY	43.78
286-1	TURNOUT CONSTRUCTION (GRAVEL)	SY	439.2
327-70-1	MILLING EXIST ASPH PAVT, 1" AVG DEPTH	SY	4519.80
334-1-11	SUPERPAVE ASPHALTIC CONC, TRAFFIC A	TN	714.14
530-74	BEDDING STONE (NO. 57 STONE)	TN	266.37
570-1-2	PERFORMANCE TURF, 50D	SY	2777.11
700-1-60	SINGLE POST SIGN, RELOCATE	AS	14.00
706-3	RETRO-REFLECTIVE PAVEMENT MARKERS	EA	72.00
711-11-125	THERMOPLASTIC, STANDARD, WHITE, SOLID 24"	LF	194.06
711-16-201	THERMOPLASTIC, STANDARD-OTHER SURFACES, YELLOW, SOLID, 6"	GM	0.06
711-16-231	THERMOPLASTIC, STANDARD-OTHER SURFACES, YELLOW, SKIP, 6"	GM	0.25
0581-1-3	RELOCATE TREES AND PALMS, MULTI-TRUNK OR CLUSTERING	EA	1.0
10-50-16-003	UTILITY PIPE, REMOVE & DISPOSE, 5-7.9"	LF	420.00
1050-51-206	6" WM DI PIPE FURNISH & INSTALL	LF	420.00
425-5	ADJUST MANHOLE (UTILITIES) (TOP ADJUSTMENT)	SY	2.00
120-1B	REGULAR EXCAVATION, DRAINAGE STRUCTURES, PIPING AND PUMP STATION	CY	6870.68
448-73	PUMP STATION DRAINAGE		
	FURNISH AND INSTALL PUMPS; FL	EA	4.00
	FURNISH AND INSTALL CONTECH TREATMENT UNIT; MODEL CD55678	EA	1.00
	ELECTRICAL (INCL VFD, ELECT SERVICE, ETC.)	LS	1.00
125-3	SELECT BEDDING MATERIAL	CY	395.00
1050-51-224	UTILITY PIPE-DUCTILE IRON/CAST IRON, FURNISH & INSTALL, WATER/SEWER, 24"	LF	578.00
1050-51-230	UTILITY PIPE-DUCTILE IRON/CAST IRON, FURNISH & INSTALL, WATER/SEWER, 36"	LF	456.00
1050-51-230-48	UTILITY PIPE-DUCTILE IRON/CAST IRON, FURNISH & INSTALL, WATER/SEWER, 48"	LF	477.00
1080-29-124	UTILITY FIXTURE, MECHANICAL JOINT RESTRAINT, FURNISH & INSTALL, 24"	EA	30.00
1080-11-509	UTILITY FIXTURES, F&I, 20-49.9", MECHANICAL JOINT RESTRAINT	EA	18.00
1055-51-124	UTILITY FITTINGS, DUCTILE IRON/CAST IRON, FURNISH AND INSTALL ELBOW, 24"	EA	14.00
1055-51-136	UTILITY FITTINGS, DUCTILE IRON/CAST IRON, FURNISH AND INSTALL ELBOW, 36"	EA	4.00
1055-51-148	UTILITY FITTINGS, DUCTILE IRON/CAST IRON, FURNISH AND INSTALL ELBOW, 48"	EA	5.00
1055-11-425	UTILITY FITTING, F&I, DI/CI, TEE, 20-49.9"	EA	12.00
1055-51-524	UTILITY FITTINGS, DUCTILE IRON/CAST IRON, FURNISH & INSTALL, CAP/PLUG, 24"	EA	1.00
1055-11-435	UTILITY FITTINGS, F&I, DI/CI, REDUCER, 20 - 49.9"	EA	3.00
1080-24-124	UTILITY FIXTURE, VALVE ASSEMBLY, FURNISH AND INSTALL, 24" FOR GATE AND SWING VALVES	EA	20.00

PAY ITEM NO.	ITEM DESCRIPTION	UNIT	QUANTITY
1080-24-102	UTILITY FIXTURE, VALVE ASSEMBLY, FURNISH AND INSTALL, 2"	EA	2.00
1050-16-002	UTILITY PIPE, REMOVE & DISPOSE, 2-4.9"	LF	300.00
425-15-41	INLETS, OT BOT, TYPE D <10"	EA	34.00
425-15-42	INLETS, OT BOT, TYPE D >10"	EA	4.00
425-2-71	MANHOLES, J-J <10"	EA	16.00
425-2-72	MANHOLES, J-J >10"	EA	4.00
430-173-115	PIPE CULVERT, OPTIONAL MATERIAL ROUND, 15" SD	LF	30.00
430-173-118	PIPE CULVERT, OPTIONAL MATERIAL ROUND, 18" SD	LF	1365.00
430-173-124	PIPE CULVERT, OPTIONAL MATERIAL ROUND, 24" SD	LF	1426.00
430-173-136	PIPE CULVERT, OPTIONAL MATERIAL ROUND, 36" SD	LF	151.00
	FURNISH AND INSTALL INJECTION WELLS AND ANCILLARY EQUIPMENT (EXCEPT GATE VALVES)	LS	12.00
400-4-25	SUPPORT OF EXCAVATION-COFFERDAM	LS	1.00
400-4-25	CONCRETE-PUMP STATION	CY	269.40
415-1-6	MISCELLANEOUS STEEL-PUMP STATION	LB	71130.81
580-1-1	LANDSCAPE COMPLETE - SMALL PLANTS	EA	88.00
580-1-2	LANDSCAPE COMPLETE - LARGE PLANTS	EA	20.00

PAY ITEMS NOTES:

- PAY ITEM MEASUREMENTS ARE PER FOOT STANDARD SPECIFICATIONS.
 - 286-1: INCLUDES COST OF 439.20 SY GRAVEL DRIVEWAYS 43.78 SY ASPHALT DRIVEWAYS
 - 448-73: INCLUDES STRUCTURAL, ELECTRICAL AND ANCILLARY EQUIPMENT
- * REFER TO DETAIL ON SHEET PS-8A

REVISIONS

DATE	DESCRIPTION	DATE	DESCRIPTION

WERNER REINEFELD, P.E.
P.E. LICENSE NUMBER 63042
WSP USA, 7650 CORPORATE CENTER DRIVE,
SUITE 300, MIAMI, FLORIDA 33126
CERTIFICATE OF AUTHORIZATION 01462



**SEA LEVEL RISE ROADWAY AND DRAINAGE PILOT PROJECT
SANDS SUBDIVISION - BIG PINE KEY
MONROE COUNTY - DEPARTMENT OF ENGINEERING**

SHEET NO.

SQ-1B

SUMMARY OF PAY ITEMS