



St. Johns River

Water Management District

Ann B. Shortelle, Ph.D., Executive Director

525 Community College Parkway S.E. • Palm Bay, FL 32909 • 321-984-4940
On the internet at www.sjrwmd.com.

DATE: June 27, 2018
TO: Prospective Respondents
FROM: Amy Lucey, Contracts Administrator
SUBJECT: Addendum #1 to Invitation for Bids # 33203, 96B Rehabilitation

As a result of the Mandatory Pre-Bid meeting held on June 19, 2018, the following clarifications/changes are provided for your information. Please make all appropriate changes to your bid documents. Note: changes are reflected with original language shown with strike-through and new language is underlined.

- Q1: What is the location of the borrow material?
A1: Borrow material is available from the south side of the C-54 approximately 0.5 mile east of S-96. Borrow material from the north side of C-54 is not available.
- Q2: Where is the crane staging area?
A2: The contractor may stage a crane from the levee north of the structure (L-74E). If this area is used contractor shall not cut into levee. Contractor shall maintain access through this area, and may use the levee bench for bypass access. The area must be restored to its original condition when complete.
- Q3: Can the Contractor use the District's painting saddle?
A3: Yes, if the contractor chooses to sandblast and paint the gate onsite, the District's painting saddle is available for use. Contractor shall be responsible for bringing the saddle from the Districts rework site approximately 9 miles east of the S-96B.
- Page 53, Statement of Work, Task Identification, shall add the following paragraph:
36. Concrete Bridge Approach Slabs
Construct cast-in-place reinforced concrete approach slabs as detailed on the drawings.
 - Page 54, Statement of Work, Task Identification Paragraph, 37 shall revise water level elevation to read as follows:
37.38. Daily Overflow Impact Fee
This item represents the maximum daily fee that Contractor will be allowed to charge the District (on a daily basis), in the event that water levels exceed elevation ~~25.1~~ 26.0 ft NGVD.
 - Page 54, Statement of Work, Timeframes & Deliverables, shall revise the date the 100' cofferdam opening may be closed to read as follows:

GOVERNING BOARD

John A. Miklos, CHAIRMAN
ORLANDO

Fred N. Roberts Jr., VICE CHAIRMAN
OCALA

Chuck Drake, SECRETARY
ORLANDO

Ron Howse, TREASURER
COCOA

Douglas C. Bournique
VERO BEACH

Douglas Burnett
ST. AUGUSTINE

Susan Dolan
SANFORD

Janet Price
FERNANDINA BEACH

2. Contractor shall maintain a minimum 100' opening of the cofferdam upstream and downstream of the structure before November ~~30~~ 1, 2018 and after April 30, 2019. Gates shall be operational before November ~~30~~ 1, 2018 and after April 30, 2019

4. Page 13, Cost Schedule. Replace with the revised Cost Schedule (Addendum # 1), as attached.

Additional Information:

96B Approach Slab Detail

Pre-bid Meeting Recording – separate file

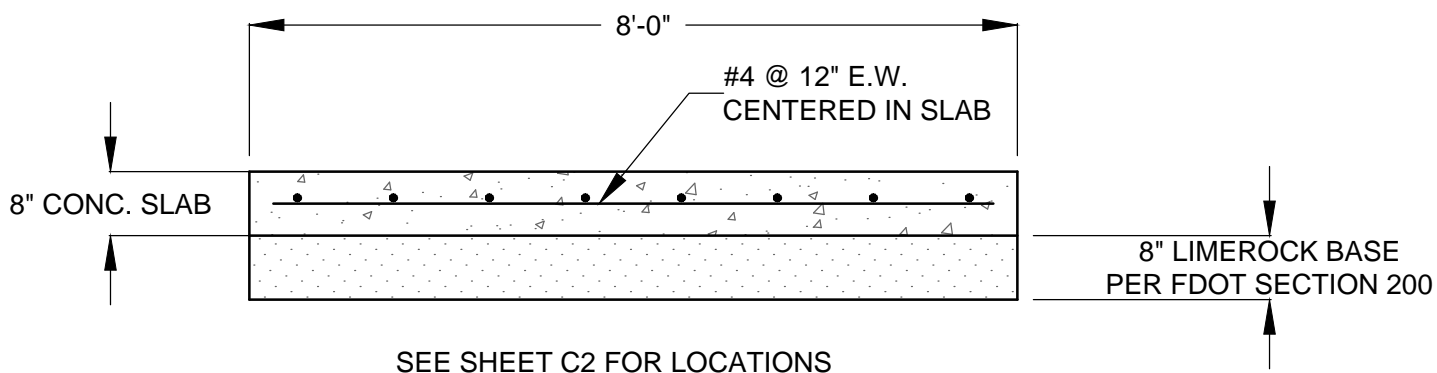
NOTE: The Bid Opening remains 2:00 p.m., Tuesday, July 10, 2018

Please acknowledge receipt of this Addendum on the **BID** FORM provided in the bid package.

If you have any questions, please e-mail me at alucey@sjrwmd.com.

COST SCHEDULE S-96B REHABILITATION					
ITEM NO.	DESCRIPTION AND ASSUMPTIONS	ESTIMATED QUANTITY	UNIT	UNIT PRICE	TOTAL AMOUNT
1	MOBILIZATION	1	LS		
2	EROSION/SEDIMENT CONTROL	1	LS		
3	TEMPORARY COFFERDAMS	1	LS		
4	PUMPING/DEWATERING	1	LS		
5	REMOVAL OF SEDIMENT AND DEBRIS	30	CY		
6	CONCRETE - HYDRODEMOLITION OF SURFACES	2,200	SF		
7	CONCRETE - PRESSURE WASHING SURFACES	1,200	SF		
8	CONCRETE - ISOLATED PATCHING	30	CF		
9	CONCRETE - REBAR REPAIR	50	LF		
10	CONCRETE - CRACK REPAIR	150	LF		
11	CONCRETE - SAWCUTTING	25	LF		
12	CONCRETE - ERODED SURFACE REPAIR	2,200	SF		
13	CONCRETE - SURFACE COATING	3,400	SF		
14	CAULK SERVICE BRIDGE EXPANSION JOINTS	40	LF		
15	PAINT EMBEDDED STEEL	50	SF		
16	SHEET PILING - EXCAVATE AND BACKFILL RIPRAP	1	LS		
17	SHEET PILING - WELDED CAP PLATES	40	EA		
18	SHEET PILING - ANCHOR PLATE CONNECTIONS	16	EA		
19	SHEET PILING - STEEL PLATE REPAIR	200	LBS		
20	SHEET PILING - PAINTING	5,800	SF		
21	EXCAVATION FOR NEW RIPRAP	1	LS		
22	NEW RIPRAP	300	TONS		
23	NEW BEDDING STONE	150	TONS		
24	BREAK GROUTED RIPRAP AND REGRADE	1	LS		
25	DEMO SAFETY BARRIER PILES	1	LS		
26	STEEL PILES FOR SAFETY BARRIERS	1	LS		
27	SALVAGE AND REINSTALL EXISTING SAFETY BARRIER	1	LS		
28	NEW DEBRIS BARRIERS	1	LS		
29	STAFF GAGES AND GATE POSITION GUIDES	1	LS		
30	FENCE DEMOLITION	320	LF		
31	NEW ALUMINUM FENCE	80	LF		
32	HANDRAIL DEMOLITION	192	LF		
33	NEW ALUMINUM HANDRAIL	190	LF		
34	GATE REHABILITATION	1	LS		
	NEW GATE COLLARS (IF REQUIRED)	1	EA		
	WHEELS - TURNING DOWN AND BANDING (IF REQ'D)	1	EA		
	NEW AXLES (IF REQUIRED)	1	EA		
35	WRI PLATFORM DEMOLISH AND REPLACE	1	LS		
36	CONCRETE BRIDGE APPROACH SLABS	1	LS		
37	SITE CLEANUP AND DEMOBILIZATION	1	LS		
38	DAILY OVERFLOW IMPACT FEE	10	DAYS		
39	SUPPLEMENTAL WORK ALLOWANCE				\$100,000
TOTAL COST					

Cost schedule continued on the next page.



S7
5

8'x13'-8" CONCRETE APPROACH APRON (2 REQ'D)

SCALE: 1/2" = 1'-0"

8' x 13'-8" CONCRETE APPROACH APRON (2 REQ'D)

SCALE: 1/2" = 1'-0"