



Motor: CAT C15

RPM: 1800

Machine: [Unit #1 Motor](#) ACCEPTABLE

NDE = Non Drive End DE = Drive End

<b>ACCEPTABLE</b> New Machine Condition	<b>WARNING</b> Unlimited long-term operation allowed	<b>ALERT</b> Short-term operation allowed	<b>FAULT</b> Vibration will cause damage
--------------------------------------------	---------------------------------------------------------	----------------------------------------------	---------------------------------------------

Diesel #1					
Location	Schedule Entry	Type	Latest	Units	Date
NDE- Vertical	<a href="#">Vel Spec/Wfm 16 Orders "Engine set"</a>	Overall	9.114	mm/s RMS	7/11/2018
NDE- Horizontal	<a href="#">Vel Spec/Wfm 16 Orders "Engine set"</a>	Overall	6.188	mm/s RMS	7/11/2018
NDE- Axial	<a href="#">Vel Spec/Wfm 16 Orders "Engine set"</a>	Overall	8.446	mm/s RMS	7/11/2018
DE- Vertical	<a href="#">Vel Spec/Wfm 16 Orders "Engine set"</a>	Overall	9.813	mm/s RMS	7/11/2018
DE- Horizontal	<a href="#">Vel Spec/Wfm 16 Orders "Engine set"</a>	Overall	11.07	mm/s RMS	7/11/2018
DE- Axial	<a href="#">Vel Spec/Wfm 16 Orders "Engine set"</a>	Overall	11.2	mm/s RMS	7/11/2018

**Result Statement:** Motor is operating properly.

**Recommendation:** No action needed at this time.





**Gear: De'Ran**

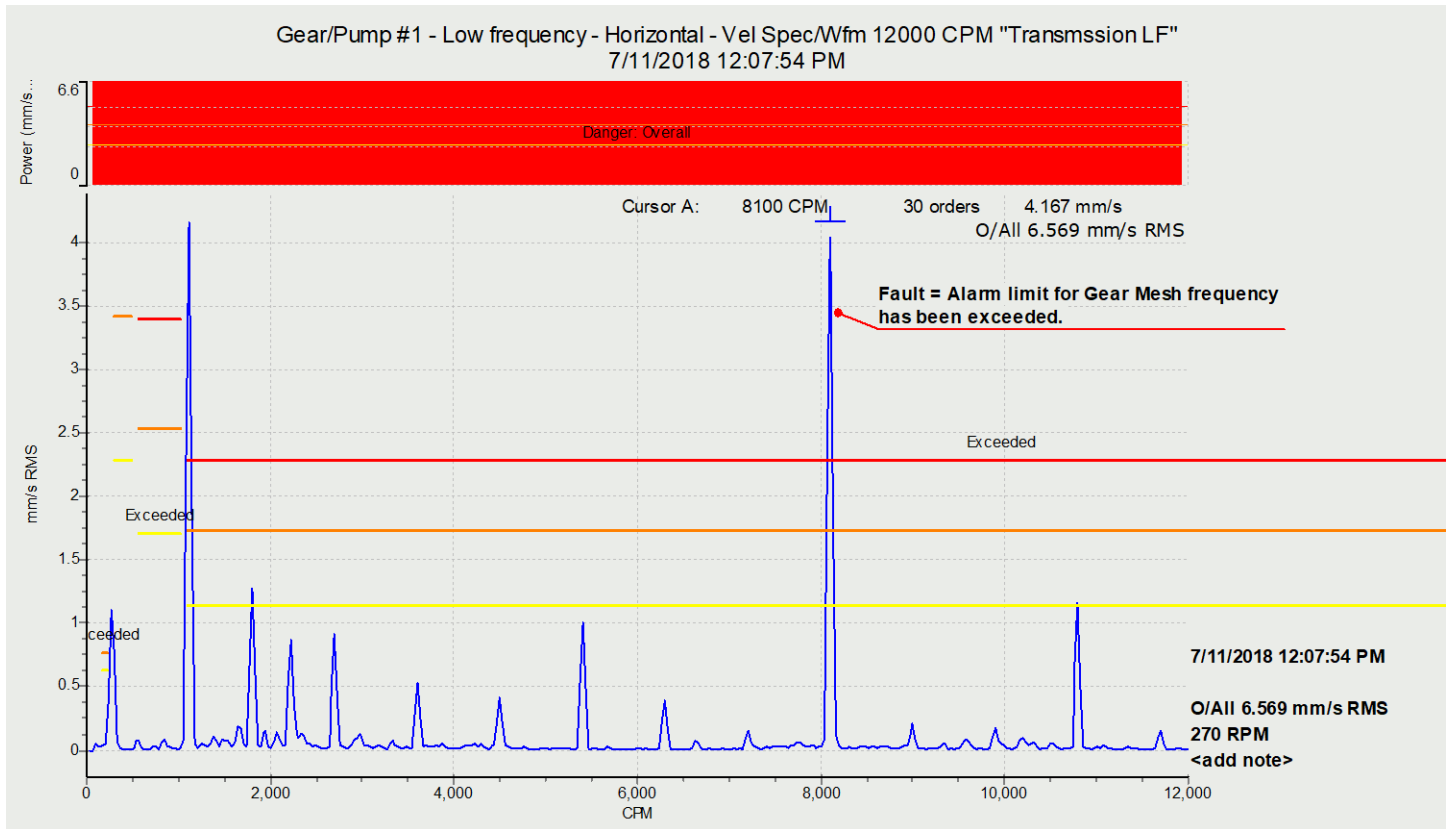
**Model: M30A Ratio: 6.5:1 Output RPM: 270**

**Pump: Morrison Model: VPL-60-60-04 RPM: 270**

Machine: <a href="#">Unit #1 Gear</a>	Fault
---------------------------------------	-------

<b>ACCEPTABLE</b> New Machine Condition	<b>WARNING</b> Unlimited long-term operation allowed	<b>ALERT</b> Short-term operation allowed	<b>FAULT</b> Vibration will cause damage
--------------------------------------------	---------------------------------------------------------	----------------------------------------------	---------------------------------------------

Gear/Pump #1					
Location	Schedule Entry	Type	Latest	Units	Date
Input Shaft- Vertical	<a href="#">Vel 6Pack 150 Orders "Transmission HF"</a>	Overall	3.047	mm/s RMS	7/11/2018
Input Shaft- Horizontal	<a href="#">Vel 6Pack 100 Orders "Transmission HF"</a>	Overall	7.01	mm/s RMS	7/11/2018
Input Shaft- Axial	<a href="#">Vel 6Pack 100 Orders "Transmission HF"</a>	Overall	5.033	mm/s RMS	7/11/2018
Output Shaft- Vertical	<a href="#">Vel Spec/Wfm 12000 CPM "Transmssion LF"</a>	Overall	3.973	mm/s RMS	7/11/2018
Output Shaft- Horizontal	<a href="#">Vel Spec/Wfm 12000 CPM "Transmssion LF"</a>	Overall	6.569	mm/s RMS	7/11/2018
Output Shaft- Axial	<a href="#">Vel Spec/Wfm 12000 CPM "Transmssion LF"</a>	Overall	3.335	mm/s RMS	7/11/2018
Pump - Horizontal	<a href="#">Vel Spec 180000 CPM</a>	Overall	4.746	mm/s RMS	7/11/2018
Pump - Vertical	<a href="#">Vel Spec 180000 CPM</a>	Overall	6.229	mm/s RMS	7/11/2018



**Result Statement:** The "Fault" level for gear mesh frequency has been exceeded.

**Recommendation:** Gear to engine alignment should be checked. Obstruction of the pump impeller may be causing this high gear mesh frequency vibration.





Motor: CAT C15

RPM: 1800

Machine: [Unit #2 Motor](#) ACCEPTABLE

NDE = Non Drive End DE = Drive End

ACCEPTABLE New Machine Condition	WARNING Unlimited long-term operation allowed	ALERT Short-term operation allowed	FAULT Vibration will cause damage
-------------------------------------	--------------------------------------------------	---------------------------------------	--------------------------------------

Diesel #2					
Location	Schedule Entry	Type	Latest	Units	Date
NDE- Vertical	<a href="#">Vel Spec/Wfm 16 Orders "Engine set"</a>	Overall	9.114	mm/s RMS	7/11/2018
NDE- Horizontal	<a href="#">Vel Spec/Wfm 16 Orders "Engine set"</a>	Overall	6.188	mm/s RMS	7/11/2018
NDE- Axial	<a href="#">Vel Spec/Wfm 16 Orders "Engine set"</a>	Overall	8.446	mm/s RMS	7/11/2018
DE- Vertical	<a href="#">Vel Spec/Wfm 16 Orders "Engine set"</a>	Overall	9.813	mm/s RMS	7/11/2018
DE- Horizontal	<a href="#">Vel Spec/Wfm 16 Orders "Engine set"</a>	Overall	11.07	mm/s RMS	7/11/2018
DE- Axial	<a href="#">Vel Spec/Wfm 16 Orders "Engine set"</a>	Overall	11.2	mm/s RMS	7/11/2018

**Result Statement:** Motor is operating properly.

**Recommendation:** No action needed at this time.





**Gear: De'Ran**

**Model: M30A Ratio: 6.5:1 Output RPM: 270**

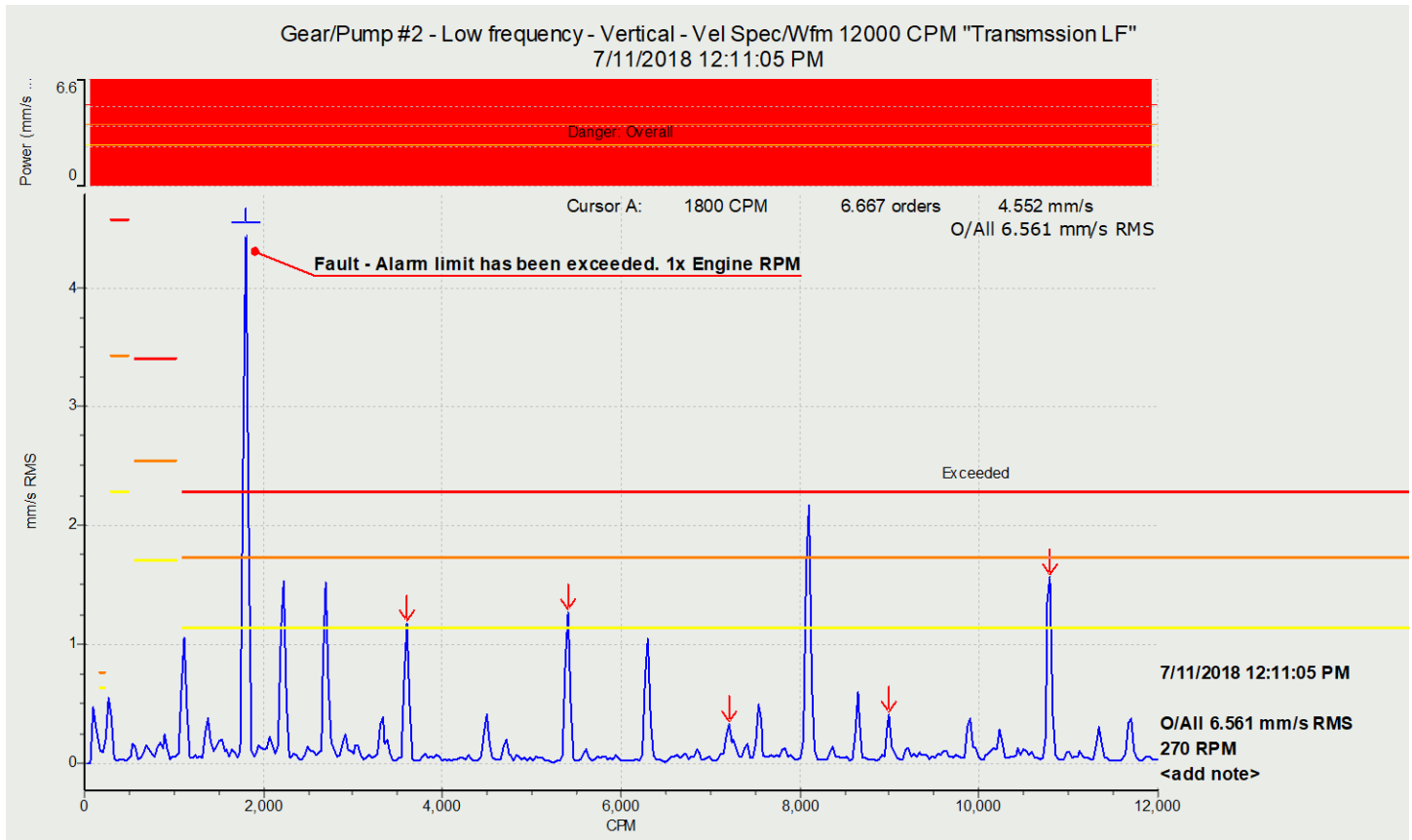
**Pump: Morrison Model: VPL-60-60-04 RPM: 270**

Machine: <a href="#">Unit #2 Gear</a>	FAULT
---------------------------------------	-------

ACCEPTABLE New Machine Condition	WARNING Unlimited long- term operation allowed	ALERT Short-term operation allowed	FAULT Vibration will cause damage
----------------------------------------	---------------------------------------------------------	------------------------------------------	-----------------------------------------

Gear/Pump #2					
Location	Schedule Entry	Type	Latest	Units	Date
Input Shaft- Vertical	<a href="#">Vel 6Pack 150 Orders "Transmission HF"</a>	Overall	2.933	mm/s RMS	7/11/2018
Input Shaft- Horizontal	<a href="#">Vel 6Pack 100 Orders "Transmission HF"</a>	Overall	11.79	mm/s RMS	7/11/2018
Input Shaft- Axial	<a href="#">Vel 6Pack 100 Orders "Transmission HF"</a>	Overall	6.275	mm/s RMS	7/11/2018
Output Shaft- Vertical	<a href="#">Vel Spec/Wfm 12000 CPM "Transmssion LF"</a>	Overall	6.561	mm/s RMS	7/11/2018
Output Shaft- Horizontal	<a href="#">Vel Spec/Wfm 12000 CPM "Transmssion LF"</a>	Overall	6.908	mm/s RMS	7/11/2018
Output Shaft- Axial	<a href="#">Vel Spec/Wfm 12000 CPM "Transmssion LF"</a>	Overall	2.902	mm/s RMS	7/11/2018
Pump - Horizontal	<a href="#">Vel Spec 180000 CPM</a>	Overall	5.387	mm/s RMS	7/11/2018
Pump - Vertical	<a href="#">Vel Spec 180000 CPM</a>	Overall	9.299	mm/s RMS	7/11/2018





**Result Statement:** The “Fault” level for 1x engine rpm frequency has been exceeded on the output end of the gear.

**Recommendation:** Gear to engine alignment should be checked. A spectrum peak at 1x engine rpm in the vertical is an indication of misalignment.



Motor: CAT C15

RPM: 1800

Machine: [Unit #3 Motor](#) ACCEPTABLE

NDE = Non Drive End DE = Drive End

ACCEPTABLE New Machine Condition	WARNING Unlimited long-term operation allowed	ALERT Short-term operation allowed	FAULT Vibration will cause damage
-------------------------------------	--------------------------------------------------	---------------------------------------	--------------------------------------

Diesel #3					
Location	Schedule Entry	Type	Latest	Units	Date
NDE- Vertical	<a href="#">Vel Spec/Wfm 16 Orders "Engine set"</a>	Overall	6.889	mm/s RMS	7/11/2018
NDE- Horizontal	<a href="#">Vel Spec/Wfm 16 Orders "Engine set"</a>	Overall	6.064	mm/s RMS	7/11/2018
NDE- Axial	<a href="#">Vel Spec/Wfm 16 Orders "Engine set"</a>	Overall	5.886	mm/s RMS	7/11/2018
DE- Vertical	<a href="#">Vel Spec/Wfm 16 Orders "Engine set"</a>	Overall	9.194	mm/s RMS	7/11/2018
DE- Horizontal	<a href="#">Vel Spec/Wfm 16 Orders "Engine set"</a>	Overall	7.722	mm/s RMS	7/11/2018
DE- Axial	<a href="#">Vel Spec/Wfm 16 Orders "Engine set"</a>	Overall	8.062	mm/s RMS	7/11/2018

**Result Statement:** Motor is operating properly.

**Recommendation:** No action needed at this time.





**Gear: De'Ran**

**Model: M30A Ratio: 6.5:1 Output RPM: 270**

**Pump: Morrison Model: VPL-60-60-04 RPM: 270**

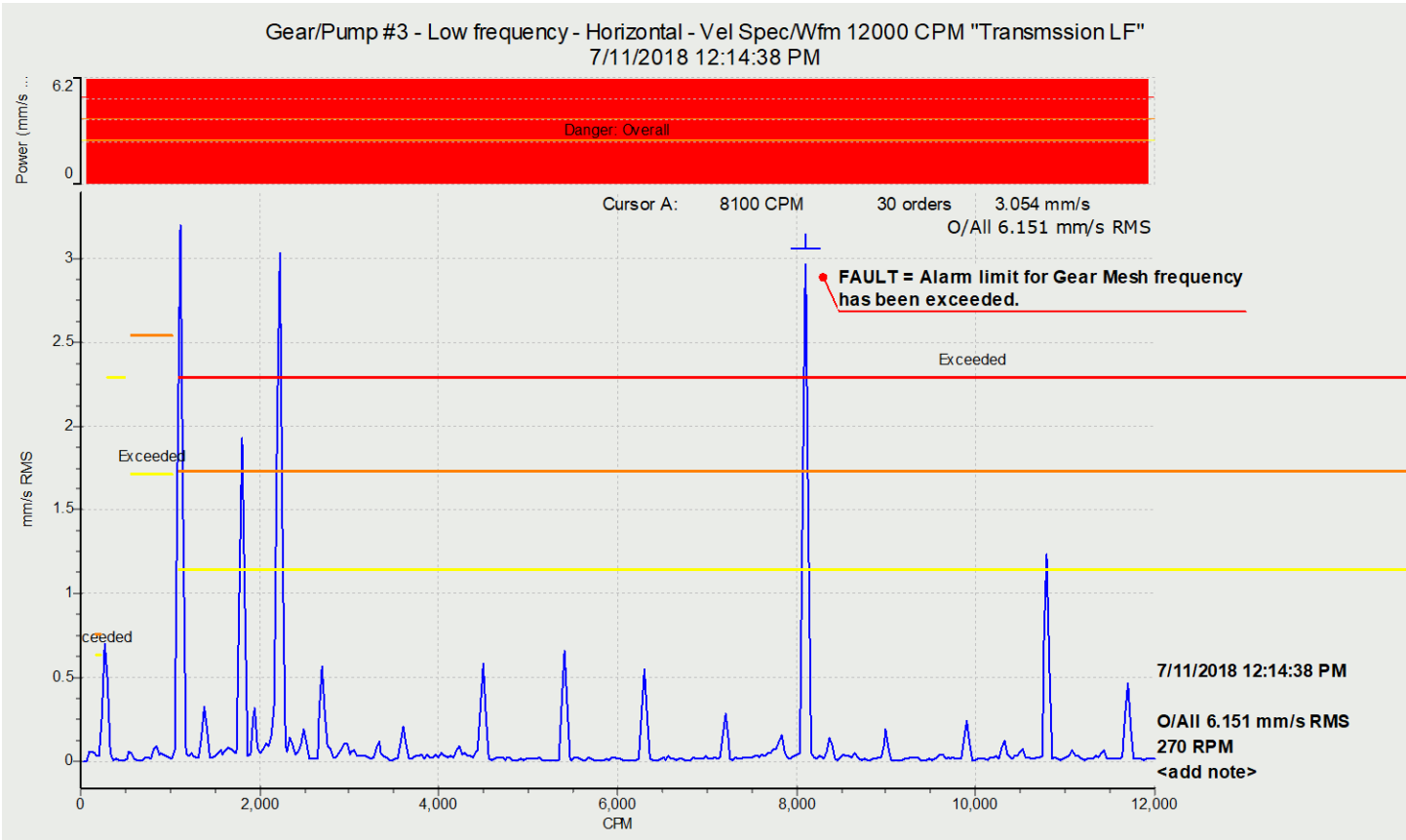
Machine: <a href="#">Unit #3 Gear</a>	FAULT
---------------------------------------	-------

ACCEPTABLE New Machine Condition	WARNING Unlimited long- term operation allowed	ALERT Short-term operation allowed	FAULT Vibration will cause damage
----------------------------------------	---------------------------------------------------------	------------------------------------------	-----------------------------------------

Gear/Pump #3					
Location	Schedule Entry	Type	Latest	Units	Date
High frequency - Vertical	<a href="#">Vel 6Pack 150 Orders "Transmission HF"</a>	Overall	3.933	mm/s RMS	7/11/2018
High frequency - Horizontal	<a href="#">Vel 6Pack 100 Orders "Transmission HF"</a>	Overall	8.445	mm/s RMS	7/11/2018
High frequency - Axial	<a href="#">Vel 6Pack 100 Orders "Transmission HF"</a>	Overall	7.15	mm/s RMS	7/11/2018
Low frequency - Vertical	<a href="#">Vel Spec/Wfm 12000 CPM "Transmssion LF"</a>	Overall	5.655	mm/s RMS	7/11/2018
Low frequency - Horizontal	<a href="#">Vel Spec/Wfm 12000 CPM "Transmssion LF"</a>	Overall	6.151	mm/s RMS	7/11/2018
Low frequency - Axial	<a href="#">Vel Spec/Wfm 12000 CPM "Transmssion LF"</a>	Overall	3.019	mm/s RMS	7/11/2018
Pump - Horizontal	<a href="#">Vel Spec 180000 CPM</a>	Overall	5.487	mm/s RMS	7/11/2018
Pump - Vertical	<a href="#">Vel Spec 180000 CPM</a>	Overall	5.196	mm/s RMS	7/11/2018







**Result Statement:** The "Fault" level for gear mesh frequency has been exceeded.

**Recommendation:** Gear to engine alignment should be checked. Obstruction of the pump impeller may be causing this high gear mesh frequency vibration.

