

*Request for Competitive Solicitations
Rebid Sands SLR Roadway and
Drainage Pilot Project, Big Pine Key,
Monroe County, Florida
RFP-484-0-2023/la
ADDENDUM NO.5
March 20, 2023*

The information contained in this Addendum modifies, supplements, or replaces information contained in the Project Manual and is hereby made a part of the Contract Documents. The following items are clarifications, deletions, revisions, changes, and modifications that change the Project Manual only in the amount and to the extent hereinafter specified and set forth in this ADDENDUM NO.5.

Note: Sands Rebid notice is also advertised in My Florida Marketplace - ITB-03791 – wherein it references Demandstar to obtain bid documents.

Questions, Responses and Clarifications:

Note: Bid sheets have been revised. Plan sheets G-8B, RD-4B, S1-B, SQ-1B, S-12B, TC-1B, TC-2B have been revised.

Q1: Addendum 2 added the ductbank shown on Sheet S-1B. Please provide the length of the ductbank, and the pay items for the concrete, reinforcing steel and conduit.

R1: Refer to revised bid sheet and plan sheet SQ-1B. Ductbank length is 26 LF per revised sheet S-1B. Pay item 630-2-11 has been added for 26 LF of conduit inclusive of concrete and reinforcing steel.

Q2: Addendum 3, Q3 asked for the depth of Footing F2, your answer referred to sheets S-8B & 10B which is for Footing F1 for the platforms. F2 is the foundation for the light poles. Please provide its depth.

R2: Refer to revised plan sheet S-12B. Footing thickness is 1ft per note on revised Sheet S-12B. Depth of 3ft is provided per detail P1 on sheet S-12B.

Q3: Addendum 3, Q2 gave the length & width of the transformer base. Please provide the depth.

R3: Refer to revised plan sheet S-1B – Minimum depth for transformer base is 8”.

Q4: Sheet G-2B Typical Section J says that it begins at Station 9+72.1. Traffic control plan sheet only shows widening beginning at Station 9+80. Should the widening begin at Sta 9+72?

R4: Refer to revised plan sheet TC-2B. Begin at 9+72. Stationing label has been revised on sheet TC-2B.

Q5: See previous question. Temporary traffic Control Plans sheet TC-2B shows a temporary widening in Pre-Stage 1 on Ave J from Sta 9+80 to Sta 12+21. In Stage 1A - we Mill, Resurface & Overbuild on Ave J from Sta 12+21 to Sta 12+50. Pre-Stage 2 shows Temp widening with gravel from Sta 9+80 to Sta 12+21 – the same as the asphalt. Believe that is not necessary, but is there no Temporary Widening from Sta 12+21 to Sta 12+50, or does the Temp Widening in Pre-Stage 1 go from 9+80 (or 9+72) to 12+50?

R5: Refer to revised plan sheet TC-1B - Temporary Widening in Pre-stage 1 begins at STA. 9+72 and ends at STA. 12+50. Temp. Construction/Work zones shown for Bidding purposes; contractor responsible for providing Staging and Temporary Construction plans as per Work Zone note 14 on revised sheet TC-1B.

Q6: Will any laydown area be provided for the Contractor?

R6: No. Contractor is responsible for obtaining appropriate staging area. Refer to plan sheet G-6B, G-8B, G-9B and TC-1B for staging notes.

Q7: Sheet RD4B at Station 17+80, there is a note “Exist 6” WM to be relocated See Detail Sheet G-5A”. There is no sheet G-5A. Please confirm that this relocation is like all others shown on G-4B.

R7: Refer to revised plan sheet RD-4B. Relocation shall be per detail sheet G-4B. Callout on sheet RD-4B has been revised.

Q8: The new roadway profile differs from the existing profile in several areas creating drop offs greater than 1.5”. Sheet TC-1B, Work Zone Special Notes # 7 states that this is to be handled by Index 102-600 which requires barrier or slopes with base material. There is not enough room in the roadway template for this. With the TCP being assigned to the Contractor, will the County allow a detour with one way traffic on one side of the road. Residents would always have access to their residences. This will reduce the cost of the project by allowing the paver to reduce his number of mobilizations by paving the side of the street at one time (this would not be allowed under Paving Note 1 on sheet G-8B). But with the drainage &

utility work required, the 3 day resurfacing requirement is not realistic & will greatly increase the cost of the project. Also Avenue G has several manholes that are to be installed in the traffic lane. This will require a road closure with detour while these are installed. Please confirm that a detour will be allowed in the Contractor's TCP with one way traffic on the affected roads at all times.

R8: Refer to revised sheet G-8B. Paving Note 1 on Sheet G-8B has been revised to allow deviations from the recommended paving schedule pending county approval. See revised sheet G-8B Note 5 - allowing access to driveways at all times. TTC Plans provided are for bidding purposes. Contractor is responsible for providing complete TTC plans for approval by the county per Sheet TC-1B Note 2 (Addendum No. 3). Detours are allowed and must be in compliance with FDOT and MUTCD standards and approved by the county as per Sheet TC-1B Note 1.

Q9: Is the Contractor required to provide the Owner any office facilities?

R9: No.

Q10: Bid item 425-5 Adjust Manhole has a unit of measure of SY. Should that be EA?

R10: Refer to revised Sheet SQ-1B and bid sheet. Bid item unit has been revised to EA.

Q11: How would any known/unknown utility adjustments that don't have pay items be paid for?

R11: All utility adjustments shall follow FDOT Standard Specifications descriptions for pay items as listed on Sheet SQ-1B Note 5. All utility adjustments will be determined through the contractor RFI process during construction.

All other items remain as called for in the documents. Deadline for questions March 24, 2023.

End of Addendum No. 5

Kevin Wilson

Kevin G. Wilson, P.E. for _____

Judy Clarke, Director of Engineering Services or designee.

Addendum 5 Revised -Monroe County Rebid Form: Sands Sea Level Rise Pilot Project

BID PROPOSAL

Item No.	Description	Unit	Quantity	Unit Price	Written Price	Line Total Price
101-1	MOBILIZATION	LS	1.00			
102-1	MAINTENANCE OF TRAFFIC	LS	1.00			
104-10-3	SEDIMENT BARRIER (STRAW WATTLE 9")	LF	3000			
104-18	INLET PROTECTION	EA	30.00			
110-1-1	CLEARING & DEGRUBBING	AC	1.18			
120-1A	REGULAR EXCAVATION – Roadway	CY	1630.00			
120-6	EMBANKMENT	CY	50.00			
160-4	STABILIZATION TYPE B	SY	3526.92			
285-704	OPTIONAL BASE GROUP 04 - ASPHALT BASE (TYPE B-12.5)	SY	3526.92			
286-1	TURNOUT CONSTRUCTION (ASPHALT)	SY	43.78			
327-70-1	MILLING+OVERLAY EXIST ASPH PAVT, 1" AVG DEPTH	SY	4519.80			
334-1-11	SUPERPAVE ASPHALTIC CONC, TRAFFIC A	TN	714.14			
530-74	BEDDING STONE (NO. 57 STONE)	TN	266.37			
570-1-2	PERFORMANCE TURF, SOD	SY	2777.11			
700-1-60	SINGLE POST SIGN, RELOCATE	AS	14.00			
706-3	RETRO-REFLECTIVE PAVEMENT MARKERS	EA	72.00			

Addendum 5 Revised Monroe County Rebid Form: Sands Sea Level Rise Pilot Project

BID PROPOSAL

Item No.	Description	Unit	Quantity	Unit Price	Written Price	Line Total Price
711-11-125	THERMOPLASTIC, STANDARD, WHITE, SOLID 24"	LF	194.06			
711-16-201	THERMOPLASTIC, STANDARD-OTHER SURFACES, YELLOW, SOLID, 6"	GM	0.06			
711-16-231	THERMOPLASTIC, STANDARD-OTHER SURFACES, YELLOW, SKIP, 6"	GM	0.25			
1050-16-003	UTILITY PIPE- REMOVE & DISPOSE, 5-7.9"	LF	420.00			
1050-51-206	6" WM DI PIPE FURNISH & INSTALL	LF	420.00			
425-5	ADJUST MANHOLE (UTILITIES) (TOP ADJUSTMENT)	EA	2.00			
448-73-2	FURNISH AND INSTALL PUMPS: FLYGT MODEL LL3602/845	EA	4.00			
448-73-3	FURNISH AND INSTALL CONTECH TREATMENT UNIT: MODEL CDS5678	EA	1.00			
448-73-4	ELECTRICAL (INCL VFD, ELECT SERVICE, ETC.)	LS	1.00			
125-3	SELECT BEDDING MATERIAL	CY	395.00			
1050-51-224	UTILITY PIPE-DUCTILE IRON/CAST IRON, FURNISH & INSTALL, WATER/SEWER, 24"	LF	597.00			
1050-51-230-36	UTILITY PIPE-DUCTILE IRON/CAST IRON, FURNISH & INSTALL, WATER/SEWER, 36"	LF	496.00			

Addendum 5 Revised Monroe County Rebid Form: Sands Sea Level Rise Pilot Project

BID PROPOSAL

Item No.	Description	Unit	Quantity	Unit Price	Written Price	Line Total Price
1050-51-230-48	UTILITY PIPE-DUCTILE IRON/CAST IRON, FURNISH & INSTALL, WATER/SEWER, 48"	LF	477.00			
1080-29-124	UTILITY FIXTURE, MECHANICAL JOINT RESTRAINT, FURNISH & INSTALL, 24"	EA	30.00			
1080-11-509	UTILITY FIXTURES, F&I, 20-49.9", MECHANICAL JOINT RESTRAINT	EA	18.00			
1055 51-124	UTILITY FITTINGS, DUCTILE IRON/CAST IRON, FURNISH AND INSTALL ELBOW, 24"	EA	15.00			
1055 51-136	UTILITY FITTINGS, DUCTILE IRON/CAST IRON, FURNISH AND INSTALL ELBOW, 36"	EA	5.00			
1055 51-148	UTILITY FITTINGS, DUCTILE IRON/CAST IRON, FURNISH AND INSTALL ELBOW, 48"	EA	5.00			
1055-11-425	UTILITY FITTING, F&I, DI/CI, TEE, 20-49.9"	EA	15.00			
1055-51-524	UTILITY FITTINGS, DUCTILE IRON/CAST IRON, FURNISH & INSTALL, CAP/PLUG, 24"	EA	1.00			
1055-11-435	UTILITY FITTINGS, F&I, DI/CI, REDUCER, 20 - 49.9"	EA	7.00			
1080-24-124	UTILITY FIXTURE, VALVE ASSEMBLY, FURNISH AND INSTALL, 24" FOR GATE AND SWING VALVES	EA	20.00			
1080-24-102	UTILITY FIXTURE, VALVE ASSEMBLY, FURNISH AND INSTALL, 2"	EA	2.00			

Addendum 5 Revised Monroe County Rebid Form: Sands Sea Level Rise Pilot Project

BID PROPOSAL

Item No.	Description	Unit	Quantity	Unit Price	Written Price	Line Total Price
1050-16-002	UTILITY PIPE- REMOVE & DISPOSE, 2-4.9"	LF	100.00			
425-15-41	INLETS, DT BOT, TYPE D <10'	EA	30.00			
425-2-71	MANHOLES, J-7 <10'	EA	17.00			
425-2-72	MANHOLES, J-7 >10'	EA	4.00			
430-173-115	PIPE CULVERT, OPTIONAL MATERIAL ROUND, 15" SD	LF	30.00			
430-173-118	PIPE CULVERT, OPTIONAL MATERIAL ROUND, 18" SD	LF	1365.00			
430-173-124	PIPE CULVERT, OPTIONAL MATERIAL ROUND, 24" SD	LF	1426.00			
430-173-136	PIPE CULVERT, OPTIONAL MATERIAL ROUND, 36" SD	LF	151.00			
288- INJECTION WELLS	FURNISH AND INSTALL INJECTION WELLS AND ANCILLARY EQUIPMENT (EXCEPT GATE VALVES)	LS	12			
400-4-25	SUPPORT OF EXCAVATION-COFFERDAM	LS	1.00			
400-4-25	CONCRETE-PUMP STATION	CY	342.10			
415-1-6	MISCELLANEOUS STEEL-PUMP STATION	LB	71130.81			

Addendum 5 Revised Monroe County Rebid Form: Sands Sea Level Rise Pilot Project

Item No.	Description	Unit	Quantity	Unit Price	Written Price	Line Total Price
120-1B	REGULAR EXCAVATION, DRAINAGE STRUCTURES, PIPING AND PUMP STATION	CY	6870.68			
580-1-1	LANDSCAPE COMPLETE – SMALL PLANTS	EA	88.00			
580-1-2	LANDSCAPE COMPLETE – LARGE PLANTS	EA	20.00			
286-1	TURNOUT CONSTRUCTION GRAVEL	SY	439.20			
581-1-3	RELOCATE TREES-MULTI-TRUNK	EA	1			
425-15-42	INLETS-DT BOT, TYPE D> 10"	EA	6			
515-1-2	PIPE HANDRAIL - ALUMINUM	LF	256.00			
630-2-11	DUCT BANK – INCLUDING CONDUIT, CONCRETE AND REINFORCE – FURNISH & INSTALL, OPEN TRENCH	LF	26.00			
MC permit	Monroe County permit# 20101595 pass thru amount \$45,966.44 (awarded contractor to pick up and pay for)	LS	1	\$45,966.44	Forty-five thousand nine hundred sixty six dollars and forty four cents.	\$45,966.44

Grand Total Rebid Amount (includes permit amount above)

\$ _____

Company Name - Bidder _____

1

PAVING NOTES

- 1. RESURFACING OF MILLED AREAS RECOMMENDED TO BE COMPLETED WITHIN 3 CALENDAR DAYS OF MILLING OPERATION TO MINIMIZE POT HOLE DEVELOPMENT AND INCONVENIENCES TO MOTORING PUBLIC. DEVIATION FROM THIS SCHEDULE SHALL BE SUBMITTED TO MONROE COUNTY FOR APPROVAL.
- 2. UNLESS OTHERWISE INDICATED, ONLY ROADWAY LANES AFFECTED BY ACTUAL CONSTRUCTION OR DAMAGED BY CONSTRUCTION EQUIPMENT SHALL BE MILLED AND RESURFACED. LANES DAMAGED BY CONSTRUCTION EQUIPMENT OR BY THE IMPROPER OPERATION OF CONSTRUCTION EQUIPMENT SHALL BE RESTORED AT THE CONTRACTOR'S EXPENSE. ALL RESTORATION SHALL COMPLY WITH THE STANDARDS AND REQUIREMENTS OF FDOT AND MONROE COUNTY.
- 3. CONTRACTOR SHALL ADJUST ALL MANHOLE COVERS, UTILITY ACCESS BOXES, CATCH BASINS, VALVE BOXES TO BE FLUSH WITH FINISH GRADES.

1

- 4. CONTRACTOR SHALL POST SIGNS NOTIFYING RESIDENTS OF PAVING SCHEDULE DAYS AT LEAST 48 HOURS IN ADVANCE.
- 5. CONTRACTOR SHALL ENSURE THAT ACCESS TO DRIVEWAYS ARE MAINTAINED AT ALL TIMES DURING PAVING OPERATIONS.

GRADING NOTES

- 1. OSHA TRENCH SAFETY COMPLIANCE - THE CONTRACTOR SHALL UTILIZE TRENCH BOXES OR OTHER APPROVED MEANS TO COMPLY WITH THE FLORIDA TRENCH SAFETY ACT (FLORIDA STATUTE SECTIONS 553.60-553.63), AND THE OCCUPATIONAL SAFETY AND HEALTH ADMINISTRATION (OSHA) EXCAVATION SAFETY STANDARDS, 29 C.F.R.S. 1926.650 SUBPART P.
- 2. EXCESS EXCAVATED MATERIAL - EXCESS EXCAVATED MATERIAL SHALL BE DISPOSED OF IN A MANNER ACCEPTABLE AND AUTHORIZED BY JURISDICTIONAL AUTHORITIES. CONTRACTOR MUST COMPLY WITH APPLICABLE SECTIONS OF TECHNICAL SPECIFICATIONS.
- 3. CONSTRUCTION DEBRIS SHALL NOT BE BURIED OR LEFT ON SITE DURING OR AFTER CONSTRUCTION. ADVERSE IMPACTS TO PROPOSED WORK OR ALREADY CONSTRUCTED WORK BY DEBRIS MUST BE AVOIDED.

- 4. LANDSCAPED AREAS & OTHER PERVIOUS AREAS THAT DO NOT HAVE A DEFINED DRAINAGE COLLECTION SYSTEM SHALL BE GRADED TO ENSURE POSITIVE DRAINAGE.

MOT NOTES

- 1. TRAFFIC CONTROLS SHALL BE IN ACCORDANCE WITH THE CURRENT EDITION OF THE FDOT DESIGN STANDARDS (102-600 SERIES), THE 2022 FDOT STANDARD SPECIFICATIONS FOR ROAD AND BRIDGE CONSTRUCTION AND THE MANUAL ON UNIFORM TRAFFIC CONTROL DEVICES (2009 EDITION) AS MINIMUM CRITERIA.
- 2. THE POSTED SPEED LIMITS SHALL REMAIN AT ALL TIMES DURING CONSTRUCTION.
- 3. MAINTAIN ACCESS TO ALL PROPERTIES FOR EMERGENCY VEHICLES AND SOLID WASTE SERVICES.
- 4. MAINTAIN CLEAR DRIVEWAY ACCESS TO ALL PROPERTIES.
- 5. PROVIDE AND MAINTAIN ACCESS TO THE LOCAL TRAFFIC AND BUSINESSES AT ALL TIMES DURING CONSTRUCTION PER FDOT STANDARD INDEX 600.
- 6. THE MAINTENANCE OF TRAFFIC (MOT) PLANS FOR THE PROJECT IS THE SOLE RESPONSIBILITY OF THE CONTRACTOR. THE CONTRACTOR MUST PRODUCE HIS/HER OWN MOT PLANS & MUST HAVE SAID PLANS APPROVED BY OWNERS REPRESENTATIVE PRIOR TO CONSTRUCTION. RESIDENTS ACCESS TO THEIR HOMES AND ACCESS FOR EMERGENCY VEHICLES SHOULD BE PROVIDED AT ALL TIMES. THE COST ASSOCIATED WITH THIS EFFORT MUST BE REFLECTED IN THE BID. NO ADDITIONAL COMPENSATION WILL BE GRANTED BY THE COUNTY FOR MOT COSTS ASSOCIATED WITH THIS PROJECT AFTER PROJECT AWARD. MOT PLANS THAT IMPACT US-1 SHALL BE APPROVED BY FDOT.
- 7. MOT PLANS SHALL INCLUDE BUT NOT LIMITED TO MESSAGE BOARDS TO INFORM DRIVERS OF CONSTRUCTION ON ROADWAY & MAINTAINING CROSSING ACCESS, ETC. CONTRACTOR IS ALSO RESPONSIBLE FOR NOTIFYING ALL SCHOOLS & EMERGENCY SERVICES WITHIN THE VICINITY OF THE PROJECT LIMITS ABOUT THE CONSTRUCTION SCHEDULE.
- 8. ALL WORK SHALL BE PERFORMED DURING DAY TIME ONLY, 7A.M. TO 7P.M. EQUIPMENT, GENERATORS, AND OTHER HEAVY MACHINERY CAPABLE OF GENERATING LOUD NOISE SHALL NOT BE USED OR OPERATED BEFORE 8A.M. CONTRACTOR TO COORDINATE WITH COUNTY'S REPRESENTATIVE PRIOR TO BEGIN CONSTRUCTION.

ENVIRONMENTAL NOTES

- 1. GENERAL ENVIRONMENTAL NOTES:

THE CONTRACTOR SHALL REVIEW ENVIRONMENTAL REQUIREMENTS OF ANY PROPOSED STAGING AREAS WITH THE MONROE COUNTY PROJECT CEI REPRESENTATIVE AT LEAST SEVENTY TWO (72) HOURS PRIOR TO USE. STAGING AREAS ON PARCELS NEED TO BE APPROVED AND PERMITTED BY THE MONROE COUNTY BUILDING DEPARTMENT AT (305)-289-2501.

ANY MATERIAL TO BE STOCKPILED FOR PERIODS GREATER THAN 24 HOURS SHALL BE PROTECTED WITH APPROPRIATE EROSION CONTROL DEVICES, COST TO BE INCLUDED IN THE RELATED BID ITEM.

- 2. WETLANDS & OTHER SURFACE WATERS:

THE CONTRACTOR IS ADVISED THAT WETLAND AND OTHER SURFACE WATERS (NATURAL WATER BODIES AND SIMILAR OPEN OR PARTIALLY OPEN WATER AREAS, WATERS OF THE UNTIED STATES) ARE ADJACENT TO THE PROJECT. THE CONTRACTOR SHALL NOT IMPACT THESE WETLANDS OR PROTECTED OTHER SURFACE WATERS. WETLANDS CANNOT BE USED AS STAGING OR STOCKPILE AREAS.

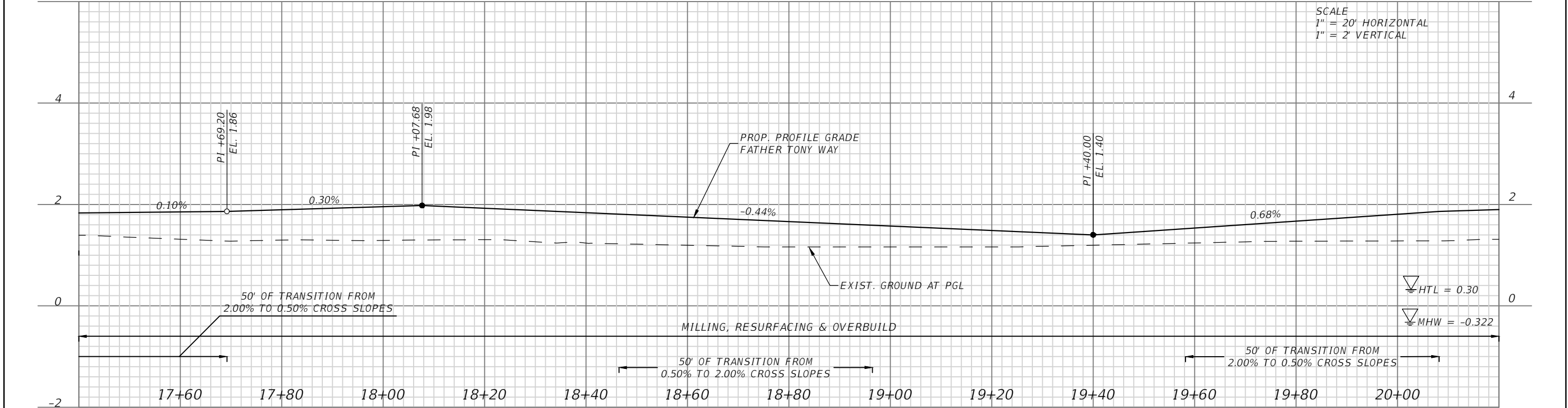
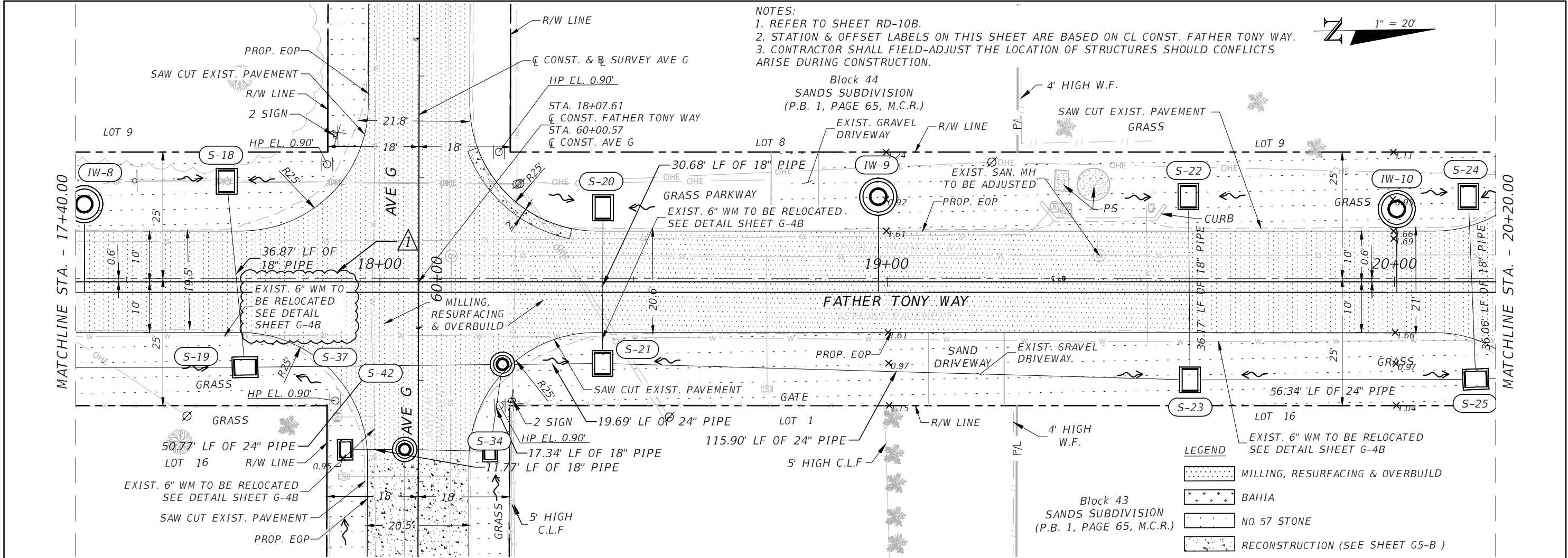
THE CONTRACTOR SHALL NOT IMPACT WETLANDS ADJACENT TO THE PROJECT CORRIDOR. PRIOR TO OR AT THE TIME OF THE PRE-CONSTRUCTION MEETING, THE CONTRACTOR SHALL MEET WITH THE PROJECT ENGINEER TO FIELD-VERIFY THE EXTENT AND BOUNDARY OF WETLAND VEGETATION ON SITE, STRAW WATTLES WILL BE INSTALLED AT CONSTRUCTION AREAS ADJACENT TO WETLANDS, AND MAINTAINED IN GOOD CONDITION AT ALL TIMES DURING CONSTRUCTION ACTIVITIES.

ANY MATERIAL INADVERTENTLY PLACED IN WETLANDS OR OTHER SURFACE WATERS SHALL BE REMOVED BY HAND. ANY ACCIDENTAL DAMAGE CAUSED TO PROTECTED/PRESERVED WETLANDS AS A RESULT OF THE CONTRACTOR'S ACTIVITIES SHALL IMMEDIATELY BE REPORTED TO THE PROJECT MANAGER AND PROJECT ENGINEER. THE CONTRACTOR SHALL BE RESPONSIBLE FOR APPROPRIATE REMEDIATION OF ANY SUCH DAMAGE IN ACCORDANCE WITH DIRECTIVES AND SPECIFICATIONS PROVIDED BY THE PROJECT MANAGER OR THE MANAGER'S DESIGNEE.

STRAW WATTLES SHALL NOT BE PLACED WITHIN THE LIMITS OF ANY WETLANDS OR OTHER SURFACE WATERS. IF HAY BALES ARE USED FOR EROSION CONTROL, PLACEMENT OF THESE BALES WITHIN WETLANDS SHOULD BE AVOIDED EXCEPT IN SITUATIONS WHERE LOCATION OF STAKED BALES IN WETLANDS IS ABSOLUTELY NECESSARY TO ADEQUATELY CONTROL EROSION AND TURBIDITY.

THIS PROJECT IS ADJACENT TO THE WATERS OF THE ATLANTIC OCEAN AND FLORIDA BAY, WHICH ARE DESIGNATED OUTSTANDING FLORIDA WATERS. NO DEGRADATION OF WATER QUALITY, INCREASED TURBIDITY IN THE WATER, AND/OR DISCHARGE OF ANY FOREIGN MATERIAL INTO THE WATER SHALL BE PERMITTED.

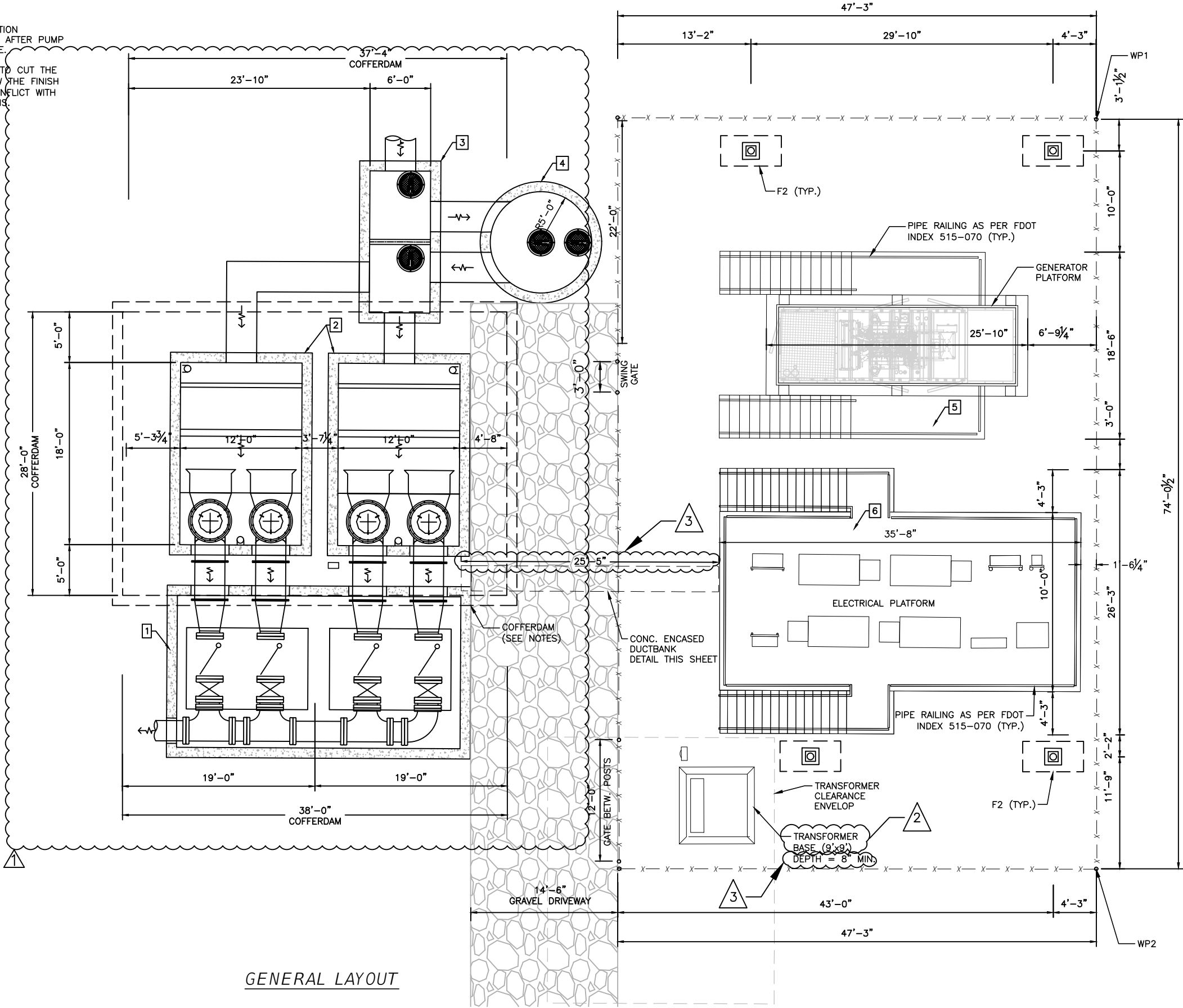
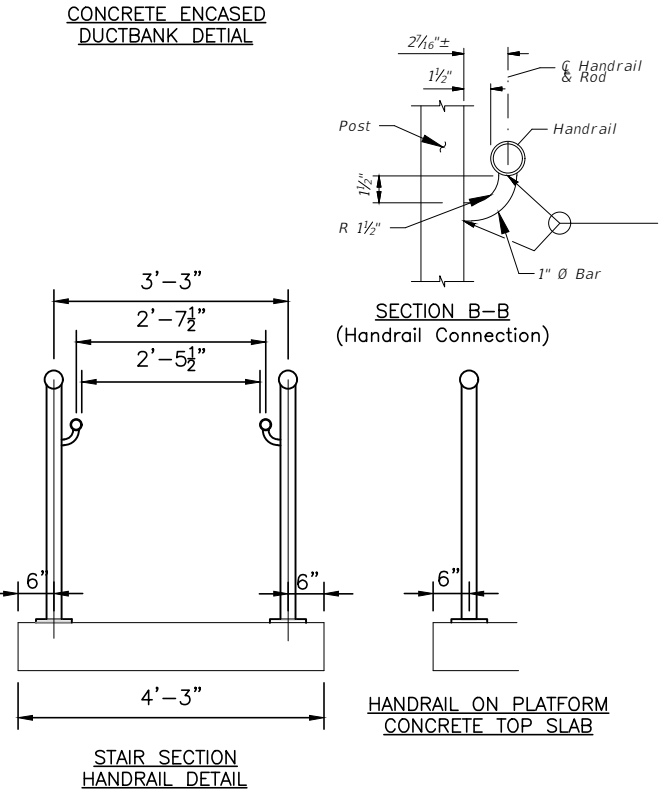
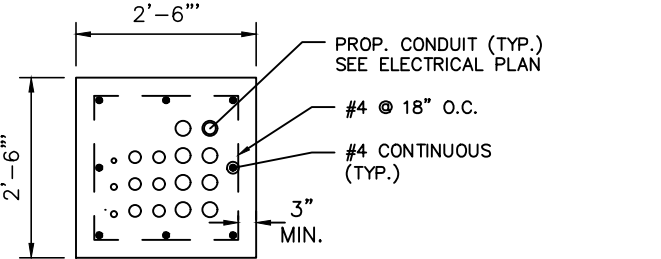
REVISIONS				WERNER REINEFELD, P.E. P.E. LICENSE NUMBER 63042 WSP USA, 7650 CORPORATE CENTER DRIVE, SUITE 300, MIAMI, FLORIDA 33126 CERTIFICATE OF AUTHORIZATION 01462			SEA LEVEL RISE ROADWAY AND DRAINAGE PILOT PROJECT SANDS SUBDIVISION - BIG PINE KEY MONROE COUNTY - DEPARTMENT OF ENGINEERING	SHEET NO.
DATE	DESCRIPTION	DATE	DESCRIPTION					G-8B
03/16/23	1. BID ADDENDUM #5						PROJECT NOTES	



REVISIONS				WERNER REINEFELD, P.E. P.E. LICENSE NUMBER 63042 WSP USA, 7650 CORPORATE CENTER DRIVE, SUITE 300, MIAMI, FLORIDA 33126 CERTIFICATE OF AUTHORIZATION 01462			SEA LEVEL RISE ROADWAY AND DRAINAGE PILOT PROJECT SANDS SUBDIVISION - BIG PINE KEY MONROE COUNTY - DEPARTMENT OF ENGINEERING	ROADWAY PLAN & PROFILE (FATHER TONY WAY)	SHEET NO. RD-4B
DATE	DESCRIPTION	DATE	DESCRIPTION						
03/16/23	1. BID ADDENDUM #5								

- NOTES:
1. INSTALL COFFERDAM FOR PUMP STATION CONSTRUCTION. REMOVE COFFERDAM AFTER PUMP STATION CONSTRUCTION IS COMPLETE.
 2. THE CONTRACTOR HAS THE OPTION TO CUT THE COFFERDAM SHEETPILE 2'-0" BELOW THE FINISH GRADE AS LONG AS IT'S NOT IN CONFLICT WITH PROPOSED STRUCTURES FOUNDATIONS.

STRUCTURE TOP ELEVATIONS			
1	VALVE BOX	3.20 FT NAVD	4.58 FT NGVD
2	WET WELL	3.20 FT NAVD	4.58 FT NGVD
3	INLET BOX	3.20 FT NAVD	4.58 FT NGVD
4	TREATMENT UNIT	3.20 FT NAVD	4.58 FT NGVD
5	GENERATOR PLATFORM	10.25 FT NAVD	11.63 FT NGVD
6	ELECTRICAL EQUIPMENT PLATFORM	10.25 FT NAVD	11.63 FT NGVD
NGVD'29 = NAVD'88 + 1.38'			



GENERAL LAYOUT

REVISIONS			
DATE	DESCRIPTION	DATE	DESCRIPTION
2/21/2023	1 BID COMMENTS		
3/01/2023	2 BID COMMENTS - ADDENDUM 3		
3/13/2023	3 BID COMMENTS - ADDENDUM 5		

FREDDY J. MENA, P.E.
P.E. LICENSE NUMBER 86701
WSP USA, 7650 CORPORATE CENTER DRIVE,
SUITE 300, MIAMI, FLORIDA 33126
CERTIFICATE OF AUTHORIZATION 01462



SEA LEVEL RISE ROADWAY AND DRAINAGE PILOT PROJECT
SANDS SUBDIVISION - BIG PINE KEY
MONROE COUNTY - DEPARTMENT OF ENGINEERING

PUMP STATION GENERAL LAYOUT

SHEET NO.

S-1B

MONROE COUNTY
SEA LEVEL RISE ROADWAY AND
DRAINAGE PILOT PROJECT - BIG PINE KEY
SUMMARY OF PAY ITEMS

PAY ITEM NO.	ITEM DESCRIPTION	UNIT	QUANTITY
101-1	MOBILIZATION	LS	1.00
102-1	MAINTENANCE OF TRAFFIC	LS	1.00
104-10-3	SEDIMENT BARRIER (STRAW WATTLE 9")	LF	3000
104-18	INLET PROTECTION	EA	30.00
110-1-1	CLEARING & GRUBBING	AC	1.18
120-1A	REGULAR EXCAVATION, ROADWAY	CY	1630.00
120-6	EMBANKEMENT	CY	50.00
160-4	STABILIZATION TYPE B	SY	3526.92
285-704	OPTIONAL BASE GROUP 04 - ASPHALT BASE (TYPE B-12.5)	SY	3526.92
286-1	TURNOUT CONSTRUCTION (ASPHALT)	SY	43.78
286-1	TURNOUT CONSTRUCTION (GRAVEL)	SY	439.2
327-70-1	MILLING EXIST ASPH PAVT, 1" AVG DEPTH	SY	4519.80
334-1-11	SUPERPAVE ASPHALTIC CONC, TRAFFIC A	TN	714.14
530-74	BEDDING STONE (NO. 57 STONE)	TN	266.37
570-1-2	PERFORMANCE TURF, 50D	SY	2777.11
700-1-60	SINGLE POST SIGN, RELOCATE	AS	14.00
706-3	RETRO-REFLECTIVE PAVEMENT MARKERS	EA	72.00
711-11-125	THERMOPLASTIC, STANDARD, WHITE, SOLID 24"	LF	194.06
711-16-201	THERMOPLASTIC, STANDARD-OTHER SURFACES, YELLOW, SOLID, 6"	GM	0.06
711-16-231	THERMOPLASTIC, STANDARD-OTHER SURFACES, YELLOW, SKIP, 6"	GM	0.25
0581-1-3	RELOCATE TREES AND PALMS, MULTI-TRUNK OR CLUSTERING	EA	1.0
10-50-16-003	UTILITY PIPE,REMOVE & DISPOSE, 5-7.9"	LF	420.00
1050-51-206	6" WM DI PIPE FURNISH & INSTALL	LF	420.00
425-5	ADJUST MANHOLE (UTILITIES) (TOP ADJUSTMENT)	EA	2.00
120-1B	REGULAR EXCAVATION, DRAINAGE STRUCTURES, PIPING AND PUMP STATION	CY	6870.68
448-73	PUMP STATION DRAINAGE		
	FURNISH AND INSTALL PUMPS: FL	EA	4.00
	FURNISH AND INSTALL CONTECH TREATMENT UNIT: MODEL CDS5678	EA	1.00
	ELECTRICAL (INCL VFD, ELECT SERVICE, ETC.)	LS	1.00
125-3	SELECT BEDDING MATERIAL	CY	395.00
1050-51-224	UTILITY PIPE-DUCTILE IRON/CAST IRON, FURNISH & INSTALL, WATER/SEWER, 24"	LF	597.00
1050-51-230	UTILITY PIPE-DUCTILE IRON/CAST IRON, FURNISH & INSTALL, WATER/SEWER, 36"	LF	496.00
1050-51-230-48	UTILITY PIPE-DUCTILE IRON/CAST IRON, FURNISH & INSTALL, WATER/SEWER, 48"	LF	477.00
1080-29-124	UTILITY FIXTURE, MECHANICAL JOINT RESTRAINT, FURNISH & INSTALL, 24"	EA	30.00
1080-11-509	UTILITY FIXTURES, F&I, 20-49.9", MECHANICAL JOINT RESTRAINT	EA	18.00
1055 51-124	UTILITY FITTINGS, DUCTILE IRON/CAST IRON, FURNISH AND INSTALL ELBOW, 24"	EA	15.00
1055 51-136	UTILITY FITTINGS, DUCTILE IRON/CAST IRON, FURNISH AND INSTALL ELBOW, 36"	EA	5.00
1055 51-148	UTILITY FITTINGS, DUCTILE IRON/CAST IRON, FURNISH AND INSTALL ELBOW, 48"	EA	5.00
1055-11-425	UTILITY FITTING,F&I,DI/CI,TEE,20-49.9"	EA	15.00
1055-51-524	UTILITY FITTINGS, DUCTILE IRON/CAST IRON, FURNISH & INSTALL, CAP/PLUG, 24"	EA	1.00
1055-11-435	UTILITY FITTINGS, F&I, DI/CI, REDUCER, 20 - 49.9"	EA	7.00
1080-24-124	UTILITY FIXTURE, VALVE ASSEMBLY, FURNISH AND INSTALL, 24" FOR GATE AND SWING VALVES	EA	20.00

PAY ITEM NO.	ITEM DESCRIPTION	UNIT	QUANTITY
1080-24-102	UTILITY FIXTURE, VALVE ASSEMBLY, FURNISH AND INSTALL, 2"	EA	2.00
1050-16-002	UTILITY PIPE,REMOVE & DISPOSE, 2-4.9"	LF	100.00
425-15-41	INLETS, DT BOT, TYPE D <10"	EA	30.00
425-15-42	INLETS, DT BOT, TYPE D >10"	EA	6.00
425-2-71	MANHOLES, J-7 <10"	EA	17.00
425-2-72	MANHOLES, J-7 >10"	EA	4.00
430-173-115	PIPE CULVERT, OPTIONAL MATERIAL ROUND, 15" SD	LF	30.00
430-173-118	PIPE CULVERT, OPTIONAL MATERIAL ROUND, 18" SD	LF	1365.00
430-173-124	PIPE CULVERT, OPTIONAL MATERIAL ROUND, 24" SD	LF	1426.00
430-173-136	PIPE CULVERT, OPTIONAL MATERIAL ROUND, 36" SD	LF	151.00
	FURNISH AND INSTALL INJECTION WELLS AND ANCILLARY EQUIPMENT (EXCEPT GATE VALVES)	LS	12.00
400-4-25	SUPPORT OF EXCAVATION-COFFERDAM	LS	1.00
400-4-25	CONCRETE-PUMP STATION	CY	342.1
415-1-6	MISCELLANEOUS STEEL-PUMP STATION	LB	71130.81
580-1-1	LANDSCAPE COMPLETE - SMALL PLANTS	EA	88.00
580-1-2	LANDSCAPE COMPLETE - LARGE PLANTS	EA	20.00
515-1-2	PIPE HANDRAIL - GUIDERAIL, ALUMINUM	LF	256.00
630-2-11	CONDUIT, FURNISH & INSTALL, OPEN TRENCH	LF	26.00

PAY ITEMS NOTES:

- PAY ITEM MEASUREMENTS ARE PER FDOT STANDARD SPECIFICATIONS.
- 286-1: INCLUDES COST OF
439.20 SY GRAVEL DRIVEWAYS
43.78 SY ASPHALT DRIVEWAYS

- 448-73: INCLUDES STRUCTURAL, ELECTRICAL AND ANCILLARY EQUIPMENT

- 630-2-11: INCLUDES CONCRETE & REINFORCING STEEL

- PAY ITEMS FOR UNFORESEEN UTILITY ADJUSTMENTS SHALL FOLLOW THE FOLLOWING FDOT STANDARD SPECIFICATIONS DESCRIPTIONS AS NECESSARY:

1050-15-004 TO 1050-61-130
1055-15 TO 1055-51-608
1060-11-211 TO 1060-32-2
1080-21-100 TO 1080-33-120

* REFER TO DETAIL ON SHEET PS-8A

REVISIONS

DATE	DESCRIPTION	DATE	DESCRIPTION
2/13/23	1. BID ADDENDUM #1		
2/22/23	2. BID ADDENDUM #2		
02/28/23	3. BID ADDENDUM #3		
03/02/23	4. BID ADDENDUM #4		
03/16/23	5. BID ADDENDUM #5		

WERNER REINEFELD, P.E.
P.E. LICENSE NUMBER 63042
WSP USA, 7650 CORPORATE CENTER DRIVE,
SUITE 300, MIAMI, FLORIDA 33126
CERTIFICATE OF AUTHORIZATION 01462

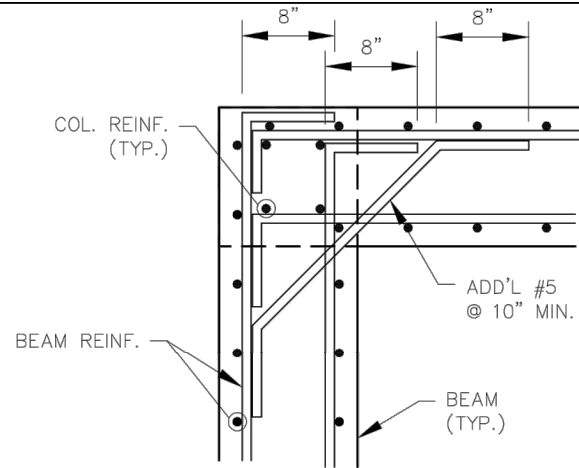


SEA LEVEL RISE ROADWAY AND DRAINAGE PILOT PROJECT
SANDS SUBDIVISION - BIG PINE KEY
MONROE COUNTY - DEPARTMENT OF ENGINEERING

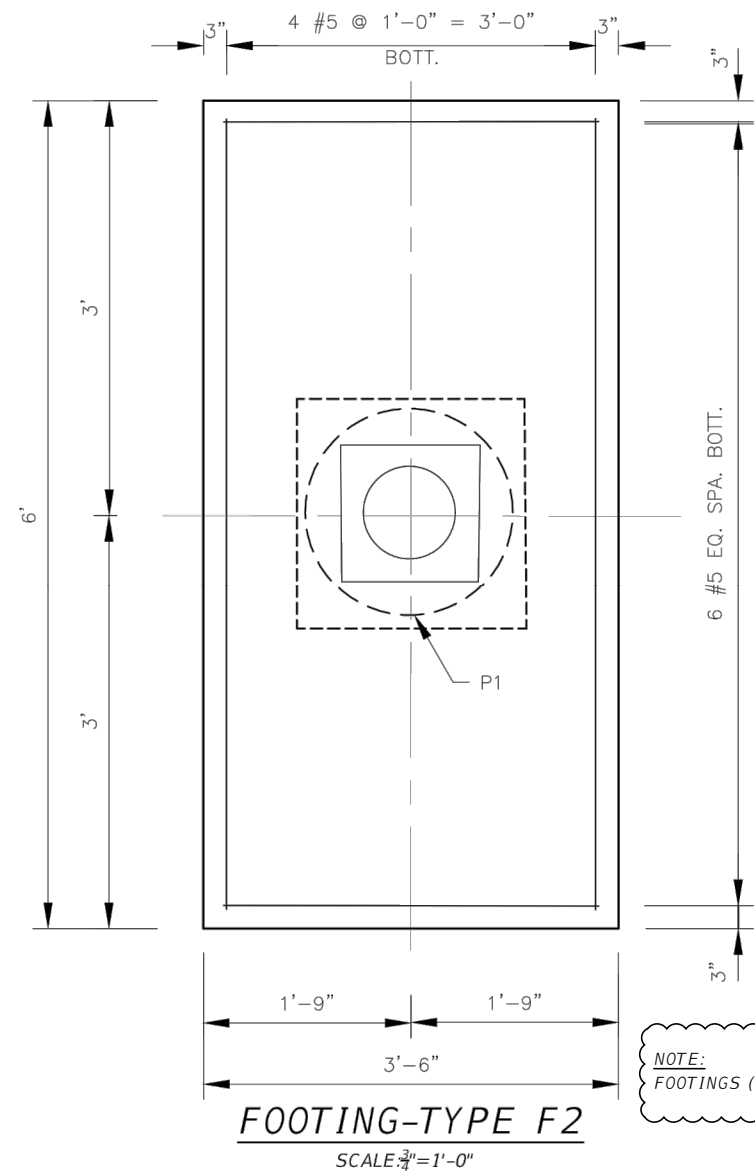
SUMMARY OF PAY ITEMS

SHEET NO.

SQ-1B

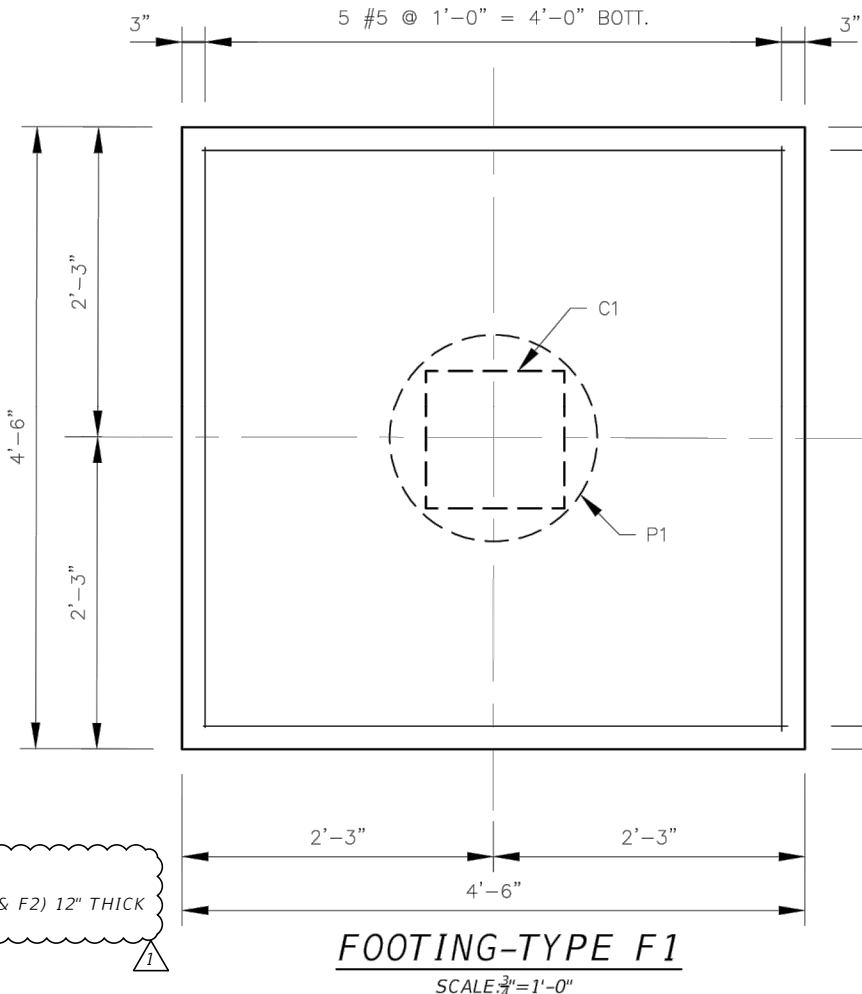


TYPICAL BEAM/COLUMN CORNER DETAIL
SCALE: $\frac{3}{4}$ "=1'-0"

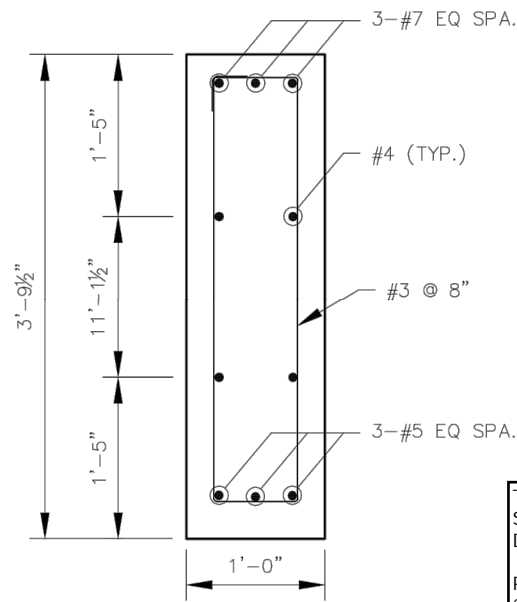


FOOTING-TYPE F2
SCALE: $\frac{3}{4}$ "=1'-0"

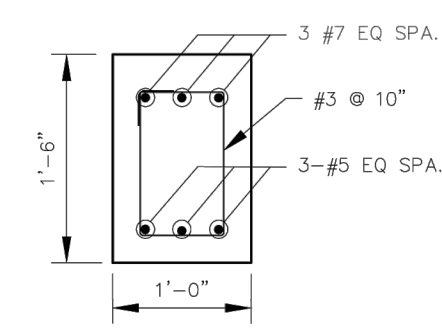
NOTE:
FOOTINGS (F1 & F2) 12" THICK



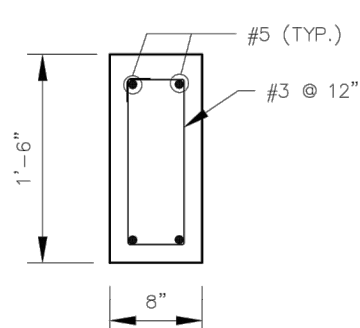
FOOTING-TYPE F1
SCALE: $\frac{3}{4}$ "=1'-0"



BEAM B5
SCALE: $\frac{3}{4}$ "=1'-0"



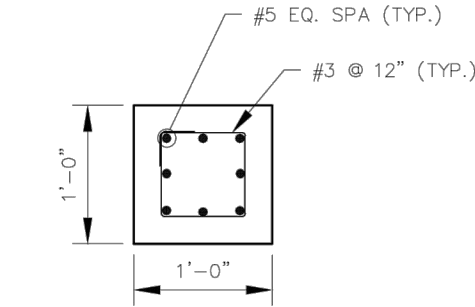
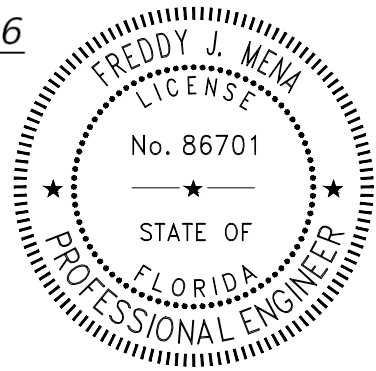
BEAM B1 THRU B4
SCALE: $\frac{3}{4}$ "=1'-0"



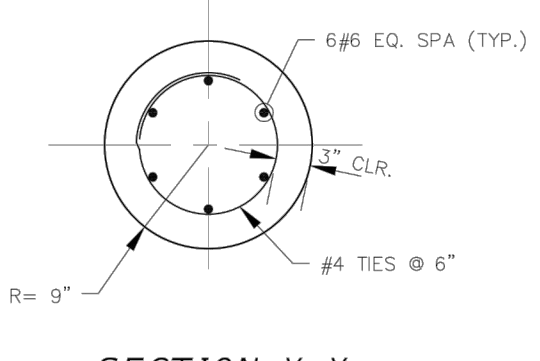
BEAM B6
SCALE: $\frac{3}{4}$ "=1'-0"

THIS ITEM HAS BEEN DIGITALLY SIGNED AND SEALED BY FREDDY J. MENA, P.E. ON THE DATE ADJACENT TO THE SEAL.

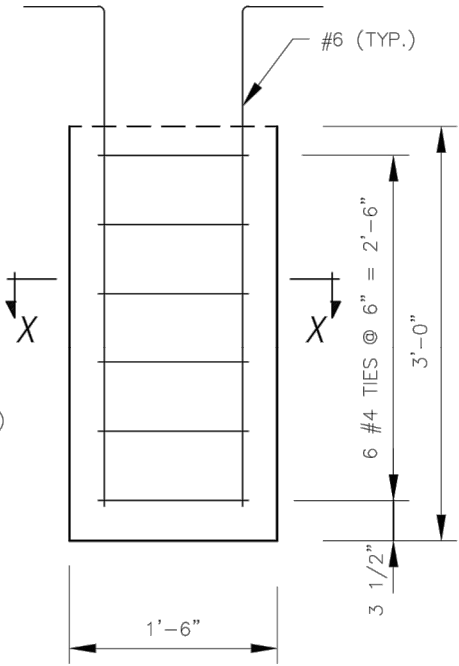
PRINTED COPIES OF THIS DOCUMENT ARE NOT CONSIDERED SIGNED AND SEALED AND THE SIGNATURE MUST BE VERIFIED ON ANY ELECTRONIC COPIES.





TYPICAL COLUMN C1
SCALE: $\frac{3}{4}$ "=1'-0"



SECTION X-X
SCALE: $\frac{3}{4}$ "=1'-0"



PILE P1
SCALE: $\frac{3}{4}$ "=1'-0"

R E V I S I O N S				FREDDY J. MENA, P.E. P.E. LICENSE NUMBER 86701 WSP USA, 7650 CORPORATE CENTER DRIVE, SUITE 300, MIAMI, FLORIDA 33126 CERTIFICATE OF AUTHORIZATION 01462			SEA LEVEL RISE ROADWAY AND DRAINAGE PILOT PROJECT SANDS SUBDIVISION - BIG PINE KEY MONROE COUNTY - DEPARTMENT OF ENGINEERING		SHEET NO.
DATE	DESCRIPTION	DATE	DESCRIPTION				PUMP STATION PLATFORM FOUNDATION SECTIONS AND DETAILS		S-12B
03/17/23	⚠ FOOTING THICKNESS								

Mena, Freddy

3/17/2023 2:14:24 PM

C:\bms\wsp-pb-us-pw-02\Freddy.mena@wsp.com\d0385992\Platform - Big Pine Key.dwg

TEMPORARY TRAFFIC CONTROL (TTC) GENERAL NOTES

1. ALL TTC SHALL BE IN COMPLIANCE WITH THE FLORIDA DEPARTMENT OF TRANSPORTATION STANDARD PLANS 2019-20 INDEX (102-600) AND MANUAL OF UNIFORM TRAFFIC CONTROL DEVICES STANDARDS (MUTCD) LATEST EDITION.
2. THE CONTRACTOR SHALL SUBMIT COMPLETE TTC PLANS FOR APPROVAL BY THE COUNTY. TTC PLANS SHALL BE SIGNED AND SEALED BY A PROFESSIONAL ENGINEER REGISTERED IN THE STATE OF FLORIDA AND SHALL BE CONSISTENT WITH STANDARD TTC DESIGN PRACTICES. NO CONSTRUCTION ACTIVITY WILL BE ALLOWED UNTIL THE CONTRACTOR'S TTC PLANS ARE APPROVED IN WRITING BY EOR AND COUNTY REPRESENTATIVE. SUBMITTED AND APPROVED PLANS SHALL BE PAID FOR UNDER MAINTENANCE OF TRAFFIC PAY ITEM NO. 102-1.
3. CONTRACTOR SHALL NOTIFY THE COUNTY REPRESENTATIVE A MINIMUM OF 5 WORKING DAYS PRIOR TO IMPLEMENTATION OF THE TTC.
4. PRIOR TO COMMENCING WORK, THE CONTRACTOR SHALL FURNISH, ERECT AND MAINTAIN ALL BARRICADES, WARNING SIGNS AND MARKINGS FOR HAZARDS AND THE CONTROL OF TRAFFIC, IN REASONABLE CONFORMITY WITH THE MUTCD, OR AS DIRECTED BY THE OWNER SUCH AS TO EFFECTIVELY PREVENT ACCIDENTS IN ALL PLACES WHERE THE WORK CAUSES OBSTRUCTION TO THE NORMAL TRAFFIC OR CONSTITUTES IN ANY WAY A HAZARD TO THE PUBLIC.
5. THE CONTRACTOR SHALL PROVIDE THE COUNTY WITH THE NAME OF THE PERSON ON THE CONTRACTOR'S STAFF DESIGNATED TO BE RESPONSIBLE FOR THE IMPLEMENTATION OF ALL PHASES OF TTC, PRIOR TO THE BEGINNING OF CONSTRUCTION.
6. ALL EXISTING PAVEMENT MARKINGS OUTSIDE THE LIMITS OF CONSTRUCTION WHICH ARE REMOVED FOR TTC PURPOSES SHALL BE REPLACED BEFORE COMPLETION OF THE PROJECT.
7. THE REFLECTIVE SHEETING ON SIGNS, CONES OR BARRICADES SCRATCHED OR DAMAGED TO THE POINT THAT REFLECTIVITY IS IMPAIRED SHALL BE REPLACED. DAMAGED, DEFACED OR DIRTY SIGNS, CONES OR BARRICADES SHALL IMMEDIATELY BE REPAIRED, REPLACED OR CLEANED BY THE CONTRACTOR.
8. THE CONTRACTOR SHALL BE RESPONSIBLE FOR PERFORMING FORMAL TTC INSPECTIONS AND SHALL IMMEDIATELY REPLACE ALL EQUIPMENT AND DEVICES NOT CONFORMING TO FDOT AND COUNTY STANDARDS. THESE INSPECTIONS SHALL TAKE PLACE AT LEAST ONCE A WEEK. SOME OF THESE INSPECTIONS SHALL BE CONDUCTED AT NIGHT. THE COUNTY SHALL BE ADVISED OF THE SCHEDULE OF THE INSPECTIONS AND BE GIVEN THE OPPORTUNITY TO JOIN IN THE INSPECTION.
9. SHORT TERM STOPPING OR PARKING OF A VEHICLE, OR PLACING ANYTHING ELSE NEXT TO THE WORK AREA (FOR EXAMPLE, A STACK OF CONES, PARKED CONSTRUCTION EQUIPMENT/VEHICLES, ETC.) CREATES A CHANNEL EFFECT WHICH CAN ADVERSELY AFFECT TRAFFIC FLOW. THEREFORE, ALL CONSTRUCTION EQUIPMENT SHALL BE PLACED A MINIMUM OF 15 FEET FROM THE TRAVEL LANE WHEN NOT IN USE. OVERNIGHT STORAGE WILL BE IN APPROPRIATELY SIGNED AND BARRICADED AREA AND PLACED OUTSIDE OF CLEAR ZONE.
10. TRAFFIC CONDITIONS, ACCIDENTS AND OTHER EMERGENCY CONDITIONS MAY REQUIRE THE COUNTY TO MODIFY ANY CHANNELIZATION SHOWN IN THESE PLANS. THE CONTRACTOR SHALL MAKE THE NECESSARY ADJUSTMENTS, AS DIRECTED BY THE COUNTY, WITHOUT DELAY.
11. WARNING LIGHTS SHALL BE USED TO MARK BARRICADES AS NEEDED.
12. THE CONTRACTOR SHALL RETURN THE GROUND TO ITS ORIGINAL CONDITION OR PROPOSED FINAL GRADE, WHEN REMOVING ANY TEMPORARY SURFACE.
13. DUST CONTROL MEASURES SHALL BE IMPLEMENTED ON ALL UNPAVED SURFACES UNTIL PAVED.
14. TEMPORARY PAVEMENT SHALL CONSIST OF 1" OF TYPE S-II ASPHALT ON 6" OF LIMEROCK.

SIGNING NOTES

1. THE CONTRACTOR SHALL INSURE THAT PERMANENT SIGNS DO NOT CONFLICT WITH TTC SIGNS. THE CONTRACTOR SHALL COVER ALL SIGNS, BOTH PERMANENT AND TEMPORARY, THAT CONFLICT WITH TRAFFIC CONTROL DURING CONSTRUCTION OPERATIONS.
2. THE EXISTING POSTED SPEED LIMIT SIGNS SHALL REMAIN THROUGHOUT ALL CONSTRUCTION STAGES, UNLESS OTHERWISE NOTED.
3. ANY EXISTING STREET AND ROAD NAME SIGNS THAT ARE IMPACTED BY CONSTRUCTION ARE TO BE TEMPORARILY RELOCATED AND KEPT VISIBLE AT ALL TIMES FOR THE FACILITATION OF ACCESS BY EMERGENCY VEHICLE TRAFFIC.
4. CONTRACTOR MUST MAINTAIN EXISTING SIGNING DURING CONSTRUCTION. IF SIGNS ARE DAMAGED DUE TO HIS ACTIVITY, THE CONTRACTOR IS REQUIRED TO REPLACE THEM PROMPTLY IN ACCORDANCE WITH CURRENT COUNTY OR FDOT STANDARD SPECIFICATIONS AT NO ADDITIONAL COST TO THE OWNER.
5. PROVIDE ADVANCE WARNING SIGNS PER FDOT INDEX 102-603, 102-604, 102-605, AND 102-612 AS APPLICABLE. FIELD LOCATE SINGING TO AVOID CONFLICTS WITH EXISTING SIGNS AND OTHER ROADSIDE OBSTRUCTIONS.
6. GROOVED PAVEMENT AHEAD SIGN IS REQUIRED 500 FEET IN ADVANCE OF A MILLED OR GROOVED SURFACE OPEN TO TRAFFIC. THE W8-15P PLACARD SHALL BE USED IN CONJUNCTION WITH THE GROOVED PAVEMENT AHEAD SIGN.

WORK ZONE SPECIAL NOTES

1. PAVEMENT MUST BE RESTORED TO AN ASPHALT BASE COURSE AS A MINIMUM BEFORE REOPENING ANY WORK ZONE TO TRAFFIC. REFER ALSO TO TTC GENERAL NOTE 13.
2. PROVIDE UNOBSTRUCTED ACCESS TO ALL DRIVEWAYS AND SIDE STREETS ADJACENT TO THE WORK ZONE AT ALL TIMES. TEMPORARY USE OF STEEL PLATES TO COVER EXCAVATION IS PERMITTED.
3. FOR WORK WITHIN THE TRAVELED WAY, REFER TO STANDARD PLAN INDEX 102-603 FOR TRAFFIC CONTROL. MAINTAIN A MINIMUM OF ONE 9-FOOT LANE DURING WORKING HOURS ALONG THE WORK ZONE.
4. FOR WORK WITHIN AND NEAR INTERSECTIONS, REFER TO STANDARD PLAN INDEX 102-604 AND 102-605. ALL INTERSECTION MOVEMENTS SHALL BE PROVIDED AT ALL TIMES.
5. FOR WORK ON THE SHOULDER AND ROADSIDE, REFER TO STANDARD PLAN INDEX 102-612.
6. SHORT DURATION INTERMITTENT ROADWAY CLOSURES TO INSTALL DRAINAGE CROSSINGS SHALL BE PERMITTED. CLOSURE TIME SHALL BE MINIMAL AND SHALL INCLUDE THE TIME NEEDED TO MAKE THE WORK ZONE SUITABLE FOR TRAFFIC QUEUE CLEARING. REFER TO STANDARD PLAN INDEX 102-625.
7. ALL DROP OFFS ALONG CONSTRUCTION WORK ZONES SHALL BE HANDLED PER STANDARD PLAN INDEX 102-600. NO VERTICAL DROP-OFFS GREATER THAN 1.5 INCHES SHALL BE LEFT EXPOSED AND UNMITIGATED DURING NON-WORKING HOURS. CHANNELIZING DEVICES SHALL REMAIN IN PLACE AT ALL TIMES TO DELINEATE MITIGATED VERTICAL DROP-OFFS GREATER THAN 3 INCHES ALONG THE WORK ZONE.
8. INSTALL APRONS PER STANDARD PLAN INDEX 102-600 TO MITIGATE FOR UNEVEN SURFACES ALONG THE TRAVELED WAY DURING NON-WORKING HOURS.
9. ADDITIONAL FLAGGERS MAY BE REQUIRED TO ENSURE DRIVEWAY ACCESSIBILITY DURING MILLING AND PAVING OPERATIONS.
10. PEDESTRIANS SHALL BE ESCORTED BY FLAGGERS THROUGH THE WORK ZONE.
11. TRENCHING, SHORING, AND BACKFILLING FOR DRAINAGE INSTALLATION SHALL BE PER MONROE COUNTY STANDARD SPECIFICATION SECTION 80.
12. CONTRACTOR SHALL IDENTIFY STAGING AREAS ALONG THE PROJECT SITE AND SUBMIT FOR APPROVAL TO THE COUNTY REPRESENTATIVE AND EOR PRIOR TO MOBILIZATION OF EACH PHASE OF THE PROJECT. PROPOSED STAGING AREAS NEED TO BE PERMITTED THROUGH BUILDING DEPT./ENVIRONMENTAL RESOURCES.
13. ANY ROAD CLOSURES TO BE COORDINATED WITH THE COUNTY.

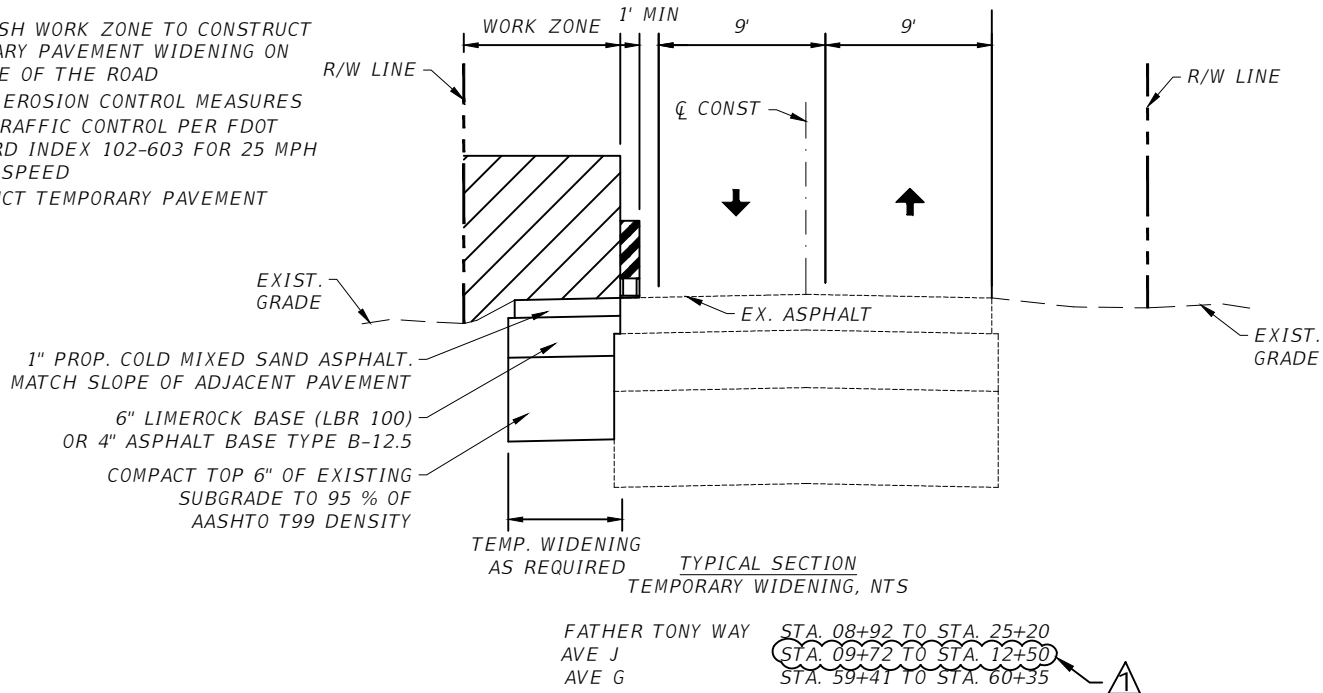
REQUIREMENTS

1. PROJECT WORK HOURS ARE BETWEEN 7:00 AM AND 7:00 PM MONDAY THROUGH FRIDAY. NO WORK IS ALLOWED ON WEEKENDS, UNLESS AUTHORIZED BY THE COUNTY, WITH A WRITTEN REQUEST, SUBMITTED BY THE CONTRACTOR 72 HOURS PRIOR TO COMMENCEMENT OF WORK. NO WORK IS ALLOWED ON: THANKSGIVING DAY, CHRISTMAS DAY AND NEW YEARS DAY.
2. ACCESS FOR LOCAL TRAFFIC WITH DESTINATIONS WITHIN THE WORK ZONES SHALL BE MAINTAINED.
3. ALL ROAD CLOSED SIGNS SHALL BE MOUNTED ON TYPE III BARRICADES.
4. RESTORE ALL SWALES DRIVEWAYS AND SIDEWALKS IMPACTED BY CONSTRUCTION TO THEIR ORIGINAL CONDITION OR BETTER.
5. DURING NON-WORKING HOURS, ROADWAY SHALL BE RESTORED TO MINIMUM TWO LANE TWO-WAY ROADWAY. LENGTH OF ACTIVE WORK ZONE SHALL CONSIDER THE ABILITY TO RESTORE THE EXISTING LANE CONFIGURATION AT THE END OF EACH WORK PERIOD.

R E V I S I O N S				WSP		SEA LEVEL RISE ROADWAY AND DRAINAGE PILOT PROJECT SANDS SUBDIVISION - BIG PINE KEY MONROE COUNTY - DEPARTMENT OF ENGINEERING	SHEET NO.
DATE	DESCRIPTION	DATE	DESCRIPTION				TC-1B
03/01/23 03/13/23	1. BID ADDENDUM 3 2. BID ADDENDUM 5						

PRE-STAGE 1 CONSTRUCTION STAGING NOTES

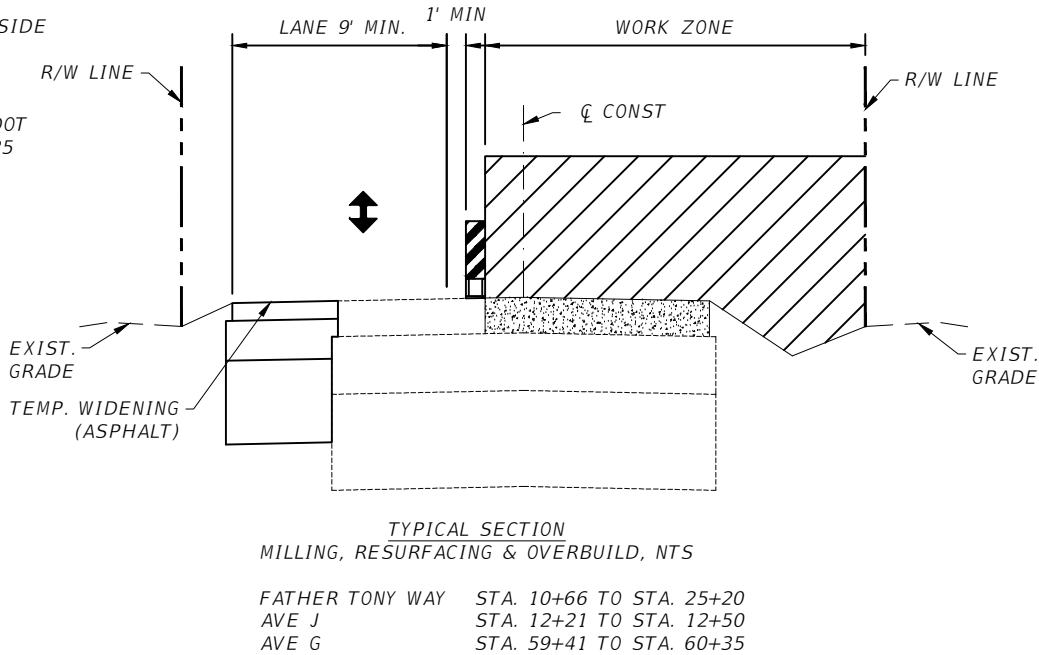
1. ESTABLISH WORK ZONE TO CONSTRUCT TEMPORARY PAVEMENT WIDENING ON ONE SIDE OF THE ROAD
2. INSTALL EROSION CONTROL MEASURES
3. SETUP TRAFFIC CONTROL PER FDOT STANDARD INDEX 102-603 FOR 25 MPH POSTED SPEED
4. CONSTRUCT TEMPORARY PAVEMENT



STAGE 1A

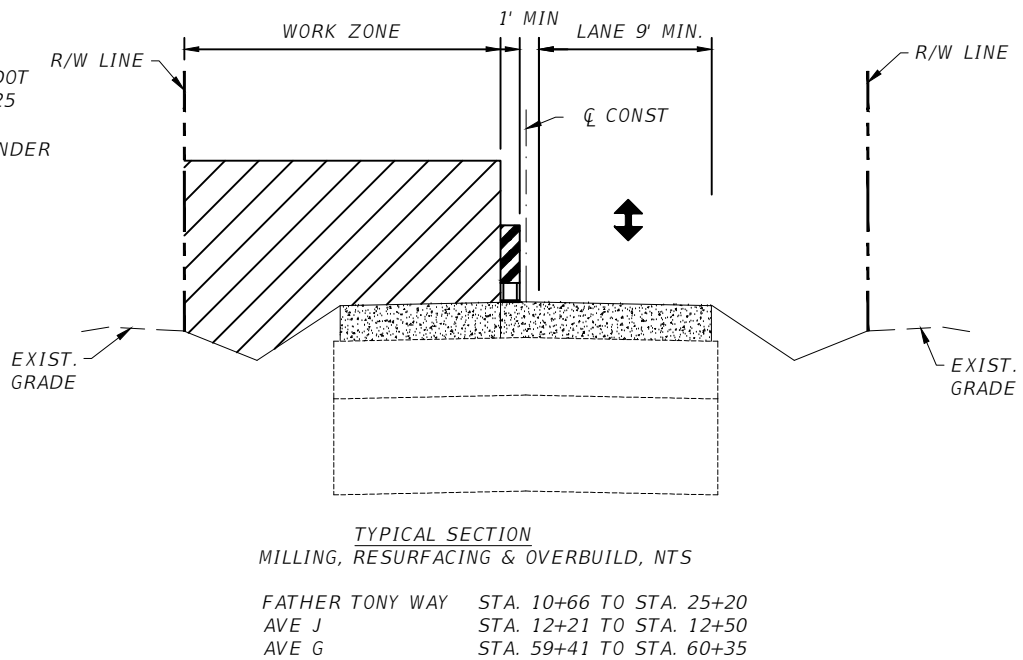
STAGE 1A CONSTRUCTION STAGING NOTES

1. ESTABLISH WORK ZONE ON ONE SIDE OF THE ROADWAY
2. INSTALL EROSION CONTROL MEASURES
3. SETUP TRAFFIC CONTROL PER FDOT STANDARD INDEX 102-603 FOR 25 MPH POSTED SPEED
4. CONSTRUCT DRAINAGE SYSTEM
5. MILL AND RESURFACE MINIMUM WIDTH OF 12 FEET OF ROADWAY
6. REOPEN TO TRAFFIC



STAGE 1B CONSTRUCTION STAGING NOTES

1. ESTABLISH WORK ZONE ON THE OTHER SIDE OF THE ROADWAY
2. SETUP TRAFFIC CONTROL PER FDOT STANDARD INDEX 102-603 FOR 25 MPH POSTED SPEED
3. MILL AND RESURFACE THE REMINDER OF THE PROPOSED ROADWAY
4. CONSTRUCT DRAINAGE SYSTEM
5. REOPEN TO TRAFFIC



REVISIONS			
DATE	DESCRIPTION	DATE	DESCRIPTION
03/13/23	1. BID ADDENDUM #5		



SEA LEVEL RISE ROADWAY AND DRAINAGE PILOT PROJECT
SANDS SUBDIVISION - BIG PINE KEY
MONROE COUNTY - DEPARTMENT OF ENGINEERING

TEMPORARY TRAFFIC CONTROL -
CONSTRUCTION STAGING NOTES

SHEET NO.
TC-2B